

Datasheet for ABIN7266456

**anti-COL1A2 antibody**[Go to Product page](#)**2** Images

## Overview

Quantity:	100 µL
Target:	COL1A2
Reactivity:	Human
Host:	Rabbit
Clonality:	Monoclonal
Conjugate:	This COL1A2 antibody is un-conjugated
Application:	Western Blotting (WB)

## Product Details

Purpose:	Collagen I/COL1A2 Rabbit mAb
Immunogen:	Recombinant protein of human Collagen I/COL1A2.
Isotype:	IgG
Cross-Reactivity:	Mouse, Rat
Characteristics:	Monoclonal Antibodies
Purification:	Affinity purification

## Target Details

Target:	COL1A2
Alternative Name:	COL1A2 ( <a href="#">COL1A2 Products</a> )
Background:	This gene encodes the pro-alpha2 chain of type I collagen whose triple helix comprises two

## Target Details

alpha1 chains and one alpha2 chain. Type I is a fibril-forming collagen found in most connective tissues and is abundant in bone, cornea, dermis and tendon. Mutations in this gene are associated with osteogenesis imperfecta types I-IV, Ehlers-Danlos syndrome type VIIB, recessive Ehlers-Danlos syndrome Classical type, idiopathic osteoporosis, and atypical Marfan syndrome. Symptoms associated with mutations in this gene, however, tend to be less severe than mutations in the gene for the alpha1 chain of type I collagen (COL1A1) reflecting the different role of alpha2 chains in matrix integrity. Three transcripts, resulting from the use of alternate polyadenylation signals, have been identified for this gene.,COL1A2,OI4,Signal Transduction,Cell Biology & Developmental Biology,Cytoskeleton,Extracellular Matrix,Collagen,Growth factor,Stem Cells,Mesenchymal Stem Cells,COL1A2

Molecular Weight: 129kDa

Gene ID: 1278

UniProt: [P08123](#)

## Application Details

Application Notes: WB,1:500 - 1:2000

Restrictions: For Research Use only

## Handling

Format: Liquid

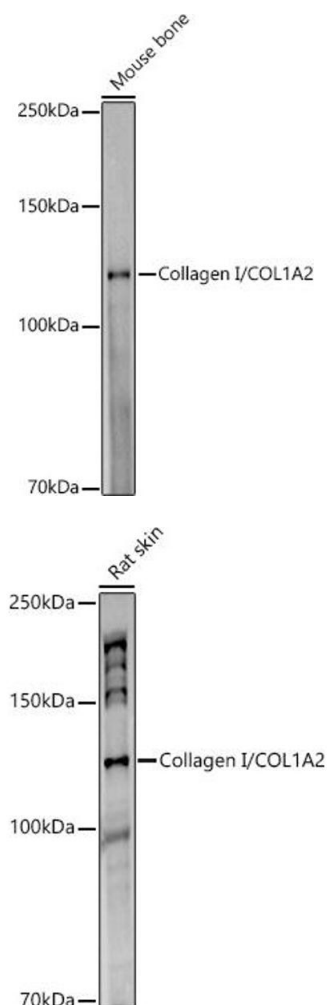
Buffer: PBS with 0.02 % sodium azide,50 % glycerol, pH 7.3.

Preservative: Sodium azide

Precaution of Use: This product contains Sodium azide: a POISONOUS AND HAZARDOUS SUBSTANCE which should be handled by trained staff only.

Storage: -20 °C

Storage Comment: Store at -20°C. Avoid freeze / thaw cycles.



### Western Blotting

**Image 1.** Western blot analysis of extracts of Mouse bone, using Collagen I/COL1 antibody (1059) at 1:1000 dilution. Secondary antibody: HRP Goat Anti-Rabbit IgG (H+L) (ABIN1684268 and ABIN3020597) at 1:10000 dilution. Lysates/proteins: 25 µg per lane. Blocking buffer: 3 % nonfat dry milk in TBST. Detection: ECL Basic Kit (RM00020). Exposure time: 180s.

### Western Blotting

**Image 2.** Western blot analysis of extracts of Rat skin, using Collagen I/COL1 antibody (1059) at 1:1000 dilution. Secondary antibody: HRP Goat Anti-Rabbit IgG (H+L) (ABIN1684268 and ABIN3020597) at 1:10000 dilution. Lysates/proteins: 25 µg per lane. Blocking buffer: 3 % nonfat dry milk in TBST. Detection: ECL Enhanced Kit (RM00021). Exposure time: 180s.