

Datasheet for ABIN7266462

**anti-COL6A1 antibody**

3 Images

[Go to Product page](#)

## Overview

Quantity:	100 µL
Target:	COL6A1
Reactivity:	Human
Host:	Rabbit
Clonality:	Monoclonal
Conjugate:	This COL6A1 antibody is un-conjugated
Application:	Western Blotting (WB), Immunohistochemistry (IHC)

## Product Details

Purpose:	Collagen VI/COL6A1 Rabbit mAb
Immunogen:	A synthesized peptide derived from human Collagen VI/COL6A1
Isotype:	IgG
Cross-Reactivity:	Human, Mouse, Rat
Characteristics:	Monoclonal Antibodies
Purification:	Affinity purification

## Target Details

Target:	COL6A1
Alternative Name:	COL6A1 ( <a href="#">COL6A1 Products</a> )
Background:	The collagens are a superfamily of proteins that play a role in maintaining the integrity of

## Target Details

various tissues. Collagens are extracellular matrix proteins and have a triple-helical domain as their common structural element. Collagen VI is a major structural component of microfibrils. The basic structural unit of collagen VI is a heterotrimer of the alpha1(VI), alpha2(VI), and alpha3(VI) chains. The alpha2(VI) and alpha3(VI) chains are encoded by the COL6A2 and COL6A3 genes, respectively. The protein encoded by this gene is the alpha 1 subunit of type VI collagen (alpha1(VI) chain). Mutations in the genes that code for the collagen VI subunits result in the autosomal dominant disorder, Bethlem myopathy. [provided by RefSeq, Jul 2008],BTHLM1, OPLL, UCHMD1,Cell Biology & Developmental Biology,Cytoskeleton,Extracellular Matrix,Extracellular Matrix\_Collagen,Signal Transduction,COL6A1

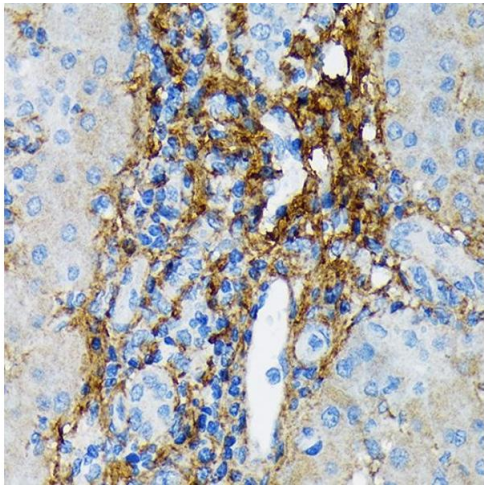
Molecular Weight:	147kDa
Gene ID:	1291
UniProt:	<a href="#">P12109</a>
Pathways:	<a href="#">Growth Factor Binding</a> , <a href="#">SARS-CoV-2 Protein Interactome</a>

## Application Details

Application Notes:	WB,1:500 - 1:2000,IHC,1:50 - 1:200
Restrictions:	For Research Use only

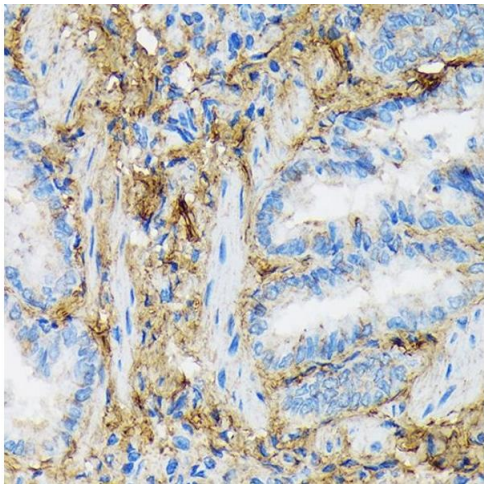
## Handling

Format:	Liquid
Buffer:	PBS with 0.02 % sodium azide,0.05 % BSA,50 % glycerol, pH 7.3.
Preservative:	Sodium azide
Precaution of Use:	This product contains Sodium azide: a POISONOUS AND HAZARDOUS SUBSTANCE which should be handled by trained staff only.
Storage:	-20 °C
Storage Comment:	Store at -20°C. Avoid freeze / thaw cycles.



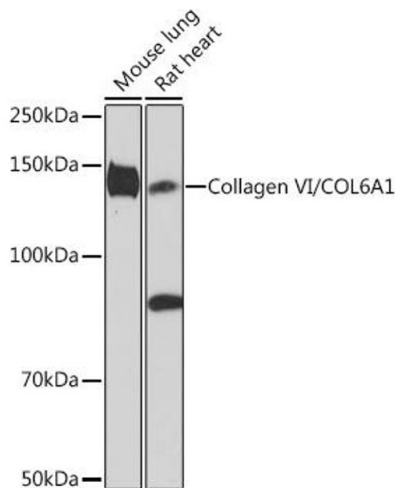
### Immunohistochemistry

**Image 1.** Immunohistochemistry of paraffin-embedded human liver using Collagen VI/COL6 Rabbit mAb (ABIN7266462) at dilution of 1:100 (40x lens). Perform microwave antigen retrieval with 10 mM Tris/EDTA buffer pH 9.0 before commencing with IHC staining protocol.



### Immunohistochemistry

**Image 2.** Immunohistochemistry of paraffin-embedded rat lung using Collagen VI/COL6 Rabbit mAb (ABIN7266462) at dilution of 1:100 (40x lens). Perform microwave antigen retrieval with 10 mM Tris/EDTA buffer pH 9.0 before commencing with IHC staining protocol.



### Western Blotting

**Image 3.** Western blot analysis of extracts of various cell lines, using Collagen VI/COL6 Rabbit mAb (ABIN7266462) at 1:1000 dilution. Secondary antibody: HRP Goat Anti-Rabbit IgG (H+L) (ABIN1684268 and ABIN3020597) at 1:10000 dilution. Lysates/proteins: 25 µg per lane. Blocking buffer: 3 % nonfat dry milk in TBST. Detection: ECL Enhanced Kit (RM00021). Exposure time: 3 min.