

Datasheet for ABIN7266466
anti-COL16A1 antibody (AA 1000-1100)[Go to Product page](#)

2 Images

Overview

Quantity:	100 µL
Target:	COL16A1
Binding Specificity:	AA 1000-1100
Reactivity:	Human
Host:	Rabbit
Clonality:	Polyclonal
Conjugate:	This COL16A1 antibody is un-conjugated
Application:	Western Blotting (WB)

Product Details

Purpose:	COL16A1 Rabbit pAb
Immunogen:	A synthetic peptide corresponding to a sequence within amino acids 1000-1100 of human COL16A1 (NP_001847.3).
Isotype:	IgG
Cross-Reactivity:	Human, Mouse, Rat
Characteristics:	Polyclonal Antibodies
Purification:	Affinity purification

Target Details

Target:	COL16A1
---------	---------

Target Details

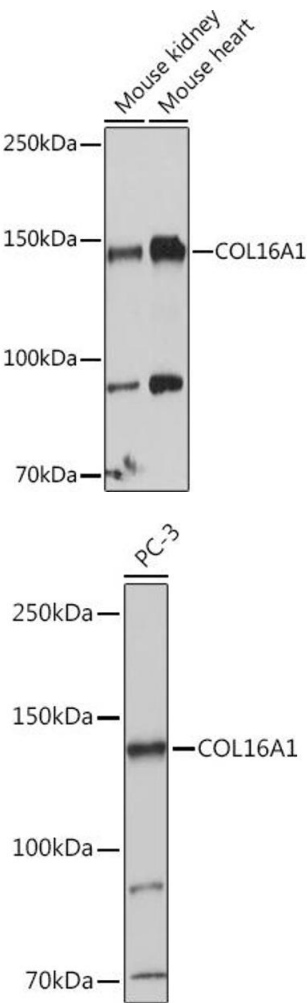
Alternative Name:	COL16A1 (COL16A1 Products)
Background:	This gene encodes the alpha chain of type XVI collagen, a member of the FACIT collagen family (fibril-associated collagens with interrupted helices). Members of this collagen family are found in association with fibril-forming collagens such as type I and II, and serve to maintain the integrity of the extracellular matrix. High levels of type XVI collagen have been found in fibroblasts and keratinocytes, and in smooth muscle and amnion.,COL16A1, 447AA, FP1572, collagen alpha-1(XVI) chain,COL16A1
Molecular Weight:	157kDa
Gene ID:	1307
UniProt:	Q07092

Application Details

Application Notes:	WB,1:500 - 1:2000
Restrictions:	For Research Use only

Handling

Format:	Liquid
Buffer:	PBS with 0.02 % sodium azide,50 % glycerol, pH 7.3.
Preservative:	Sodium azide
Precaution of Use:	This product contains Sodium azide: a POISONOUS AND HAZARDOUS SUBSTANCE which should be handled by trained staff only.
Storage:	-20 °C
Storage Comment:	Store at -20°C. Avoid freeze / thaw cycles.



Western Blotting

Image 1. Western blot analysis of extracts of various cell lines, using COL16 antibody (8837) at 1:1000 dilution. Secondary antibody: HRP Goat Anti-Rabbit IgG (H+L) (ABIN1684268 and ABIN3020597) at 1:10000 dilution. Lysates/proteins: 25 µg per lane. Blocking buffer: 3 % nonfat dry milk in TBST. Detection: ECL Basic Kit (RM00020). Exposure time: 10s.

Western Blotting

Image 2. Western blot analysis of extracts of PC-3 cells, using COL16 antibody (8837) at 1:1000 dilution. Secondary antibody: HRP Goat Anti-Rabbit IgG (H+L) (ABIN1684268 and ABIN3020597) at 1:10000 dilution. Lysates/proteins: 25 µg per lane. Blocking buffer: 3 % nonfat dry milk in TBST. Detection: ECL Basic Kit (RM00020). Exposure time: 1s.