

Datasheet for ABIN7266475
anti-C1QC antibody (AA 50-150)



[Go to Product page](#)

5 Images

Overview

Quantity:	100 µL
Target:	C1QC
Binding Specificity:	AA 50-150
Reactivity:	Human
Host:	Rabbit
Clonality:	Polyclonal
Conjugate:	This C1QC antibody is un-conjugated
Application:	Western Blotting (WB), Immunohistochemistry (IHC)

Product Details

Purpose:	C1QC Rabbit pAb
Immunogen:	A synthetic peptide corresponding to a sequence within amino acids 50-150 of human C1QC (NP_001107573.1).
Sequence:	YDGLPGPKGE PGIPAIPGIR GPKGQKGEPG LPGHPGKNGP MGPPGMPPGVP GPMGIPGEPG EEGRYKQKFQ SVFTVTRQTH QPPAPNSLIR FNAVLTPQD
Isotype:	IgG
Cross-Reactivity:	Human
Characteristics:	Polyclonal Antibodies
Purification:	Affinity purification

Target Details

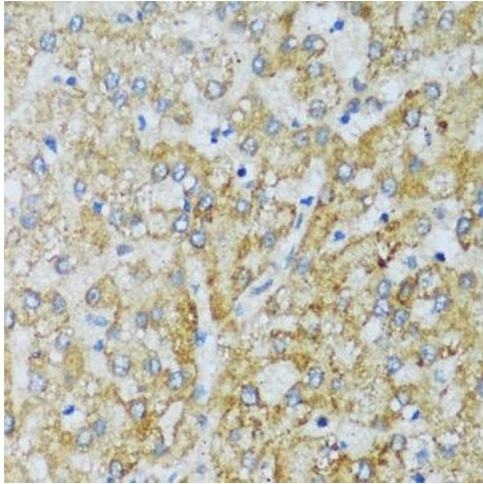
Target:	C1QC
Alternative Name:	C1QC (C1QC Products)
Background:	<p>This gene encodes a major constituent of the human complement subcomponent C1q. C1q associates with C1r and C1s in order to yield the first component of the serum complement system. A deficiency in C1q has been associated with lupus erythematosus and glomerulonephritis. C1q is composed of 18 polypeptide chains: six A-chains, six B-chains, and six C-chains. Each chain contains a collagen-like region located near the N-terminus, and a C-terminal globular region. The A-, B-, and C-chains are arranged in the order A-C-B on chromosome 1. This gene encodes the C-chain polypeptide of human complement subcomponent C1q. Alternatively spliced transcript variants that encode the same protein have been found for this gene.,C1QC,C1Q-C,C1QG,Immunology & Inflammation,Cell Intrinsic Innate Immunity Signaling Pathway,Neuroscience,Neurodegenerative Diseases,C1QC</p>
Molecular Weight:	25kDa
Gene ID:	714
UniProt:	P02747
Pathways:	Complement System

Application Details

Application Notes:	WB,1:500 - 1:2000,IHC,1:50 - 1:100
Restrictions:	For Research Use only

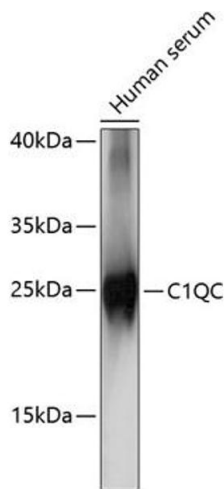
Handling

Format:	Liquid
Buffer:	PBS with 0.02 % sodium azide,50 % glycerol, pH 7.3.
Preservative:	Sodium azide
Precaution of Use:	This product contains Sodium azide: a POISONOUS AND HAZARDOUS SUBSTANCE which should be handled by trained staff only.
Storage:	-20 °C
Storage Comment:	Store at -20°C. Avoid freeze / thaw cycles.



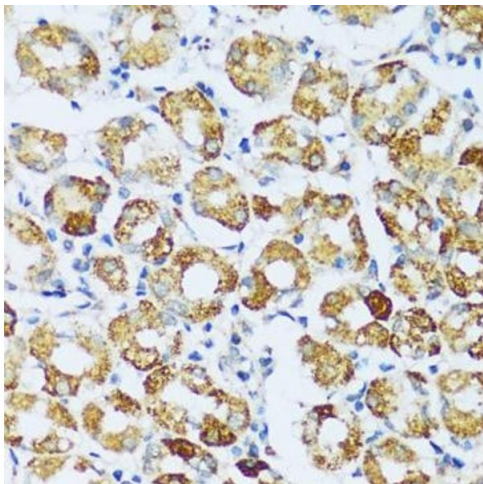
Immunohistochemistry

Image 1. Immunohistochemistry of paraffin-embedded human liver using C1QC antibody (ABIN7266475) at dilution of 1:100 (40x lens). Perform microwave antigen retrieval with 10 mM PBS buffer pH 7.2 before commencing with IHC staining protocol.



Western Blotting

Image 2. Western blot analysis of extracts of human serum, using C1QC antibody (ABIN7266475) at 1:1000 dilution. Secondary antibody: HRP Goat Anti-Rabbit IgG (H+L) (ABIN1684268 and ABIN3020597) at 1:10000 dilution. Lysates/proteins: 25 µg per lane. Blocking buffer: 3 % nonfat dry milk in TBST. Detection: ECL Basic Kit (RM00020). Exposure time: 5s.



Immunohistochemistry

Image 3. Immunohistochemistry of paraffin-embedded human stomach using C1QC antibody (ABIN7266475) at dilution of 1:100 (40x lens). Perform microwave antigen retrieval with 10 mM PBS buffer pH 7.2 before commencing with IHC staining protocol.

Please check the [product details page](#) for more images. Overall 5 images are available for ABIN7266475.