



[Go to Product page](#)

Datasheet for ABIN7266481

anti-C4A antibody

2 Images

Overview

| | |
|--------------|--|
| Quantity: | 100 µL |
| Target: | C4A (C4a) |
| Reactivity: | Human |
| Host: | Rabbit |
| Clonality: | Monoclonal |
| Conjugate: | This C4A antibody is un-conjugated |
| Application: | Western Blotting (WB), Immunofluorescence (IF) |

Product Details

| | |
|-------------------|---|
| Purpose: | Complement C4A Rabbit mAb |
| Immunogen: | A synthesized peptide derived from human Complement C4A |
| Isotype: | IgG |
| Cross-Reactivity: | Human |
| Characteristics: | Monoclonal Antibodies |
| Purification: | Affinity purification |

Target Details

| | |
|-------------------|--|
| Target: | C4A (C4a) |
| Alternative Name: | C4A (C4a Products) |
| Background: | This gene encodes the acidic form of complement factor 4, part of the classical activation |

Target Details

pathway. The protein is expressed as a single chain precursor which is proteolytically cleaved into a trimer of alpha, beta, and gamma chains prior to secretion. The trimer provides a surface for interaction between the antigen-antibody complex and other complement components. The alpha chain is cleaved to release C4 anaphylatoxin, an antimicrobial peptide and a mediator of local inflammation. Deficiency of this protein is associated with systemic lupus erythematosus and type I diabetes mellitus. This gene localizes to the major histocompatibility complex (MHC) class III region on chromosome 6. Varying haplotypes of this gene cluster exist, such that individuals may have 1, 2, or 3 copies of this gene. Two transcript variants encoding different isoforms have been found for this gene. [provided by RefSeq, Nov 2014],C4, C4A2, C4A3, C4A4, C4A6, C4AD, C4S, CO4, CPAMD2, RG,Cell Intrinsic Innate Immunity Signaling Pathway,Immunology & Inflammation,C4A

Molecular Weight: 193kDa

Gene ID: 720

UniProt: [P0C0L4](#)

Pathways: [Complement System](#)

Application Details

Application Notes: WB,1:500 - 1:2000,IF,1:50 - 1:200

Restrictions: For Research Use only

Handling

Format: Liquid

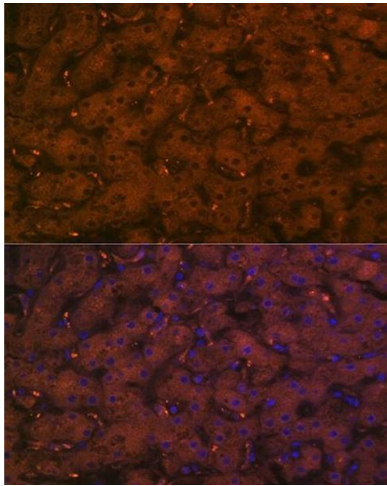
Buffer: PBS with 0.02 % sodium azide,0.05 % BSA,50 % glycerol, pH 7.3.

Preservative: Sodium azide

Precaution of Use: This product contains Sodium azide: a POISONOUS AND HAZARDOUS SUBSTANCE which should be handled by trained staff only.

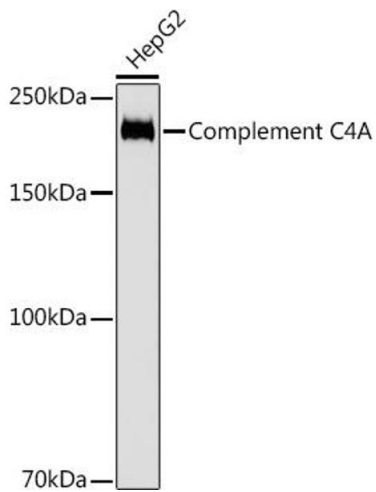
Storage: -20 °C

Storage Comment: Store at -20°C. Avoid freeze / thaw cycles.



Immunofluorescence

Image 1. Immunofluorescence analysis of human liver using Complement C4A Rabbit mAb (ABIN7266481) at dilution of 1:100 (40x lens). Blue: DAPI for nuclear staining.



Western Blotting

Image 2. Western blot analysis of extracts of HepG2 cells, using Complement C4A antibody (ABIN7266481) at 1:1000 dilution. Secondary antibody: HRP Goat Anti-Rabbit IgG (H+L) (ABIN1684268 and ABIN3020597) at 1:10000 dilution. Lysates/proteins: 25 µg per lane. Blocking buffer: 3 % nonfat dry milk in TBST. Detection: ECL Basic Kit (RM00020). Exposure time: 3s.