



[Go to Product page](#)

Datasheet for ABIN7266482
anti-C4A antibody (AA 1200-1446)

1 Image

Overview

Quantity:	100 µL
Target:	C4A (C4a)
Binding Specificity:	AA 1200-1446
Reactivity:	Human
Host:	Rabbit
Clonality:	Polyclonal
Conjugate:	This C4A antibody is un-conjugated
Application:	Western Blotting (WB)

Product Details

Purpose:	Complement C4A Rabbit pAb
Immunogen:	Recombinant fusion protein containing a sequence corresponding to amino acids 1200-1446 of human Complement C4A (NP_009224.2).
Sequence:	LTLTKAPVDL LGVAHNNLMA MAQETGDNLY WGSVTGSQSN AVSPTPAPRN PSDPMPQAPA LWIETTAYAL LHLLLHEGKA EMADQASAWL TRQGSFQGGF RSTQDTVIAL DALSAYWIAS HTTEERGLNV TLSSTGRNGF KSHALQLNNR QIRGLEEELQ FSLGSKINVK VGGNSKGTLLK VLRTYNVLDM KNTTCQDLQI ETVKKGHVEY TMEANEDYED YEYDELPAKD DPDAPLQPVT PLQLFEG
Isotype:	IgG
Cross-Reactivity:	Human
Characteristics:	Polyclonal Antibodies

Product Details

Purification: Affinity purification

Target Details

Target: C4A (C4a)

Alternative Name: C4A ([C4a Products](#))

Background: This gene encodes the acidic form of complement factor 4, part of the classical activation pathway. The protein is expressed as a single chain precursor which is proteolytically cleaved into a trimer of alpha, beta, and gamma chains prior to secretion. The trimer provides a surface for interaction between the antigen-antibody complex and other complement components. The alpha chain is cleaved to release C4 anaphylatoxin, an antimicrobial peptide and a mediator of local inflammation. Deficiency of this protein is associated with systemic lupus erythematosus and type I diabetes mellitus. This gene localizes to the major histocompatibility complex (MHC) class III region on chromosome 6. Varying haplotypes of this gene cluster exist, such that individuals may have 1, 2, or 3 copies of this gene. Two transcript variants encoding different isoforms have been found for this gene.,C4A,C4,C4A2,C4A3,C4A4,C4A6,C4AD,C4S,CO4,CPAMD2,RG,Immunology & Inflammation,Cell Intrinsic Innate Immunity Signaling Pathway,C4A

Molecular Weight: 187kDa/192kDa

Gene ID: 720

UniProt: [P0C0L4](#)

Pathways: [Complement System](#)

Application Details

Application Notes: WB,1:500 - 1:2000

Restrictions: For Research Use only

Handling

Format: Liquid

Buffer: PBS with 0.02 % sodium azide,50 % glycerol, pH 7.3.

Preservative: Sodium azide

Precaution of Use: This product contains Sodium azide: a POISONOUS AND HAZARDOUS SUBSTANCE which

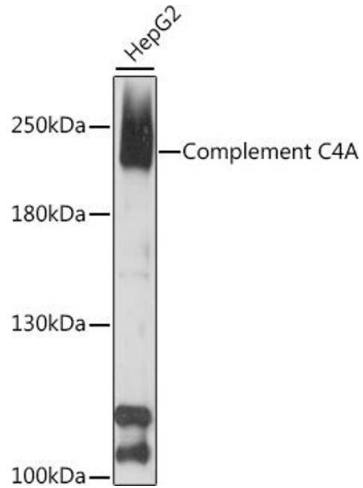
Handling

should be handled by trained staff only.

Storage: -20 °C

Storage Comment: Store at -20°C. Avoid freeze / thaw cycles.

Images



Western Blotting

Image 1. Western blot analysis of extracts of HepG2 cells, using Complement C4A antibody (ABIN7266482) at 1:1000 dilution. Secondary antibody: HRP Goat Anti-Rabbit IgG (H+L) (ABIN1684268 and ABIN3020597) at 1:10000 dilution. Lysates/proteins: 25 µg per lane. Blocking buffer: 3 % nonfat dry milk in TBST. Detection: ECL Basic Kit (RM00020). Exposure time: 90s.