



[Go to Product page](#)

Datasheet for ABIN7266500

anti-Copine III antibody (AA 238-537)

1 Image

Overview

Quantity:	100 µL
Target:	Copine III (CPNE3)
Binding Specificity:	AA 238-537
Reactivity:	Human
Host:	Rabbit
Clonality:	Polyclonal
Conjugate:	This Copine III antibody is un-conjugated
Application:	Western Blotting (WB)

Product Details

Purpose:	CPNE3 Rabbit pAb
Immunogen:	Recombinant fusion protein containing a sequence corresponding to amino acids 238-537 of human CPNE3 (NP_003900.1).
Sequence:	EASRSPVEF ECINEKKRQK KKSYPKNSGVI SVKQCEITVE CTFLDYIMGG CQLNFTVGVD FTGSNGDPRS PDSLHYISPN GVNEYLTALW SVGLVIQDYD ADKMFPAGFG GAQIPPQWQV SHEFPMNFNP SNPYCNGIQG IVEAYRSLCP QIKLYGPTNF SPIINHVARF AAAATQQQTA SQYFVLLIIT DGVITDLDLDT RQAIIVNASRL PMSIIVGVG GADFSAMEFL DGDGGSRLRSP LGEVAIRDIV QFVPPFRQFQN APKEALAQCV LAEIPQVVG YFNTYKLLPP KNPATKQQKQ
Isotype:	IgG
Cross-Reactivity:	Human, Mouse
Characteristics:	Polyclonal Antibodies

Product Details

Purification: Affinity purification

Target Details

Target: Copine III (CPNE3)

Alternative Name: CPNE3 ([CPNE3 Products](#))

Background: Calcium-dependent membrane-binding proteins may regulate molecular events at the interface of the cell membrane and cytoplasm. This gene encodes a protein which contains two type II C2 domains in the amino-terminus and an A domain-like sequence in the carboxy-terminus. The A domain mediates interactions between integrins and extracellular ligands.,CPNE3,CPN3,PRO1071,copine-3,Epigenetics & Nuclear Signaling,RNA Binding,Signal Transduction,CPNE3

Molecular Weight: 60kDa

Gene ID: 8895

UniProt: [075131](#)

Application Details

Application Notes: WB,1:500 - 1:2000

Restrictions: For Research Use only

Handling

Format: Liquid

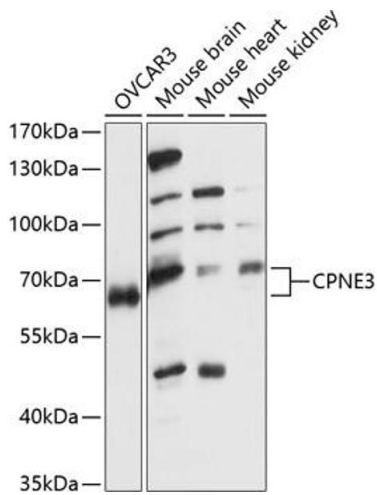
Buffer: PBS with 0.02 % sodium azide,50 % glycerol, pH 7.3.

Preservative: Sodium azide

Precaution of Use: This product contains Sodium azide: a POISONOUS AND HAZARDOUS SUBSTANCE which should be handled by trained staff only.

Storage: -20 °C

Storage Comment: Store at -20°C. Avoid freeze / thaw cycles.



Western Blotting

Image 1. Western blot analysis of extracts of various cell lines, using CPNE3 antibody (ABIN7266500) at 1:1000 dilution. Secondary antibody: HRP Goat Anti-Rabbit IgG (H+L) (ABIN1684268 and ABIN3020597) at 1:10000 dilution. Lysates/proteins: 25 µg per lane. Blocking buffer: 3 % nonfat dry milk in TBST. Detection: ECL Basic Kit (RM00020). Exposure time: 60s.