



Datasheet for ABIN7266512  
**anti-Cortactin antibody (AA 1-200)**



[Go to Product page](#)

3 Images

Overview

Quantity:	100 µL
Target:	Cortactin (CTTN)
Binding Specificity:	AA 1-200
Reactivity:	Human
Host:	Rabbit
Clonality:	Polyclonal
Conjugate:	This Cortactin antibody is un-conjugated
Application:	Western Blotting (WB), Immunohistochemistry (IHC), Immunofluorescence (IF)

Product Details

Purpose:	Cortactin Rabbit pAb
Immunogen:	Recombinant fusion protein containing a sequence corresponding to amino acids 1-200 of human Cortactin (NP_612632.1).
Sequence:	MWKASAGHAV SIAQDDAGAD DWETDPDFVN DVSEKEQRWG AKTVQGSGHQ EHINIHKLRE NVFQEHQTLK EKELETGPKA SHGYGGKFGV EQDRMDKSAV GHEYQSKLSK HCSQVDSVRG FGGKFGVQMD RVDQSAVGFE YQGKTEKHAS QKDYSSGFGG KYGVQADRVD KSAVGFDYQG KTEKHESQRD YSKGFGGKYG
Isotype:	IgG
Cross-Reactivity:	Human, Mouse, Rat
Characteristics:	Polyclonal Antibodies

## Product Details

---

Purification: Affinity purification

## Target Details

---

Target: Cortactin (CTTN)

Alternative Name: CTTN ([CTTN Products](#))

Background: This gene is overexpressed in breast cancer and squamous cell carcinomas of the head and neck. The encoded protein is localized in the cytoplasm and in areas of the cell-substratum contacts. This gene has two roles: (1) regulating the interactions between components of adherens-type junctions and (2) organizing the cytoskeleton and cell adhesion structures of epithelia and carcinoma cells. During apoptosis, the encoded protein is degraded in a caspase-dependent manner. The aberrant regulation of this gene contributes to tumor cell invasion and metastasis. Three splice variants that encode different isoforms have been identified for this gene.,CTTN,EMS1,cortactin,Cancer,Signal Transduction,Cell Biology & Developmental Biology,Cell Cycle,Cell Adhesion,Cytoskeleton,Microfilaments,Actins,CTTN

Molecular Weight: 57kDa/61kDa/70kDa

Gene ID: 2017

UniProt: [Q14247](#)

Pathways: [MAPK Signaling](#)

## Application Details

---

Application Notes: WB,1:500 - 1:2000,IHC,1:50 - 1:100,IF,1:50 - 1:100

Restrictions: For Research Use only

## Handling

---

Format: Liquid

Buffer: PBS with 0.02 % sodium azide,50 % glycerol, pH 7.3.

Preservative: Sodium azide

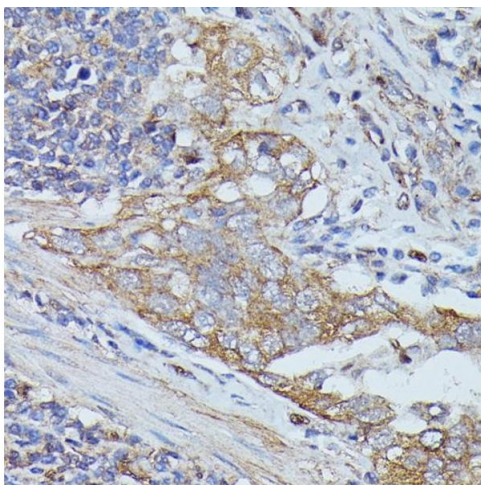
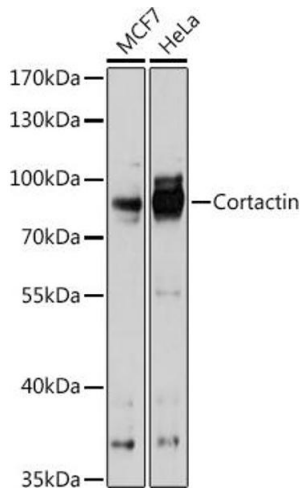
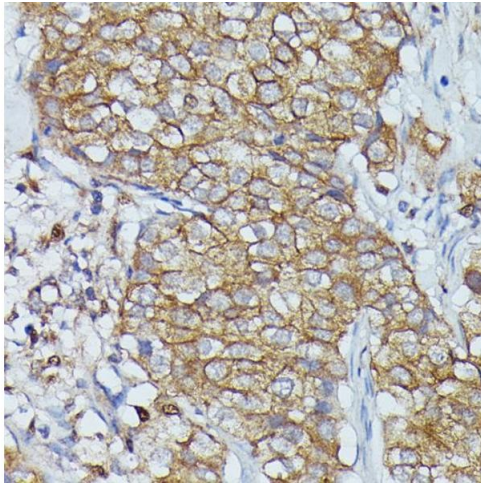
Precaution of Use: This product contains Sodium azide: a POISONOUS AND HAZARDOUS SUBSTANCE which should be handled by trained staff only.

Storage: -20 °C

## Handling

Storage Comment: Store at -20°C. Avoid freeze / thaw cycles.

## Images



### Immunohistochemistry

**Image 1.** Immunohistochemistry of paraffin-embedded human mammary cancer using Cortactin antibody at dilution of 1:100 (40x lens). Perform microwave antigen retrieval with 10 mM PBS buffer pH 7.2 before commencing with IHC staining protocol.

### Western Blotting

**Image 2.** Western blot analysis of extracts of various cell lines, using Cortactin antibody at 1:1000 dilution. Secondary antibody: HRP Goat Anti-Rabbit IgG (H+L) (ABIN1684268 and ABIN3020597) at 1:10000 dilution. Lysates/proteins: 25 µg per lane. Blocking buffer: 3% nonfat dry milk in TBST. Detection: ECL Basic Kit (RM00020). Exposure time: 60s.

### Immunohistochemistry

**Image 3.** Immunohistochemistry of paraffin-embedded human lung cancer using Cortactin antibody at dilution of 1:100 (40x lens). Perform microwave antigen retrieval with 10 mM PBS buffer pH 7.2 before commencing with IHC staining protocol.