



[Go to Product page](#)

Datasheet for ABIN7266515

anti-CKB antibody

3 Images

Overview

Quantity:	100 µL
Target:	CKB
Reactivity:	Human
Host:	Rabbit
Clonality:	Monoclonal
Conjugate:	This CKB antibody is un-conjugated
Application:	Western Blotting (WB), Immunohistochemistry (IHC)

Product Details

Purpose:	Creatine kinase B type (CKB) Rabbit mAb
Immunogen:	A synthesized peptide derived from human Creatine kinase B type (CKB)
Isotype:	IgG
Cross-Reactivity:	Human, Mouse, Rat
Characteristics:	Monoclonal Antibodies
Purification:	Affinity purification

Target Details

Target:	CKB
Alternative Name:	CKB (CKB Products)
Background:	The protein encoded by this gene is a cytoplasmic enzyme involved in energy homeostasis. The

Target Details

encoded protein reversibly catalyzes the transfer of phosphate between ATP and various phosphogens such as creatine phosphate. It acts as a homodimer in brain as well as in other tissues, and as a heterodimer with a similar muscle isozyme in heart. The encoded protein is a member of the ATP:guanido phosphotransferase protein family. A pseudogene of this gene has been characterized. [provided by RefSeq, Jul 2008],B-CK, BCK, CKBB, HEL-211, HEL-S-29,Cancer,Endocrine & Metabolism,Kinase,Neuroscience,Signal Transduction,CKB

Molecular Weight: 43kDa

Gene ID: 1152

UniProt: [P12277](#)

Application Details

Application Notes: WB,1:500 - 1:2000,IHC,1:50 - 1:200

Restrictions: For Research Use only

Handling

Format: Liquid

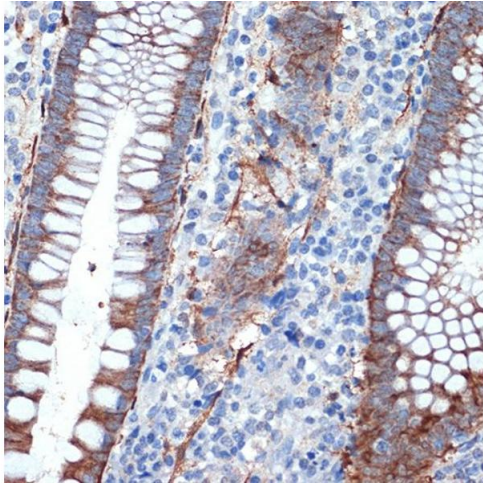
Buffer: PBS with 0.02 % sodium azide,0.05 % BSA,50 % glycerol, pH 7.3.

Preservative: Sodium azide

Precaution of Use: This product contains Sodium azide: a POISONOUS AND HAZARDOUS SUBSTANCE which should be handled by trained staff only.

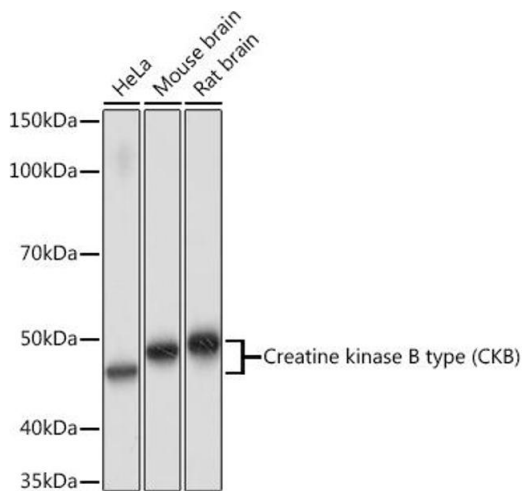
Storage: -20 °C

Storage Comment: Store at -20°C. Avoid freeze / thaw cycles.



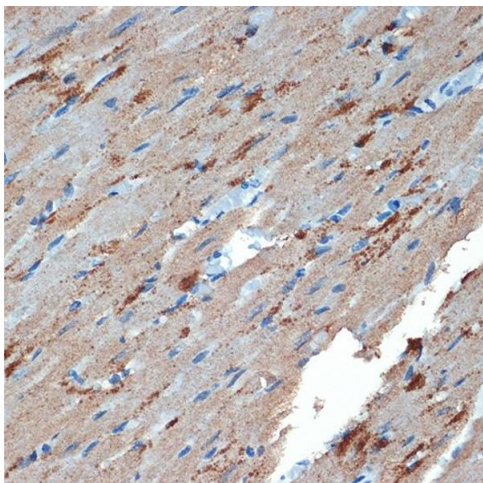
Immunohistochemistry

Image 1. Immunohistochemistry of paraffin-embedded human appendix using Creatine kinase B type (CKB) Rabbit mAb (ABIN7266515) at dilution of 1:100 (40x lens). Perform microwave antigen retrieval with 10 mM Tris/EDTA buffer pH 9.0 before commencing with IHC staining protocol.



Western Blotting

Image 2. Western blot analysis of extracts of various cell lines, using Creatine kinase B type (CKB) Rabbit mAb (ABIN7266515) at 1:1000 dilution. Secondary antibody: HRP Goat Anti-Rabbit IgG (H+L) (ABIN1684268 and ABIN3020597) at 1:10000 dilution. Lysates/proteins: 25 µg per lane. Blocking buffer: 3% nonfat dry milk in TBST. Detection: ECL Basic Kit (RM00020). Exposure time: 90s.



Immunohistochemistry

Image 3. Immunohistochemistry of paraffin-embedded rat heart using Creatine kinase B type (CKB) Rabbit mAb (ABIN7266515) at dilution of 1:100 (40x lens). Perform microwave antigen retrieval with 10 mM Tris/EDTA buffer pH 9.0 before commencing with IHC staining protocol.