

Datasheet for ABIN7266518  
**anti-CRTC1 antibody (AA 1-200)**[Go to Product page](#)

## 1 Image

## Overview

Quantity:	100 µL
Target:	CRTC1
Binding Specificity:	AA 1-200
Reactivity:	Human
Host:	Rabbit
Clonality:	Polyclonal
Conjugate:	This CRTC1 antibody is un-conjugated
Application:	Western Blotting (WB)

## Product Details

Purpose:	CRTC1 Rabbit pAb
Immunogen:	Recombinant fusion protein containing a sequence corresponding to amino acids 1-200 of human CRTC1 (NP_056136.2).
Sequence:	MATSN NPRKF SEKIALHNQK QAEETAAFEE VMKDLSLTRA ARLQLQKSQY LQLGPSRGQY YGGSLPNVNQ IGS GTMDLPF QTPFQSSGLD TSRTTRHHGL VDRVYRERGR LGSPHRRPLS VDKHGRQADS CPYGTMYLSP PADTSWRRTN SDSALHQSTM TPTQPESFSS GSQDVHQKRV LLLTVPGMEE TTSEADKNLS
Isotype:	IgG
Cross-Reactivity:	Mouse, Rat
Characteristics:	Polyclonal Antibodies

## Product Details

Purification: Affinity purification

## Target Details

Target: CRTC1

Alternative Name: CRTC1 ([CRTC1 Products](#))

Background: Transcriptional coactivator for CREB1 which activates transcription through both consensus and variant cAMP response element (CRE sites. Acts as a coactivator, in the SIK/TORC signaling pathway, being active when dephosphorylated and acts independently of CREB1 'Ser-133' phosphorylation. Enhances the interaction of CREB1 with TAF4. Regulates the expression of specific CREB-activated genes such as the steroidogenic gene, StAR. Potent coactivator of PGC1alpha and inducer of mitochondrial biogenesis in muscle cells. In the hippocampus, involved in late-phase long-term potentiation (L-LTP maintenance at the Schaffer collateral-CA1 synapses. May be required for dendritic growth of developing cortical neurons (By similarity. In concert with SIK1, regulates the light-induced entrainment of the circadian clock. In response to light stimulus, coactivates the CREB-mediated transcription of PER1 which plays an important role in the photic entrainment of the circadian clock.,CRTC1,MECT1,TORC-1,TORC1,WAMTP1,Epigenetics & Nuclear Signaling,Signal Transduction,Endocrine & Metabolism,Mitochondrial metabolism,Mitochondrial Biogenesis,CRTC1

Molecular Weight: 62kDa/67kDa/68kDa

Gene ID: 23373

UniProt: [Q6UUV9](#)

## Application Details

Application Notes: WB,1:200 - 1:2000

Restrictions: For Research Use only

## Handling

Format: Liquid

Buffer: PBS with 0.02 % sodium azide,50 % glycerol, pH 7.3.

Preservative: Sodium azide

Precaution of Use: This product contains Sodium azide: a POISONOUS AND HAZARDOUS SUBSTANCE which

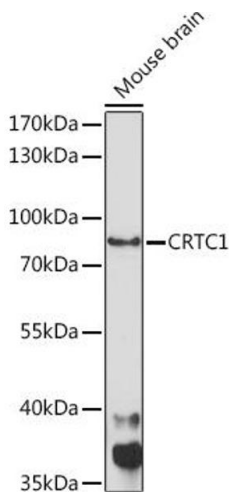
Handling

should be handled by trained staff only.

Storage: -20 °C

Storage Comment: Store at -20°C. Avoid freeze / thaw cycles.

Images



Western Blotting

**Image 1.** Western blot analysis of extracts of Mouse brain, using CRTC1 Rabbit pAb (ABIN7266518) at 1:1000 dilution. Secondary antibody: HRP Goat Anti-Rabbit IgG (H+L) (ABIN1684268 and ABIN3020597) at 1:10000 dilution. Lysates/proteins: 25 µg per lane. Blocking buffer: 3 % nonfat dry milk in TBST. Detection: ECL Enhanced Kit (RM00021). Exposure time: 90s.