

Datasheet for ABIN7266526
anti-CRY2 antibody (AA 36-266)[Go to Product page](#)

1 Image

Overview

Quantity:	100 µL
Target:	CRY2
Binding Specificity:	AA 36-266
Reactivity:	Human
Host:	Rabbit
Clonality:	Polyclonal
Conjugate:	This CRY2 antibody is un-conjugated
Application:	Western Blotting (WB)

Product Details

Purpose:	CRY2 Rabbit pAb
Immunogen:	Recombinant fusion protein containing a sequence corresponding to amino acids 36-266 of human CRY2 (NP_066940.2).
Sequence:	PAPGTDSASS VHWFRKGLRL HDNPALLAAV RGARCVRCVY ILDPWFAASS SVGINRWRFL LQSLEDLDTS LRKLNRLRFV VRGQPADVFP RLFKEWGVTR LTFEYDSEPF GKERDAAIMK MAKEAGVEVV TENSHTLYDL DRIIELNGQK PPLTYKRFQA IISRMELPKK PVGLVTSQQM ESCRAEIQEN HDETYGVPSL EELGFPTTEGL GPAVWQGGET EALARLDKHL E
Isotype:	IgG
Cross-Reactivity:	Human, Mouse, Rat
Characteristics:	Polyclonal Antibodies

Product Details

Purification: Affinity purification

Target Details

Target: CRY2

Alternative Name: CRY2 ([CRY2 Products](#))

Background: This gene encodes a flavin adenine dinucleotide-binding protein that is a key component of the circadian core oscillator complex, which regulates the circadian clock. This gene is upregulated by CLOCK/ARNTL heterodimers but then represses this upregulation in a feedback loop using PER/CRY heterodimers to interact with CLOCK/ARNTL. Polymorphisms in this gene have been associated with altered sleep patterns. The encoded protein is widely conserved across plants and animals. Two transcript variants encoding different isoforms have been found for this gene. [provided by RefSeq, Feb 2014],CRY2,HCRY2,PHLL2,Neuroscience,Cardiovascular,Blood,Blood Pressure regulation,CRY2

Molecular Weight: 60kDa/66kDa

Gene ID: 1408

UniProt: [Q49AN0](#)

Pathways: [Response to Water Deprivation](#), [Protein targeting to Nucleus](#)

Application Details

Application Notes: WB,1:500 - 1:2000

Restrictions: For Research Use only

Handling

Format: Liquid

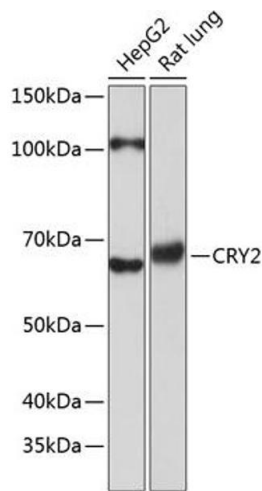
Buffer: PBS with 0.02 % sodium azide,50 % glycerol, pH 7.3.

Preservative: Sodium azide

Precaution of Use: This product contains Sodium azide: a POISONOUS AND HAZARDOUS SUBSTANCE which should be handled by trained staff only.

Storage: -20 °C

Storage Comment: Store at -20°C. Avoid freeze / thaw cycles.



Western Blotting

Image 1. Western blot analysis of extracts of various cell lines, using CRY2 Polyclonal Antibody (ABIN7266526) at 1:1000 dilution. Secondary antibody: HRP Goat Anti-Rabbit IgG (H+L) (ABIN1684268 and ABIN3020597) at 1:10000 dilution. Lysates/proteins: 25 µg per lane. Blocking buffer: 3 % nonfat dry milk in TBST. Detection: ECL Basic Kit (RM00020). Exposure time: 3 min.