

Datasheet for ABIN7266533  
**anti-Exportin 2 antibody**[Go to Product page](#)

## 1 Image

## Overview

Quantity:	100 µL
Target:	Exportin 2 (CSE1L)
Reactivity:	Human
Host:	Rabbit
Clonality:	Monoclonal
Conjugate:	This Exportin 2 antibody is un-conjugated
Application:	Western Blotting (WB)

## Product Details

Purpose:	Exportin 2 (XPO2) Rabbit mAb
Immunogen:	A synthesized peptide derived from human Exportin 2 (XPO2)
Isotype:	IgG
Cross-Reactivity:	Human, Mouse
Characteristics:	Monoclonal Antibodies
Purification:	Affinity purification

## Target Details

Target:	Exportin 2 (CSE1L)
Alternative Name:	CSE1L ( <a href="#">CSE1L Products</a> )
Background:	Proteins that carry a nuclear localization signal (NLS) are transported into the nucleus by the

## Target Details

importin-alpha/beta heterodimer. Importin-alpha binds the NLS, while importin-beta mediates translocation through the nuclear pore complex. After translocation, RanGTP binds importin-beta and displaces importin-alpha. Importin-alpha must then be returned to the cytoplasm, leaving the NLS protein behind. The protein encoded by this gene binds strongly to NLS-free importin-alpha, and this binding is released in the cytoplasm by the combined action of RANBP1 and RANGAP1. In addition, the encoded protein may play a role both in apoptosis and in cell proliferation. Alternatively spliced transcript variants have been found for this gene. [provided by RefSeq, Jan 2012],CAS, CSE1, XPO2,Apoptosis,Cell Biology & Developmental Biology,Signal Transduction,CSE1L

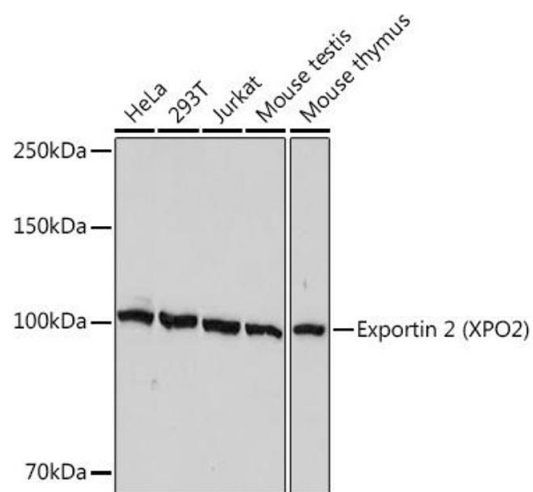
Molecular Weight:	98kDa
Gene ID:	1434
UniProt:	<a href="#">P55060</a>
Pathways:	<a href="#">Protein targeting to Nucleus</a>

## Application Details

Application Notes:	WB,1:500 - 1:2000
Restrictions:	For Research Use only

## Handling

Format:	Liquid
Buffer:	PBS with 0.02 % sodium azide,0.05 % BSA,50 % glycerol, pH 7.3.
Preservative:	Sodium azide
Precaution of Use:	This product contains Sodium azide: a POISONOUS AND HAZARDOUS SUBSTANCE which should be handled by trained staff only.
Storage:	-20 °C
Storage Comment:	Store at -20°C. Avoid freeze / thaw cycles.



### Western Blotting

**Image 1.** Western blot analysis of extracts of various cell lines, using Exportin 2 (XPO2) Rabbit mAb (ABIN7266533) at 1:1000 dilution. Secondary antibody: HRP Goat Anti-Rabbit IgG (H+L) (ABIN1684268 and ABIN3020597) at 1:10000 dilution. Lysates/proteins: 25 µg per lane. Blocking buffer: 3 % nonfat dry milk in TBST. Detection: ECL Basic Kit (RM00020). Exposure time: 10s.