

Datasheet for ABIN7266536
anti-CTP Synthase antibody[Go to Product page](#)

2 Images

Overview

Quantity:	100 µL
Target:	CTP Synthase (CTPS)
Reactivity:	Human
Host:	Rabbit
Clonality:	Monoclonal
Conjugate:	This CTP Synthase antibody is un-conjugated
Application:	Western Blotting (WB)

Product Details

Purpose:	CTP synthase / CTPS Rabbit mAb
Immunogen:	Recombinant protein of Human CTP synthase / CTPS.
Isotype:	IgG
Cross-Reactivity:	Human, Mouse, Rat
Characteristics:	Monoclonal Antibodies
Purification:	Affinity purification

Target Details

Target:	CTP Synthase (CTPS)
Alternative Name:	CTP synthase / CTPS (CTPS Products)
Background:	This gene encodes an enzyme responsible for the catalytic conversion of UTP (uridine

Target Details

triphosphate) to CTP (cytidine triphosphate). This reaction is an important step in the biosynthesis of phospholipids and nucleic acids. Activity of this protein is important in the immune system, and loss of function of this gene has been associated with immunodeficiency. Alternative splicing results in multiple transcript variants.,CTPS1,CTPS,GATD5,IMD24,Signal Transduction,Endocrine & Metabolism,Nucleotide metabolism,CTP synthase / CTPS

Molecular Weight: 41kDa/66kDa

Gene ID: 1503

UniProt: [P17812](#)

Pathways: [Proton Transport](#), [Ribonucleoside Biosynthetic Process](#)

Application Details

Application Notes: WB,1:500 - 1:2000

Restrictions: For Research Use only

Handling

Format: Liquid

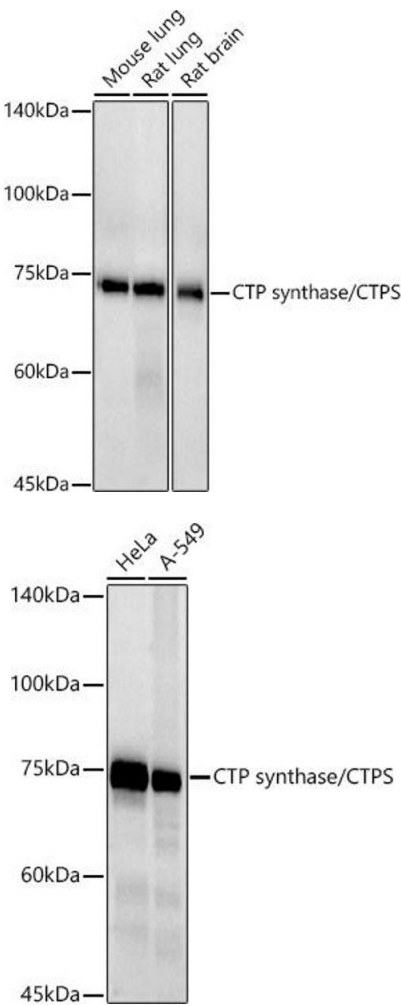
Buffer: PBS with 0.02 % sodium azide,0.05 % BSA,50 % glycerol, pH 7.3.

Preservative: Sodium azide

Precaution of Use: This product contains Sodium azide: a POISONOUS AND HAZARDOUS SUBSTANCE which should be handled by trained staff only.

Storage: -20 °C

Storage Comment: Store at -20°C. Avoid freeze / thaw cycles.



Western Blotting

Image 1. Western blot analysis of extracts of various cell lines, using CTP synthase/CTPS antibody (ABIN7266536) at 1:500 dilution. Secondary antibody: HRP Goat Anti-Rabbit IgG (H+L) (ABIN1684268 and ABIN3020597) at 1:10000 dilution. Lysates/proteins: 25 µg per lane. Blocking buffer: 3 % nonfat dry milk in TBST. Detection: ECL Basic Kit (RM00020). Exposure time: 90s.

Western Blotting

Image 2. Western blot analysis of extracts of various cell lines, using CTP synthase/CTPS antibody (ABIN7266536) at 1:500 dilution. Secondary antibody: HRP Goat Anti-Rabbit IgG (H+L) (ABIN1684268 and ABIN3020597) at 1:10000 dilution. Lysates/proteins: 25 µg per lane. Blocking buffer: 3 % nonfat dry milk in TBST. Detection: ECL Basic Kit (RM00020). Exposure time: 10s.