



[Go to Product page](#)

Datasheet for ABIN7266537
anti-CSMD2 antibody (AA 2050-2150)

1 Image

Overview

Quantity:	100 µL
Target:	CSMD2
Binding Specificity:	AA 2050-2150
Reactivity:	Human
Host:	Rabbit
Clonality:	Polyclonal
Conjugate:	This CSMD2 antibody is un-conjugated
Application:	Western Blotting (WB)

Product Details

Purpose:	CSMD2 Rabbit pAb
Immunogen:	A synthetic peptide corresponding to a sequence within amino acids 2050-2150 of human CSMD2 (NP_443128.2).
Sequence:	TSHETTVYFH SDHSQNRPGF KLEYQDLTYS HQISSFLRGF DLSELERTNS TPPVAASYVW DLDPGCEAYE LQECPDPEPF ANGIVRGAGY NVGQSVTFEC L
Isotype:	IgG
Cross-Reactivity:	Human, Mouse, Rat
Characteristics:	Polyclonal Antibodies
Purification:	Affinity purification

Target Details

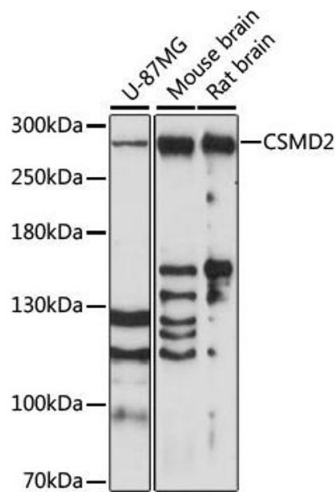
Target:	CSMD2
Alternative Name:	CSMD2 (CSMD2 Products)
Background:	The protein encoded by this gene is thought to be involved in the control of complement. Defects in this gene have been associated with schizophrenia. This gene may act as a tumor suppressor for colorectal cancer.,CSMD2,dJ1007G16.1,dJ1007G16.2,dJ947L8.1,Cell Biology & Developmental Biology,CSMD2
Molecular Weight:	380kDa
Gene ID:	114784
UniProt:	Q7Z408

Application Details

Application Notes:	WB,1:500 - 1:2000
Restrictions:	For Research Use only

Handling

Format:	Liquid
Buffer:	PBS with 0.02 % sodium azide,50 % glycerol, pH 7.3.
Preservative:	Sodium azide
Precaution of Use:	This product contains Sodium azide: a POISONOUS AND HAZARDOUS SUBSTANCE which should be handled by trained staff only.
Storage:	-20 °C
Storage Comment:	Store at -20°C. Avoid freeze / thaw cycles.



Western Blotting

Image 1. Western blot analysis of extracts of various cell lines, using CSMD2 antibody (ABIN7266537) at 1:1000 dilution. Secondary antibody: HRP Goat Anti-Rabbit IgG (H+L) (ABIN1684268 and ABIN3020597) at 1:10000 dilution. Lysates/proteins: 25 µg per lane. Blocking buffer: 3 % nonfat dry milk in TBST. Detection: ECL Basic Kit (RM00020). Exposure time: 90s.