



[Go to Product page](#)

Datasheet for ABIN7266543

anti-Cullin 3 antibody

4 Images

Overview

Quantity:	100 µL
Target:	Cullin 3 (CUL3)
Reactivity:	Human
Host:	Rabbit
Clonality:	Monoclonal
Conjugate:	This Cullin 3 antibody is un-conjugated
Application:	Western Blotting (WB), Immunohistochemistry (IHC)

Product Details

Purpose:	Cullin 3 Rabbit mAb
Immunogen:	A synthesized peptide derived from human Cullin 3 .
Isotype:	IgG
Cross-Reactivity:	Human, Mouse, Rat
Characteristics:	Monoclonal Antibodies
Purification:	Affinity purification

Target Details

Target:	Cullin 3 (CUL3)
Alternative Name:	CUL3 (CUL3 Products)
Background:	This gene encodes a member of the cullin protein family. The encoded protein plays a critical

Target Details

role in the polyubiquitination and subsequent degradation of specific protein substrates as the core component and scaffold protein of an E3 ubiquitin ligase complex. Complexes including the encoded protein may also play a role in late endosome maturation. Mutations in this gene are a cause of type 2E pseudohypoaldosteronism. Alternatively spliced transcript variants encoding multiple isoforms have been observed for this gene. [provided by RefSeq, Mar 2012],CUL-3,PHA2E,CUL3,Cullin 3,cullin-3,Apoptosis,Cancer,Cell Biology & Developmental Biology,Cell Cycle,Cell Cycle_Cell cycle inhibitors,Ubiquitin,Ubiquitin_Ubiquitin-Proteasome Signaling Pathway,CUL3

Molecular Weight: 89kDa

Gene ID: 8452

UniProt: [Q13618](#)

Pathways: [M Phase](#)

Application Details

Application Notes: WB,1:500 - 1:2000,IHC,1:50 - 1:200

Restrictions: For Research Use only

Handling

Format: Liquid

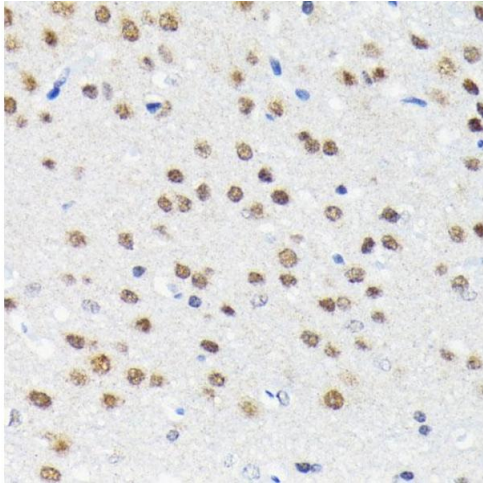
Buffer: PBS with 0.02 % sodium azide,0.05 % BSA,50 % glycerol, pH 7.3.

Preservative: Sodium azide

Precaution of Use: This product contains Sodium azide: a POISONOUS AND HAZARDOUS SUBSTANCE which should be handled by trained staff only.

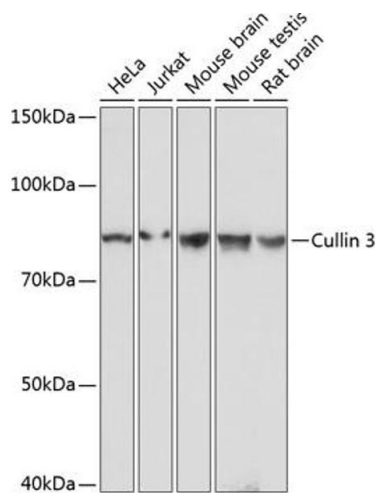
Storage: -20 °C

Storage Comment: Store at -20°C. Avoid freeze / thaw cycles.



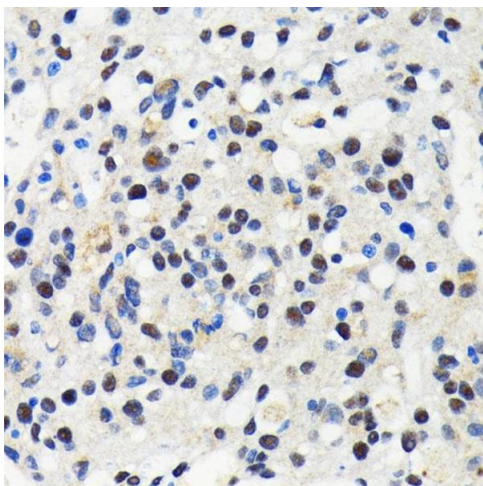
Immunohistochemistry

Image 1. Immunohistochemistry of paraffin-embedded rat brain using Cullin 3 antibody (ABIN7266543) at dilution of 1:100 (40x lens). Perform microwave antigen retrieval with 10 mM PBS buffer pH 7.2 before commencing with IHC staining protocol.



Western Blotting

Image 2. Western blot analysis of extracts of various cell lines, using Cullin 3 antibody (ABIN7266543) at 1:1000 dilution. Secondary antibody: HRP Goat Anti-Rabbit IgG (H+L) (ABIN1684268 and ABIN3020597) at 1:10000 dilution. Lysates/proteins: 25 µg per lane. Blocking buffer: 3 % nonfat dry milk in TBST. Detection: ECL Basic Kit (RM00020). Exposure time: 1s.



Immunohistochemistry

Image 3. Immunohistochemistry of paraffin-embedded human oophoroma using Cullin 3 antibody (ABIN7266543) at dilution of 1:100 (40x lens). Perform microwave antigen retrieval with 10 mM PBS buffer pH 7.2 before commencing with IHC staining protocol.

Please check the [product details page](#) for more images. Overall 4 images are available for ABIN7266543.