



[Go to Product page](#)

Datasheet for ABIN7266551
anti-Cyclin A antibody

7 Images

Overview

Quantity:	100 µL
Target:	Cyclin A (CCNA2)
Reactivity:	Human
Host:	Rabbit
Clonality:	Monoclonal
Conjugate:	This Cyclin A antibody is un-conjugated
Application:	Western Blotting (WB), Immunohistochemistry (IHC), Immunofluorescence (IF)

Product Details

Purpose:	Cyclin A2 Rabbit mAb
Immunogen:	A synthesized peptide derived from human Cyclin A2
Isotype:	IgG
Cross-Reactivity:	Human, Mouse, Rat
Characteristics:	Monoclonal Antibodies
Purification:	Affinity purification

Target Details

Target:	Cyclin A (CCNA2)
Alternative Name:	CCNA2 (CCNA2 Products)
Background:	The protein encoded by this gene belongs to the highly conserved cyclin family, whose

Target Details

members function as regulators of the cell cycle. This protein binds and activates cyclin-dependent kinase 2 and thus promotes transition through G1/S and G2/M. [provided by RefSeq, Aug 2016],CCN1,CCNA,Cyclin A2,CCNA2,cyclin-A2,AMPK Signaling Pathway,Cancer,Cardiovascular,Cell Biology & Developmental Biology,Cell Cycle,Cell Cycle_Centrosome,Cell Cycle_Cyclins,DNA Damage & Repair,Endocrine & Metabolism,Epigenetics & Nuclear Signaling,Lipids,Lipids_Lipoproteins/Apolipoproteins,CCNA2

Molecular Weight: 50kDa

Gene ID: 890

UniProt: [P20248](#)

Pathways: [PI3K-Akt Signaling](#), [Cell Division Cycle](#), [AMPK Signaling](#), [Mitotic G1-G1/S Phases](#), [DNA Replication](#), [M Phase](#), [Synthesis of DNA](#)

Application Details

Application Notes: WB,1:500 - 1:2000,IHC,1:50 - 1:200,IF,1:50 - 1:200

Restrictions: For Research Use only

Handling

Format: Liquid

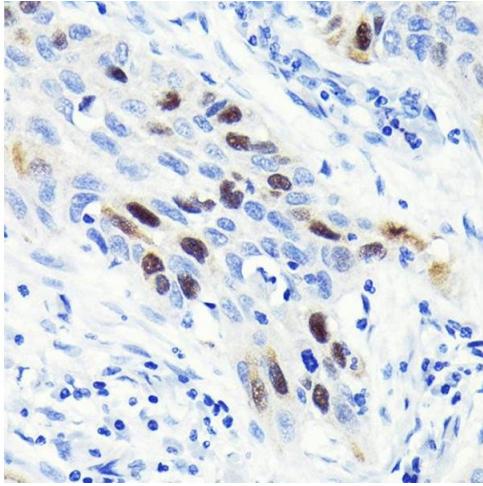
Buffer: PBS with 0.02 % sodium azide,0.05 % BSA,50 % glycerol, pH 7.3.

Preservative: Sodium azide

Precaution of Use: This product contains Sodium azide: a POISONOUS AND HAZARDOUS SUBSTANCE which should be handled by trained staff only.

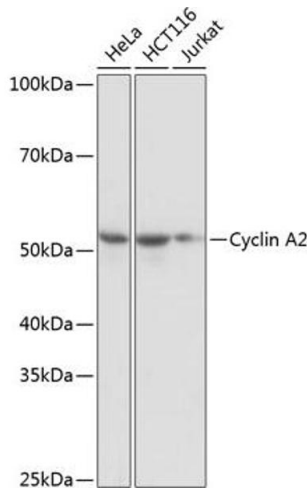
Storage: -20 °C

Storage Comment: Store at -20°C. Avoid freeze / thaw cycles.



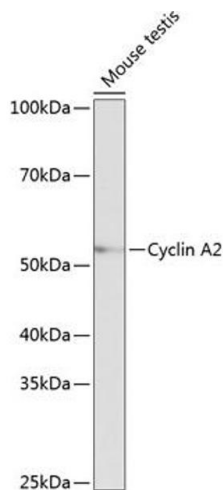
Immunohistochemistry

Image 1. Immunohistochemistry of paraffin-embedded human lung cancer using Cyclin Rabbit mAb (ABIN7266551) at dilution of 1:100 (40x lens). Perform microwave antigen retrieval with 10 mM PBS buffer pH 7.2 before commencing with IHC staining protocol.



Western Blotting

Image 2. Western blot analysis of extracts of various cell lines, using Cyclin antibody (ABIN7266551) at 1:1000 dilution. Secondary antibody: HRP Goat Anti-Rabbit IgG (H+L) (ABIN1684268 and ABIN3020597) at 1:10000 dilution. Lysates/proteins: 25 µg per lane. Blocking buffer: 3 % nonfat dry milk in TBST. Detection: ECL Basic Kit (RM00020). Exposure time: 1s.



Western Blotting

Image 3. Western blot analysis of extracts of Mouse testis, using Cyclin antibody (ABIN7266551) at 1:1000 dilution. Secondary antibody: HRP Goat Anti-Rabbit IgG (H+L) (ABIN1684268 and ABIN3020597) at 1:10000 dilution. Lysates/proteins: 25 µg per lane. Blocking buffer: 3 % nonfat dry milk in TBST. Detection: ECL Basic Kit (RM00020). Exposure time: 10s.

Please check the [product details page](#) for more images. Overall 7 images are available for ABIN7266551.