



[Go to Product page](#)

Datasheet for ABIN7266553
anti-Cyclin B1 antibody

4 Images

Overview

Quantity:	100 µL
Target:	Cyclin B1 (CCNB1)
Reactivity:	Human
Host:	Rabbit
Clonality:	Monoclonal
Conjugate:	This Cyclin B1 antibody is un-conjugated
Application:	Western Blotting (WB), Immunohistochemistry (IHC), Immunoprecipitation (IP)

Product Details

Purpose:	[KO Validated] Cyclin B1 Rabbit mAb
Immunogen:	A synthesized peptide derived from human Cyclin B1
Isotype:	IgG
Cross-Reactivity:	Human, Mouse
Characteristics:	Monoclonal Antibodies
Purification:	Affinity purification
Grade:	KO Validated

Target Details

Target:	Cyclin B1 (CCNB1)
Alternative Name:	CCNB1 (CCNB1 Products)

Target Details

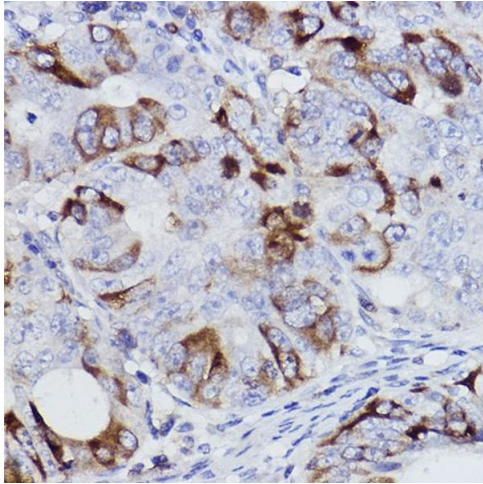
Background:	The protein encoded by this gene is a regulatory protein involved in mitosis. The gene product complexes with p34(cdc2) to form the maturation-promoting factor (MPF). Two alternative transcripts have been found, a constitutively expressed transcript and a cell cycle-regulated transcript, that is expressed predominantly during G2/M phase. The different transcripts result from the use of alternate transcription initiation sites. [provided by RefSeq, Jul 2008],CCNB,CCNB1,Cyclin B1,cyclin B1,AMPK Signaling Pathway,Cancer,Cell Biology & Developmental Biology,Cell Cycle,Cell Cycle_Centrosome,Cell Cycle_Cyclins,Endocrine & Metabolism,Epigenetics & Nuclear Signaling,G2/M DNA Damage Checkpoint,CCNB1
Molecular Weight:	55kDa
Gene ID:	891
UniProt:	P14635
Pathways:	Cell Division Cycle , AMPK Signaling , Mitotic G1-G1/S Phases , M Phase

Application Details

Application Notes:	WB,1:500 - 1:2000,IHC,1:50 - 1:200,IP,1:50 - 1:200
Restrictions:	For Research Use only

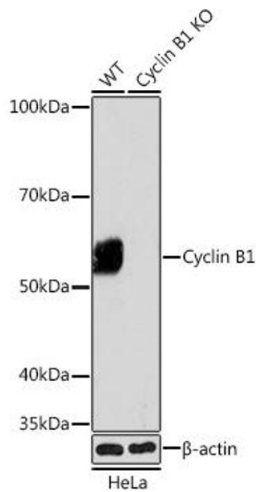
Handling

Format:	Liquid
Buffer:	PBS with 0.02 % sodium azide,0.05 % BSA,50 % glycerol, pH 7.3.
Preservative:	Sodium azide
Precaution of Use:	This product contains Sodium azide: a POISONOUS AND HAZARDOUS SUBSTANCE which should be handled by trained staff only.
Storage:	-20 °C
Storage Comment:	Store at -20°C. Avoid freeze / thaw cycles.



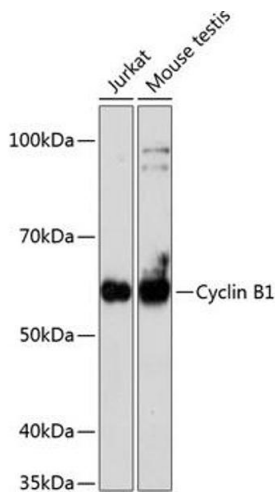
Immunohistochemistry

Image 1. Immunohistochemistry of paraffin-embedded human colon carcinoma using [KO Validated] Cyclin B1 Rabbit mAb (ABIN7266553) at dilution of 1:100 (40x lens). Perform high pressure antigen retrieval with 10 mM citrate buffer pH 6.0 before commencing with IHC staining protocol.



Western Blotting

Image 2. Western blot analysis of extracts from wild type (WT) and Cyclin B1 knockout (KO) HeLa cells, using Cyclin B1 antibody (ABIN7266553) at 1:1000 dilution. Secondary antibody: HRP Goat Anti-Rabbit IgG (H+L) (ABIN1684268 and ABIN3020597) at 1:10000 dilution. Lysates/proteins: 25 µg per lane. Blocking buffer: 3% nonfat dry milk in TBST. Detection: ECL Basic Kit (RM00020). Exposure time: 3 min.



Western Blotting

Image 3. Western blot analysis of extracts of various cell lines, using Cyclin B1 antibody (ABIN7266553) at 1:1000 dilution. Secondary antibody: HRP Goat Anti-Rabbit IgG (H+L) (ABIN1684268 and ABIN3020597) at 1:10000 dilution. Lysates/proteins: 25 µg per lane. Blocking buffer: 3% nonfat dry milk in TBST. Detection: ECL Basic Kit (RM00020). Exposure time: 3 min.

Please check the [product details page](#) for more images. Overall 4 images are available for ABIN7266553.