

Datasheet for ABIN7266561

**anti-Cyclin D1 antibody**

## 7 Images

[Go to Product page](#)

## Overview

Quantity:	100 µL
Target:	Cyclin D1 (CCND1)
Reactivity:	Human
Host:	Rabbit
Clonality:	Monoclonal
Conjugate:	This Cyclin D1 antibody is un-conjugated
Application:	Western Blotting (WB), Immunohistochemistry (IHC), Immunofluorescence (IF), Immunoprecipitation (IP)

## Product Details

Purpose:	[KO Validated] Cyclin D1 Rabbit mAb
Immunogen:	A synthesized peptide derived from human Cyclin D1
Isotype:	IgG
Cross-Reactivity:	Human, Mouse, Rat
Characteristics:	Monoclonal Antibodies
Purification:	Affinity purification
Grade:	KO Validated

## Target Details

Target:	Cyclin D1 (CCND1)
---------	-------------------

## Target Details

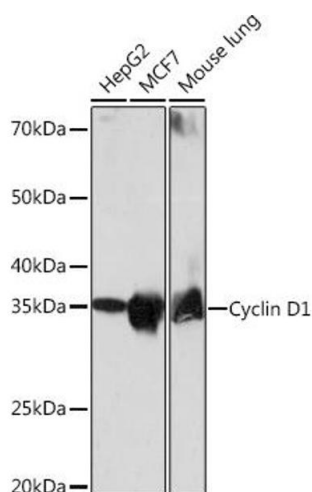
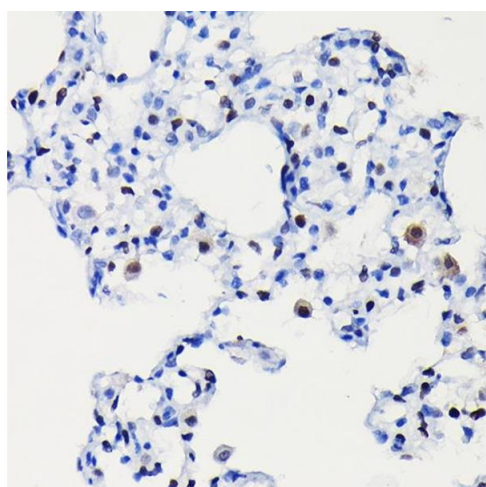
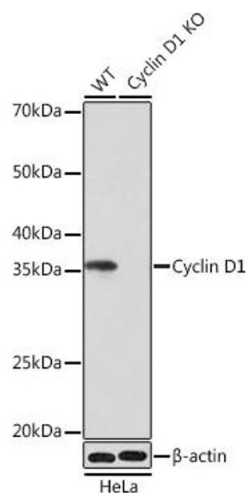
Alternative Name:	CCND1 ( <a href="#">CCND1 Products</a> )
Background:	<p>The protein encoded by this gene belongs to the highly conserved cyclin family, whose members are characterized by a dramatic periodicity in protein abundance throughout the cell cycle. Cyclins function as regulators of CDK kinases. Different cyclins exhibit distinct expression and degradation patterns which contribute to the temporal coordination of each mitotic event. This cyclin forms a complex with and functions as a regulatory subunit of CDK4 or CDK6, whose activity is required for cell cycle G1/S transition. This protein has been shown to interact with tumor suppressor protein Rb and the expression of this gene is regulated positively by Rb. Mutations, amplification and overexpression of this gene, which alters cell cycle progression, are observed frequently in a variety of tumors and may contribute to tumorigenesis. [provided by RefSeq, Jul 2008],BCL1,D11S287E,PRAD1,U21B31,CCND1,Cyclin D1,cyclin D1,Cancer,Cell Biology &amp; Developmental Biology,Cell Cycle,Cell Cycle_Cyclins,Epigenetics &amp; Nuclear Signaling,G1/S Checkpoint,Hedgehog Signaling Pathway,PI3K-Akt Signaling Pathway,Protein phosphorylation,Signal Transduction,CCND1</p>
Molecular Weight:	34kDa
Gene ID:	595
UniProt:	<a href="#">P24385</a>
Pathways:	<a href="#">PI3K-Akt Signaling</a> , <a href="#">Cell Division Cycle</a> , <a href="#">Mitotic G1-G1/S Phases</a> , <a href="#">ER-Nucleus Signaling</a>

## Application Details

Application Notes:	WB,1:500 - 1:2000,IHC,1:50 - 1:200,IF,1:50 - 1:200,IP,1:50 - 1:200
Restrictions:	For Research Use only

## Handling

Format:	Liquid
Buffer:	PBS with 0.02 % sodium azide,0.05 % BSA,50 % glycerol, pH 7.3.
Preservative:	Sodium azide
Precaution of Use:	This product contains Sodium azide: a POISONOUS AND HAZARDOUS SUBSTANCE which should be handled by trained staff only.
Storage:	-20 °C
Storage Comment:	Store at -20°C. Avoid freeze / thaw cycles.



### Western Blotting

**Image 1.** Western blot analysis of extracts from wild type (WT) and Cyclin D1 knockout (KO) HeLa cells, using Cyclin D1 antibody (ABIN7266561) at 1:1000 dilution. Secondary antibody: HRP Goat Anti-Rabbit IgG (H+L) (ABIN1684268 and ABIN3020597) at 1:10000 dilution. Lysates/proteins: 25 µg per lane. Blocking buffer: 3 % nonfat dry milk in TBST. Detection: ECL Basic Kit (RM00020). Exposure time: 1 min.

### Immunohistochemistry

**Image 2.** Immunohistochemistry of paraffin-embedded rat lung using [KO Validated] Cyclin D1 Rabbit mAb (ABIN7266561) at dilution of 1:100 (40x lens). Perform high pressure antigen retrieval with 10 mM citrate buffer pH 6.0 before commencing with IHC staining protocol.

### Western Blotting

**Image 3.** Western blot analysis of extracts of various cell lines, using Cyclin D1 antibody (ABIN7266561) at 1:1000 dilution. Secondary antibody: HRP Goat Anti-Rabbit IgG (H+L) (ABIN1684268 and ABIN3020597) at 1:10000 dilution. Lysates/proteins: 25 µg per lane. Blocking buffer: 3 % nonfat dry milk in TBST. Detection: ECL Basic Kit (RM00020). Exposure time: 1 min.

Please check the [product details page](#) for more images. Overall 7 images are available for ABIN7266561.