

Datasheet for ABIN7266565  
**anti-Cyclin E1 antibody (AA 300-410)**



[Go to Product page](#)

2 Images

## Overview

Quantity:	100 µL
Target:	Cyclin E1 (CCNE1)
Binding Specificity:	AA 300-410
Reactivity:	Human
Host:	Rabbit
Clonality:	Polyclonal
Conjugate:	This Cyclin E1 antibody is un-conjugated
Application:	Western Blotting (WB), Immunohistochemistry (IHC)

## Product Details

Purpose:	Cyclin E1 Rabbit pAb
Immunogen:	Recombinant fusion protein containing a sequence corresponding to amino acids 300-410 of human Cyclin E1 (NP_001229.1).
Sequence:	AASALYHFSS SELMQKVSGY QWCDIENCVK WMVPFAMVIR ETGSSKLKHF RGVADED AHN IQTHRDSL DL LDKARAKKAM LSEQNRASPL PSGLLTPPQS GKKQSSGPEM A
Isotype:	IgG
Cross-Reactivity:	Human, Mouse, Rat
Characteristics:	Polyclonal Antibodies
Purification:	Affinity purification

## Target Details

Target:	Cyclin E1 (CCNE1)
Alternative Name:	CCNE1 ( <a href="#">CCNE1 Products</a> )
Background:	<p>The protein encoded by this gene belongs to the highly conserved cyclin family, whose members are characterized by a dramatic periodicity in protein abundance through the cell cycle. Cyclins function as regulators of CDK kinases. Different cyclins exhibit distinct expression and degradation patterns which contribute to the temporal coordination of each mitotic event. This cyclin forms a complex with and functions as a regulatory subunit of CDK2, whose activity is required for cell cycle G1/S transition. This protein accumulates at the G1-S phase boundary and is degraded as cells progress through S phase. Overexpression of this gene has been observed in many tumors, which results in chromosome instability, and thus may contribute to tumorigenesis. This protein was found to associate with, and be involved in, the phosphorylation of NPAT protein (nuclear protein mapped to the ATM locus), which participates in cell-cycle regulated histone gene expression and plays a critical role in promoting cell-cycle progression in the absence of pRB.,CCNE1,CCNE,pCCNE1,cyclin E1,Epigenetics &amp; Nuclear Signaling,Cancer,Cell Biology &amp; Developmental Biology,Cell Cycle,Centrosome,Cyclins,G1/S Checkpoint,Hedgehog Signaling Pathway,CCNE1</p>
Molecular Weight:	47kDa
Gene ID:	898
UniProt:	<a href="#">P24864</a>
Pathways:	<a href="#">Cell Division Cycle</a> , <a href="#">Intracellular Steroid Hormone Receptor Signaling Pathway</a> , <a href="#">Nuclear Hormone Receptor Binding</a> , <a href="#">Mitotic G1-G1/S Phases</a>

## Application Details

Application Notes:	WB,1:500 - 1:2000,IHC,1:50 - 1:200
Restrictions:	For Research Use only

## Handling

Format:	Liquid
Buffer:	PBS with 0.02 % sodium azide,50 % glycerol, pH 7.3.
Preservative:	Sodium azide
Precaution of Use:	This product contains Sodium azide: a POISONOUS AND HAZARDOUS SUBSTANCE which

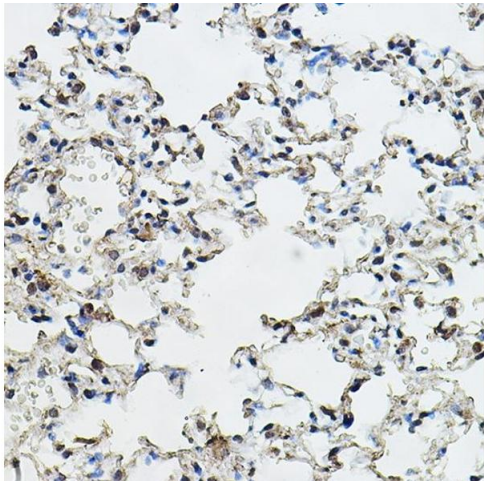
Handling

should be handled by trained staff only.

Storage: -20 °C

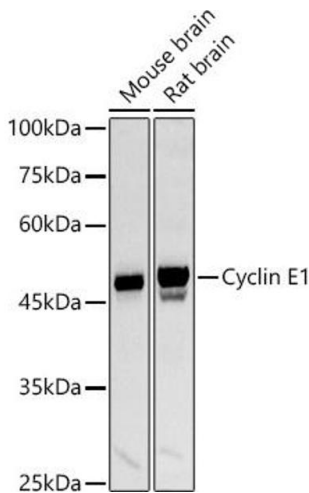
Storage Comment: Store at -20°C. Avoid freeze / thaw cycles.

Images



Immunohistochemistry

**Image 1.** Immunohistochemistry of paraffin-embedded mouse lung using Cyclin E1 Rabbit pAb (ABIN7266565) at dilution of 1:150 (40x lens). Perform high pressure antigen retrieval with 10 mM citrate buffer pH 6.0 before commencing with IHC staining protocol.



Western Blotting

**Image 2.** Western blot analysis of extracts of various cell lines, using Cyclin E1 antibody (ABIN7266565) at 1:1000 dilution. Secondary antibody: HRP Goat Anti-Rabbit IgG (H+L) (ABIN1684268 and ABIN3020597) at 1:10000 dilution. Lysates/proteins: 25 µg per lane. Blocking buffer: 3 % nonfat dry milk in TBST. Detection: ECL Basic Kit (RM00020). Exposure time: 30s.