



[Go to Product page](#)

Datasheet for ABIN7266568

## anti-Cyclin G1 antibody (AA 1-295)

### 2 Images

#### Overview

Quantity:	100 µL
Target:	Cyclin G1 (CCNG1)
Binding Specificity:	AA 1-295
Reactivity:	Human
Host:	Rabbit
Clonality:	Polyclonal
Conjugate:	This Cyclin G1 antibody is un-conjugated
Application:	Western Blotting (WB), Immunofluorescence (IF)

#### Product Details

Purpose:	Cyclin G1 Rabbit pAb
Immunogen:	Recombinant fusion protein containing a sequence corresponding to amino acids 1-295 of human Cyclin G1 (NP_004051.1).
Sequence:	MIEVLTTTDS QKLLHQLNAL LEQESRCQPK VCGLRLIESA HDNGLRMTAR LRDFEVKDLL SLTQFFGFDT ETFSLAVNLL DRFLSKMKVQ PKHLGCVGLS CFYLAVKSIE EERNVPLATD LIRISQYRFT VSDLRMEKI VLEKVCWKVK ATTAFLQLQL YYSLLQENLP LERRNSINFE RLEAQLKACH CRIIFSKAKP SVLALSIAL EIQAQKCVEL TEGIECLQKH SKINGRDLTF WQELVSKCLT EYSSNKCSKP NVQKCLKWIVS GRTARQLKHS YYRITHLPTI PEMVP
Isotype:	IgG
Cross-Reactivity:	Human, Mouse
Characteristics:	Polyclonal Antibodies

## Product Details

---

Purification: Affinity purification

## Target Details

---

Target: Cyclin G1 (CCNG1)

Alternative Name: CCNG1 ([CCNG1 Products](#))

Background: The eukaryotic cell cycle is governed by cyclin-dependent protein kinases (CDKs) whose activities are regulated by cyclins and CDK inhibitors. The protein encoded by this gene is a member of the cyclin family and contains the cyclin box. The encoded protein lacks the protein destabilizing (PEST) sequence that is present in other family members. Transcriptional activation of this gene can be induced by tumor protein p53. Two transcript variants encoding the same protein have been identified for this gene.,CCNG1,CCNG,cyclin-G1,Epigenetics & Nuclear Signaling,Cell Biology & Developmental Biology,Cell Cycle,Cyclins,CCNG1

Molecular Weight: 18kDa/34kDa

Gene ID: 900

UniProt: [P51959](#)

Pathways: [p53 Signaling](#)

## Application Details

---

Application Notes: WB,1:500 - 1:2000,IF,1:50 - 1:200

Restrictions: For Research Use only

## Handling

---

Format: Liquid

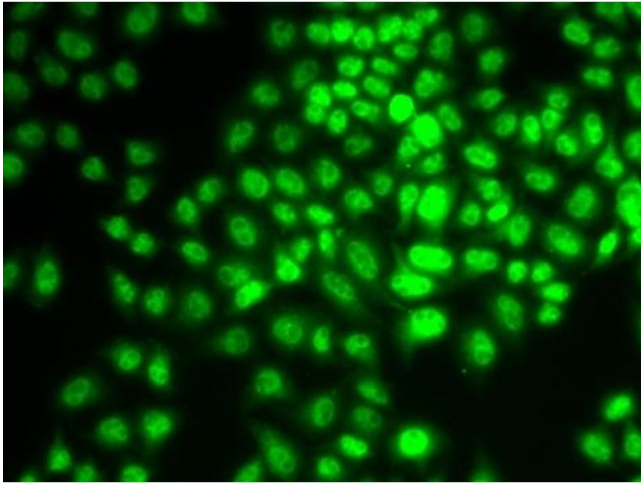
Buffer: PBS with 0.02 % sodium azide,50 % glycerol, pH 7.3.

Preservative: Sodium azide

Precaution of Use: This product contains Sodium azide: a POISONOUS AND HAZARDOUS SUBSTANCE which should be handled by trained staff only.

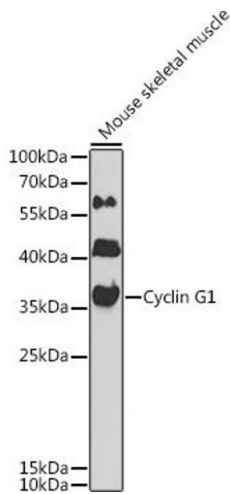
Storage: -20 °C

Storage Comment: Store at -20°C. Avoid freeze / thaw cycles.



### Immunofluorescence

**Image 1.** Immunofluorescence analysis of HeLa cells using Cyclin G1 antibody .



### Western Blotting

**Image 2.** Western blot analysis of extracts of mouse skeletal muscle, using Cyclin G1 antibody at 1:1000 dilution. Secondary antibody: HRP Goat Anti-Rabbit IgG (H+L) (ABIN1684268 and ABIN3020597) at 1:10000 dilution. Lysates/proteins: 25 µg per lane. Blocking buffer: 3 % nonfat dry milk in TBST. Detection: ECL Enhanced Kit (RM00021). Exposure time: 90s.