

Datasheet for ABIN7266569

anti-Cyclin H antibody

4 Images

[Go to Product page](#)

Overview

Quantity:	100 µL
Target:	Cyclin H (CCNH)
Reactivity:	Human
Host:	Rabbit
Clonality:	Monoclonal
Conjugate:	This Cyclin H antibody is un-conjugated
Application:	Western Blotting (WB), Immunohistochemistry (IHC), Immunofluorescence (IF)

Product Details

Purpose:	Cyclin H Rabbit mAb
Immunogen:	A synthesized peptide derived from human Cyclin H
Isotype:	IgG
Cross-Reactivity:	Human, Mouse
Characteristics:	Monoclonal Antibodies
Purification:	Affinity purification

Target Details

Target:	Cyclin H (CCNH)
Alternative Name:	CCNH (CCNH Products)
Background:	The protein encoded by this gene belongs to the highly conserved cyclin family, whose

Target Details

members are characterized by a dramatic periodicity in protein abundance through the cell cycle. Cyclins function as regulators of CDK kinases. Different cyclins exhibit distinct expression and degradation patterns which contribute to the temporal coordination of each mitotic event. This cyclin forms a complex with CDK7 kinase and ring finger protein MAT1. The kinase complex is able to phosphorylate CDK2 and CDC2 kinases, thus functions as a CDK-activating kinase (CAK). This cyclin and its kinase partner are components of TFIIH, as well as RNA polymerase II protein complexes. They participate in two different transcriptional regulation processes, suggesting an important link between basal transcription control and the cell cycle machinery. A pseudogene of this gene is found on chromosome 4. Alternate splicing results in multiple transcript variants.[provided by RefSeq, Nov 2010],CAK, CycH, p34, p37,Cell Biology & Developmental Biology,Cell Cycle,Cell Cycle_Cyclins,DNA Damage & Repair,Epigenetics & Nuclear Signaling,CCNH

Molecular Weight: 38kDa

Gene ID: 902

UniProt: [P51946](#)

Pathways: [Cell Division Cycle](#), [Mitotic G1-G1/S Phases](#), [M Phase](#)

Application Details

Application Notes: WB,1:500 - 1:2000,IHC,1:50 - 1:200,IF,1:50 - 1:200

Restrictions: For Research Use only

Handling

Format: Liquid

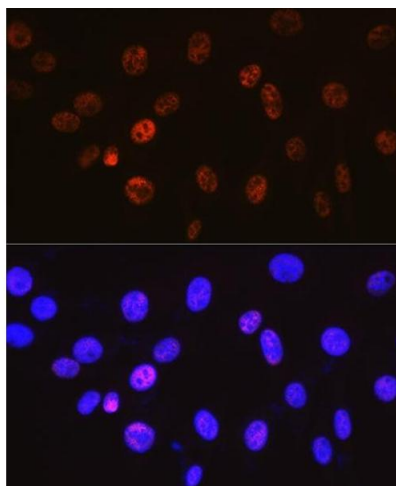
Buffer: PBS with 0.02 % sodium azide,0.05 % BSA,50 % glycerol, pH 7.3.

Preservative: Sodium azide

Precaution of Use: This product contains Sodium azide: a POISONOUS AND HAZARDOUS SUBSTANCE which should be handled by trained staff only.

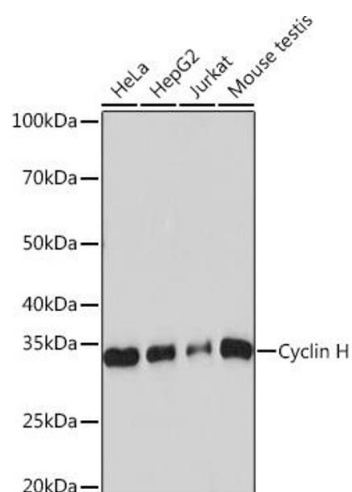
Storage: -20 °C

Storage Comment: Store at -20°C. Avoid freeze / thaw cycles.



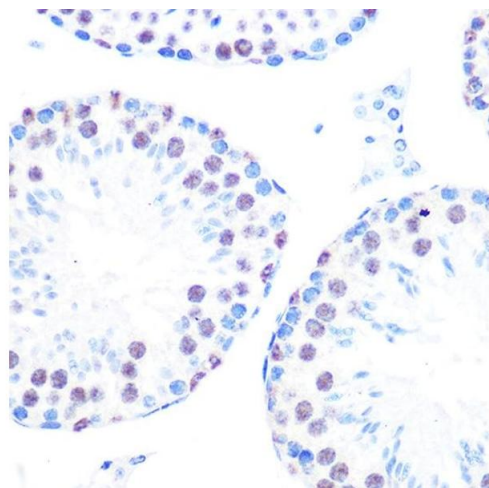
Immunofluorescence

Image 1. Immunofluorescence analysis of NIH-3T3 cells using Cyclin H Rabbit mAb (ABIN7266569) at dilution of 1:100 (40x lens). Blue: DAPI for nuclear staining.



Western Blotting

Image 2. Western blot analysis of extracts of various cell lines, using Cyclin H Rabbit mAb (ABIN7266569) at 1:1000 dilution. Secondary antibody: HRP Goat Anti-Rabbit IgG (H+L) (ABIN1684268 and ABIN3020597) at 1:10000 dilution. Lysates/proteins: 25 µg per lane. Blocking buffer: 3 % nonfat dry milk in TBST. Detection: ECL Basic Kit (RM00020). Exposure time: 60s.



Immunohistochemistry

Image 3. Immunohistochemistry of paraffin-embedded mouse testis using Cyclin H Rabbit mAb (ABIN7266569) at dilution of 1:100 (40x lens). Perform microwave antigen retrieval with 10 mM PBS buffer pH 7.2 before commencing with IHC staining protocol.

Please check the [product details page](#) for more images. Overall 4 images are available for ABIN7266569.