

Datasheet for ABIN7266570
anti-Cyclin I antibody (AA 257-377)[Go to Product page](#)

1 Image

Overview

Quantity:	100 µL
Target:	Cyclin I (CCNI)
Binding Specificity:	AA 257-377
Reactivity:	Human
Host:	Rabbit
Clonality:	Polyclonal
Conjugate:	This Cyclin I antibody is un-conjugated
Application:	Western Blotting (WB)

Product Details

Purpose:	Cyclin I Rabbit pAb
Immunogen:	Recombinant fusion protein containing a sequence corresponding to amino acids 257-377 of human Cyclin I (NP_006826.1).
Sequence:	NSVYVYRPLK HTLVTCDKGV FRLHPSSVPG PDFSKDNSKP EVPVRGTAAF YHHLPAASGC KQTSTKRKVE EMEVDDFYDG IKRLYNEDNV SENVGVCVT DLSRQEGHAS PCPPLQPVSV M
Isotype:	IgG
Cross-Reactivity:	Human, Mouse, Rat
Characteristics:	Polyclonal Antibodies
Purification:	Affinity purification

Target Details

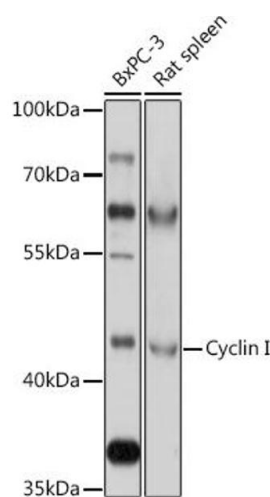
Target:	Cyclin I (CCNI)
Alternative Name:	CCNI (CCNI Products)
Background:	The protein encoded by this gene belongs to the highly conserved cyclin family, whose members are characterized by a dramatic periodicity in protein abundance through the cell cycle. Cyclins function as regulators of CDK kinases. Different cyclins exhibit distinct expression and degradation patterns which contribute to the temporal coordination of each mitotic event. This cyclin shows the highest similarity with cyclin G. The transcript of this gene was found to be expressed constantly during cell cycle progression. [provided by RefSeq, Jan 2017],CCNI,CCNI1,CYC1,CYI,cyclin-I,Epigenetics & Nuclear Signaling,Cell Biology & Developmental Biology,Cell Cycle,Cyclins,CCNI
Molecular Weight:	40kDa/42kDa
Gene ID:	10983
UniProt:	Q14094
Pathways:	Cell Division Cycle

Application Details

Application Notes:	WB,1:500 - 1:2000
Restrictions:	For Research Use only

Handling

Format:	Liquid
Buffer:	PBS with 0.02 % sodium azide,50 % glycerol, pH 7.3.
Preservative:	Sodium azide
Precaution of Use:	This product contains Sodium azide: a POISONOUS AND HAZARDOUS SUBSTANCE which should be handled by trained staff only.
Storage:	-20 °C
Storage Comment:	Store at -20°C. Avoid freeze / thaw cycles.



Western Blotting

Image 1. Western blot analysis of extracts of various cell lines, using Cyclin I antibody (ABIN7266570) at 1:1000 dilution. Secondary antibody: HRP Goat Anti-Rabbit IgG (H+L) (ABIN1684268 and ABIN3020597) at 1:10000 dilution. Lysates/proteins: 25 µg per lane. Blocking buffer: 3 % nonfat dry milk in TBST. Detection: ECL Basic Kit (RM00020). Exposure time: 10s.