

Datasheet for ABIN7266571
anti-Cyclin L2 antibody (AA 60-150)[Go to Product page](#)

1 Image

Overview

Quantity:	100 µL
Target:	Cyclin L2 (CCNL2)
Binding Specificity:	AA 60-150
Reactivity:	Human
Host:	Rabbit
Clonality:	Polyclonal
Conjugate:	This Cyclin L2 antibody is un-conjugated
Application:	Western Blotting (WB)

Product Details

Purpose:	Cyclin L2 Rabbit pAb
Immunogen:	Recombinant fusion protein containing a sequence corresponding to amino acids 60-150 of human Cyclin L2 (NP_001307082.1).
Sequence:	QLYARKKVDL THLEGEVEKR KHAIEEAKAQ ARGLLPGGTQ VLDGTSGFSP APKLVESPKE GKGSKPSPLS VKNTKRRLEG AKKAKADSPV N
Isotype:	IgG
Cross-Reactivity:	Human
Characteristics:	Polyclonal Antibodies
Purification:	Affinity purification

Target Details

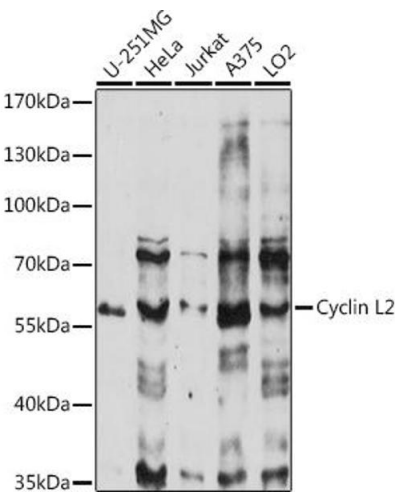
Target:	Cyclin L2 (CCNL2)
Alternative Name:	CCNL2 (CCNL2 Products)
Background:	The protein encoded by this gene belongs to the cyclin family. Through its interaction with several proteins, such as RNA polymerase II, splicing factors, and cyclin-dependent kinases, this protein functions as a regulator of the pre-mRNA splicing process, as well as in inducing apoptosis by modulating the expression of apoptotic and antiapoptotic proteins. Alternatively spliced transcript variants encoding different isoforms have been described for this gene.,CCNL2,ANIA-6B,CCNM,CCNS,HCLA-ISO,HLA-ISO,PCEE,SB138,cyclin-L2,CCNL2
Molecular Weight:	24kDa/25kDa/33kDa/58kDa
Gene ID:	81669
UniProt:	Q96S94

Application Details

Application Notes:	WB,1:500 - 1:2000
Restrictions:	For Research Use only

Handling

Format:	Liquid
Buffer:	PBS with 0.02 % sodium azide,50 % glycerol, pH 7.3.
Preservative:	Sodium azide
Precaution of Use:	This product contains Sodium azide: a POISONOUS AND HAZARDOUS SUBSTANCE which should be handled by trained staff only.
Storage:	-20 °C
Storage Comment:	Store at -20°C. Avoid freeze / thaw cycles.



Western Blotting

Image 1. Western blot analysis of extracts of various cell lines, using Cyclin L2 antibody (ABIN7266571) at 1:1000 dilution. Secondary antibody: HRP Goat Anti-Rabbit IgG (H+L) (ABIN1684268 and ABIN3020597) at 1:10000 dilution. Lysates/proteins: 25 µg per lane. Blocking buffer: 3 % nonfat dry milk in TBST. Detection: ECL Enhanced Kit (RM00021). Exposure time: 90s.