

Datasheet for ABIN7266576

**anti-CDK1 antibody**

## 7 Images

[Go to Product page](#)

## Overview

Quantity:	100 µL
Target:	CDK1
Reactivity:	Human
Host:	Rabbit
Clonality:	Monoclonal
Conjugate:	This CDK1 antibody is un-conjugated
Application:	Western Blotting (WB), Immunohistochemistry (IHC), Immunofluorescence (IF), Immunoprecipitation (IP)

## Product Details

Purpose:	CDK1 Rabbit mAb
Immunogen:	A synthesized peptide derived from human CDK1
Isotype:	IgG
Cross-Reactivity:	Human, Mouse, Rat
Characteristics:	Monoclonal Antibodies
Purification:	Affinity purification

## Target Details

Target:	CDK1
Alternative Name:	CDK1 ( <a href="#">CDK1 Products</a> )

## Target Details

Background:	<p>The protein encoded by this gene is a member of the Ser/Thr protein kinase family. This protein is a catalytic subunit of the highly conserved protein kinase complex known as M-phase promoting factor (MPF), which is essential for G1/S and G2/M phase transitions of eukaryotic cell cycle. Mitotic cyclins stably associate with this protein and function as regulatory subunits. The kinase activity of this protein is controlled by cyclin accumulation and destruction through the cell cycle. The phosphorylation and dephosphorylation of this protein also play important regulatory roles in cell cycle control. Alternatively spliced transcript variants encoding different isoforms have been found for this gene. [provided by RefSeq, Mar 2009],CDC2, CDC28A, P34CDC2,Apoptosis,Cell Biology &amp; Developmental Biology,Cell Cycle,Cell Cycle_Centrosome,Cytoskeleton_Microtubules,Epigenetics &amp; Nuclear Signaling,ErbB-HER Signaling Pathway,G protein signaling,G2/M DNA Damage Checkpoint,Immunology &amp; Inflammation,Kinase,Kinase_Serine/threonine kinases,Neurodegenerative Diseases,Neuroscience,Protein phosphorylation,Signal Transduction,CDK1</p>
Molecular Weight:	34kDa
Gene ID:	983
UniProt:	<a href="#">P06493</a>
Pathways:	<a href="#">Cell Division Cycle</a> , <a href="#">Fc-epsilon Receptor Signaling Pathway</a> , <a href="#">Neurotrophin Signaling Pathway</a> , <a href="#">Activation of Innate immune Response</a> , <a href="#">Mitotic G1-G1/S Phases</a> , <a href="#">DNA Replication</a> , <a href="#">M Phase</a> , <a href="#">Toll-Like Receptors Cascades</a> , <a href="#">Synthesis of DNA</a>

## Application Details

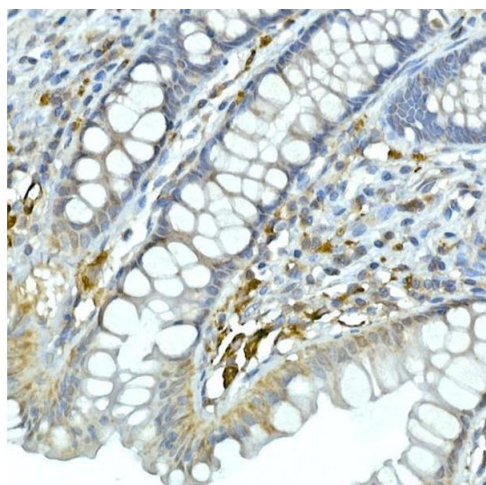
Application Notes:	WB,1:500 - 1:2000,IHC,1:50 - 1:200,IF,1:50 - 1:200,IP,1:50 - 1:200
Restrictions:	For Research Use only

## Handling

Format:	Liquid
Buffer:	PBS with 0.02 % sodium azide,0.05 % BSA,50 % glycerol, pH 7.3.
Preservative:	Sodium azide
Precaution of Use:	This product contains Sodium azide: a POISONOUS AND HAZARDOUS SUBSTANCE which should be handled by trained staff only.
Storage:	-20 °C

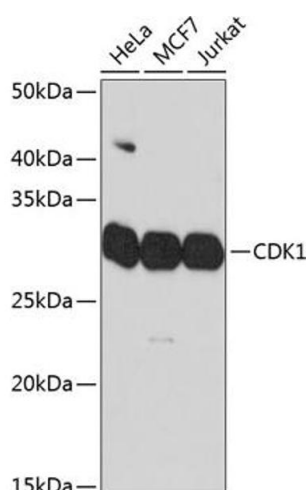
Storage Comment: Store at -20°C. Avoid freeze / thaw cycles.

## Images



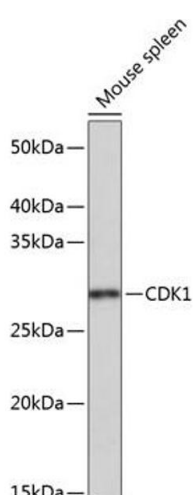
### Immunohistochemistry

**Image 1.** Immunohistochemistry of paraffin-embedded human esophagus using CDK1 Rabbit mAb (ABIN7266576) at dilution of 1:100 (40x lens). Perform microwave antigen retrieval with 10 mM PBS buffer pH 7.2 before commencing with IHC staining protocol.



### Western Blotting

**Image 2.** Western blot analysis of extracts of various cell lines, using CDK1 Rabbit mAb (ABIN7266576) at 1:1000 dilution. Secondary antibody: HRP Goat Anti-Rabbit IgG (H+L) (ABIN1684268 and ABIN3020597) at 1:10000 dilution. Lysates/proteins: 25 µg per lane. Blocking buffer: 3 % nonfat dry milk in TBST. Detection: ECL Basic Kit (RM00020). Exposure time: 90s.



### Western Blotting

**Image 3.** Western blot analysis of extracts of Mouse spleen, using CDK1 Rabbit mAb (ABIN7266576) at 1:1000 dilution. Secondary antibody: HRP Goat Anti-Rabbit IgG (H+L) (ABIN1684268 and ABIN3020597) at 1:10000 dilution. Lysates/proteins: 25 µg per lane. Blocking buffer: 3 % nonfat dry milk in TBST. Detection: ECL Basic Kit (RM00020). Exposure time: 3 min.

Please check the [product details page](#) for more images. Overall 7 images are available for ABIN7266576.