



[Go to Product page](#)

Datasheet for ABIN7266593
anti-CDK5R2 antibody (AA 170-310)

1 Image

Overview

Quantity:	100 µL
Target:	CDK5R2
Binding Specificity:	AA 170-310
Reactivity:	Human
Host:	Rabbit
Clonality:	Polyclonal
Conjugate:	This CDK5R2 antibody is un-conjugated
Application:	Western Blotting (WB)

Product Details

Purpose:	CDK5R2 Rabbit pAb
Immunogen:	Recombinant fusion protein containing a sequence corresponding to amino acids 170-310 of human CDK5R2 (NP_003927.1).
Sequence:	PGGSPRRVIV QASTGELLRC LGDFVCRRCY RLKELSPGEL VGWFRGVDRS LLLQGWQDQA FITPANLVFV YLLCRESLRG DELASAAELQ AAFLTCLYLA YSYMGNEISY PLKPFLVEPD KERFWQRCLR LIQLSPQML R
Isotype:	IgG
Cross-Reactivity:	Mouse
Characteristics:	Polyclonal Antibodies
Purification:	Affinity purification

Target Details

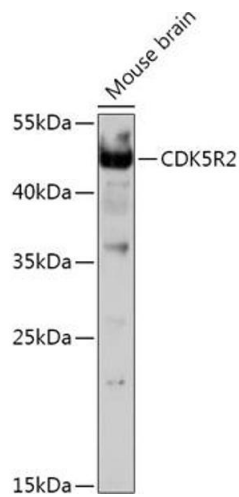
Target:	CDK5R2
Alternative Name:	CDK5R2 (CDK5R2 Products)
Background:	The protein encoded by this gene is a neuron-specific activator of CDK5 kinase. It associates with CDK5 to form an active kinase. This protein and neuron-specific CDK5 activator CDK5R1/p39NCK5A both share limited similarity to cyclins, and thus may define a distinct family of cyclin-dependent kinase activating proteins. [provided by RefSeq, Jul 2008],NCK5AI,P39,p39nck5ai,CDK5R2,Signal Transduction,Kinase,Neuroscience,CDK5R2
Gene ID:	8941
UniProt:	Q13319

Application Details

Application Notes:	WB,1:500 - 1:2000
Restrictions:	For Research Use only

Handling

Format:	Liquid
Buffer:	PBS with 0.02 % sodium azide,50 % glycerol, pH 7.3.
Preservative:	Sodium azide
Precaution of Use:	This product contains Sodium azide: a POISONOUS AND HAZARDOUS SUBSTANCE which should be handled by trained staff only.
Storage:	-20 °C
Storage Comment:	Store at -20°C. Avoid freeze / thaw cycles.



Western Blotting

Image 1. Western blot analysis of extracts of Mouse brain, using CDK5R2 antibody (ABIN7266593) at 1:1000 dilution. Secondary antibody: HRP Goat Anti-Rabbit IgG (H+L) (ABIN1684268 and ABIN3020597) at 1:10000 dilution. Lysates/proteins: 25 µg per lane. Blocking buffer: 3 % nonfat dry milk in TBST. Detection: ECL Basic Kit (RM00020). Exposure time: 90s.