

Datasheet for ABIN7266594
anti-CDK6 antibody



[Go to Product page](#)

1 Image

Overview

Quantity:	100 µL
Target:	CDK6
Reactivity:	Human
Host:	Rabbit
Clonality:	Monoclonal
Conjugate:	This CDK6 antibody is un-conjugated
Application:	Western Blotting (WB)

Product Details

Purpose:	CDK6 Rabbit mAb
Immunogen:	A synthesized peptide derived from human CDK6
Isotype:	IgG
Cross-Reactivity:	Human, Rat
Characteristics:	Monoclonal Antibodies
Purification:	Affinity purification

Target Details

Target:	CDK6
Alternative Name:	CDK6 (CDK6 Products)
Background:	The protein encoded by this gene is a member of the cyclin-dependent protein kinase (CDK)

Target Details

family. CDK family members are highly similar to the gene products of *Saccharomyces cerevisiae cdc28*, and *Schizosaccharomyces pombe cdc2*, and are known to be important regulators of cell cycle progression. This kinase is a catalytic subunit of the protein kinase complex that is important for cell cycle G1 phase progression and G1/S transition. The activity of this kinase first appears in mid-G1 phase, which is controlled by the regulatory subunits including D-type cyclins and members of INK4 family of CDK inhibitors. This kinase, as well as CDK4, has been shown to phosphorylate, and thus regulate the activity of, tumor suppressor protein Rb. Expression of this gene is up-regulated in some types of cancer. Multiple alternatively spliced variants, encoding the same protein, have been identified. [provided by RefSeq, Nov 2009],MCPH12, PLSTIRE,Cancer,Cell Biology & Developmental Biology,Cell Cycle,Epigenetics & Nuclear Signaling,G1/S Checkpoint,Kinase,Kinase_Serine/threonine kinases,Protein phosphorylation,Signal Transduction,CDK6

Molecular Weight: 37kDa

Gene ID: 1021

UniProt: [Q00534](#)

Pathways: [Cell Division Cycle, Mitotic G1-G1/S Phases](#)

Application Details

Application Notes: WB,1:500 - 1:2000

Restrictions: For Research Use only

Handling

Format: Liquid

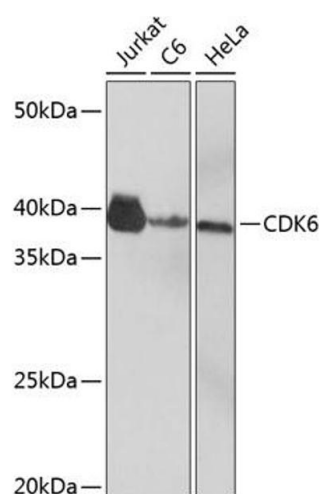
Buffer: PBS with 0.02 % sodium azide,0.05 % BSA,50 % glycerol, pH 7.3.

Preservative: Sodium azide

Precaution of Use: This product contains Sodium azide: a POISONOUS AND HAZARDOUS SUBSTANCE which should be handled by trained staff only.

Storage: -20 °C

Storage Comment: Store at -20°C. Avoid freeze / thaw cycles.



Western Blotting

Image 1. Western blot analysis of extracts of various cell lines, using CDK6 Rabbit mAb (ABIN7266594) at 1:1000 dilution. Secondary antibody: HRP Goat Anti-Rabbit IgG (H+L) (ABIN1684268 and ABIN3020597) at 1:10000 dilution. Lysates/proteins: 25 µg per lane. Blocking buffer: 3 % nonfat dry milk in TBST. Detection: ECL Basic Kit (RM00020). Exposure time: 3 min.