



[Go to Product page](#)

Datasheet for ABIN7266595
anti-CDK6 antibody (AA 1-326)

7 Images

Overview

Quantity:	100 µL
Target:	CDK6
Binding Specificity:	AA 1-326
Reactivity:	Human
Host:	Rabbit
Clonality:	Polyclonal
Conjugate:	This CDK6 antibody is un-conjugated
Application:	Western Blotting (WB), Immunohistochemistry (IHC), Immunofluorescence (IF)

Product Details

Purpose:	CDK6 Rabbit pAb
Immunogen:	Recombinant fusion protein containing a sequence corresponding to amino acids 1-326 of human CDK6 (NP_001250.1).
Sequence:	MEKDGLCRAD QQYECVAEIG EGAYGKVFKA RDLKNGGRFV ALKRVRVQTG EEGMPLSTIR EVAVLRHLET FEHPNVVRLF DVCTVSRTDR ETKLTLVFEH VDQDLTTYLD KVPEPGVPTE TIKDMMFQLL RGLDFLHSHR VVHRDLKPQN ILVTSSGQIK LADFG LARIY SFQMALTSV VTLWYRAPEV LLQSSYATPV DLWSVGCIFA EMFRRKPLFR GSSDVDQLGK ILDVIGLPGE EDWPRDVALP RQAFHSKSAQ PIEKFVTDID ELGKDLLLKC LTFNPAKRIS AYSALSHPYF QDLERCKENL DSHLPPSQNT SELNTA
Isotype:	IgG
Cross-Reactivity:	Human, Mouse, Rat

Product Details

Characteristics: Polyclonal Antibodies

Purification: Affinity purification

Target Details

Target: CDK6

Alternative Name: CDK6 ([CDK6 Products](#))

Background: The protein encoded by this gene is a member of the cyclin-dependent protein kinase (CDK) family. CDK family members are highly similar to the gene products of *Saccharomyces cerevisiae cdc28*, and *Schizosaccharomyces pombe cdc2*, and are known to be important regulators of cell cycle progression. This kinase is a catalytic subunit of the protein kinase complex that is important for cell cycle G1 phase progression and G1/S transition. The activity of this kinase first appears in mid-G1 phase, which is controlled by the regulatory subunits including D-type cyclins and members of INK4 family of CDK inhibitors. This kinase, as well as CDK4, has been shown to phosphorylate, and thus regulate the activity of, tumor suppressor protein Rb. Expression of this gene is up-regulated in some types of cancer. Multiple alternatively spliced variants, encoding the same protein, have been identified. CDK6, MCPH12, PLSTIRE, Epigenetics & Nuclear Signaling, Cancer, Signal Transduction, Kinase, Serine/threonine kinases, Cell Biology & Developmental Biology, Cell Cycle, G1/S Checkpoint, CDK6

Molecular Weight: 36kDa

Gene ID: 1021

UniProt: [Q00534](#)

Pathways: [Cell Division Cycle, Mitotic G1-G1/S Phases](#)

Application Details

Application Notes: WB, 1:500 - 1:2000, IHC, 1:50 - 1:200, IF, 1:50 - 1:200

Restrictions: For Research Use only

Handling

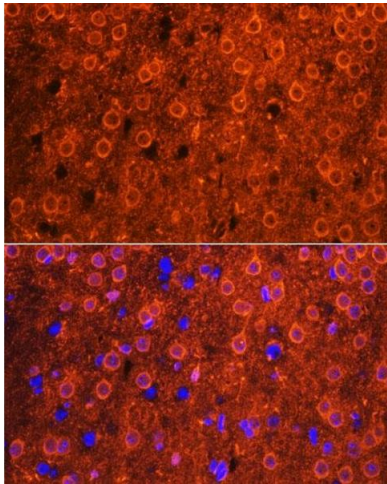
Format: Liquid

Buffer: PBS with 0.02 % sodium azide, 50 % glycerol, pH 7.3.

Handling

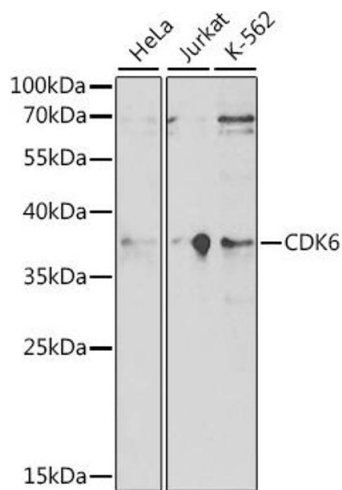
Preservative:	Sodium azide
Precaution of Use:	This product contains Sodium azide: a POISONOUS AND HAZARDOUS SUBSTANCE which should be handled by trained staff only.
Storage:	-20 °C
Storage Comment:	Store at -20°C. Avoid freeze / thaw cycles.

Images



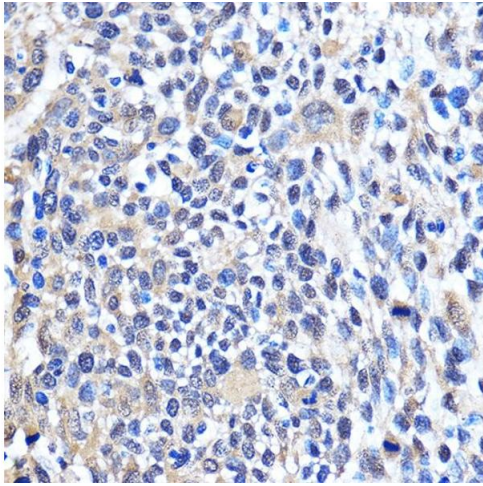
Immunofluorescence

Image 1. Immunofluorescence analysis of mouse brain using CDK6 antibody (ABIN7266595) at dilution of 1:100. Blue: DAPI for nuclear staining.



Western Blotting

Image 2. Western blot analysis of extracts of various cell lines, using CDK6 antibody (ABIN7266595) at 1:1000 dilution. Secondary antibody: HRP Goat Anti-Rabbit IgG (H+L) (ABIN1684268 and ABIN3020597) at 1:10000 dilution. Lysates/proteins: 25 µg per lane. Blocking buffer: 3 % nonfat dry milk in TBST.



Immunohistochemistry

Image 3. Immunohistochemistry of paraffin-embedded Human esophageal using CDK6 Rabbit pAb (ABIN7266595) at dilution of 1:100 (40x lens). Perform microwave antigen retrieval with 10 mM PBS buffer pH 7.2 before commencing with IHC staining protocol.

Please check the [product details page](#) for more images. Overall 7 images are available for ABIN7266595.