

Datasheet for ABIN7266612  
**anti-CDKL3 antibody (AA 1-120)**

## 2 Images

[Go to Product page](#)

## Overview

Quantity:	100 µL
Target:	CDKL3
Binding Specificity:	AA 1-120
Reactivity:	Human
Host:	Rabbit
Clonality:	Polyclonal
Conjugate:	This CDKL3 antibody is un-conjugated
Application:	Western Blotting (WB), Immunohistochemistry (IHC)

## Product Details

Purpose:	CDKL3 Rabbit pAb
Immunogen:	Recombinant fusion protein containing a sequence corresponding to amino acids 1-120 of human CDKL3 (NP_001107047).
Sequence:	MEMYETLGKV GEGSYGTVMK CKHKNTGQIV AIKIFYERPE QSVNKIAMRE IKFLKQFHHE NLVNLIEVFR QKKKIHLVFE FIDHTVLDEL QHYCHGLESK RLRKYLFQIL RAIDYLHSNN
Isotype:	IgG
Cross-Reactivity:	Human, Mouse, Rat
Characteristics:	Polyclonal Antibodies
Purification:	Affinity purification

## Target Details

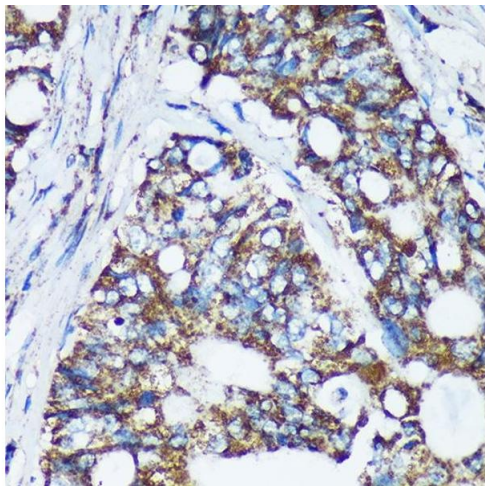
Target:	CDKL3
Alternative Name:	CDKL3 ( <a href="#">CDKL3 Products</a> )
Background:	<p>The protein encoded by this gene is a member of cyclin-dependent protein kinase (CDK) family. CDK family members are highly similar to the gene products of <i>Saccharomyces cerevisiae</i> cdc28, and <i>Schizosaccharomyces pombe</i> cdc2, and are known to be important regulators of cell cycle progression. This gene was identified as a gene absent in leukemic patients with chromosome 5q deletion. This loss may be an important determinant of dysmyelopoiesis.</p> <p>Alternative splicing results in multiple transcript variants encoding different isoforms.,CDKL3,NKIAMRE,Epigenetics &amp; Nuclear Signaling,Cancer,Signal Transduction,Kinase,Cell Biology &amp; Developmental Biology,Cell Cycle,CDKL3</p>
Molecular Weight:	68kDa
Gene ID:	51265
UniProt:	<a href="#">Q8IVW4</a>
Pathways:	<a href="#">Cell Division Cycle</a>

## Application Details

Application Notes:	WB,1:500 - 1:2000,IHC,1:50 - 1:200
Restrictions:	For Research Use only

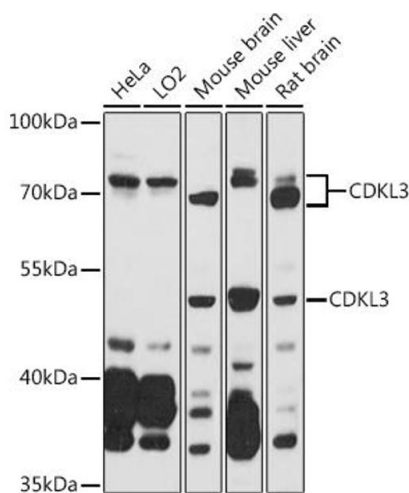
## Handling

Format:	Liquid
Buffer:	PBS with 0.02 % sodium azide,50 % glycerol, pH 7.3.
Preservative:	Sodium azide
Precaution of Use:	This product contains Sodium azide: a POISONOUS AND HAZARDOUS SUBSTANCE which should be handled by trained staff only.
Storage:	-20 °C
Storage Comment:	Store at -20°C. Avoid freeze / thaw cycles.



### Immunohistochemistry

**Image 1.** Immunohistochemistry of paraffin-embedded Human colon carcinoma using CDKL3 Rabbit pAb (ABIN7266612) at dilution of 1:100 (40x lens). Perform microwave antigen retrieval with 10 mM PBS buffer pH 7.2 before commencing with IHC staining protocol.



### Western Blotting

**Image 2.** Western blot analysis of extracts of various cell lines, using CDKL3 antibody (ABIN7266612) at 1:1000 dilution. Secondary antibody: HRP Goat Anti-Rabbit IgG (H+L) (ABIN1684268 and ABIN3020597) at 1:10000 dilution. Lysates/proteins: 25 µg per lane. Blocking buffer: 3 % nonfat dry milk in TBST. Detection: ECL Basic Kit (RM00020). Exposure time: 30s.