



[Go to Product page](#)

Datasheet for ABIN7266619
anti-CHORDC1 antibody (AA 60-160)

1 Image

Overview

Quantity:	100 µL
Target:	CHORDC1
Binding Specificity:	AA 60-160
Reactivity:	Human
Host:	Rabbit
Clonality:	Polyclonal
Conjugate:	This CHORDC1 antibody is un-conjugated
Application:	Western Blotting (WB)

Product Details

Purpose:	CHORDC1 Rabbit pAb
Immunogen:	Recombinant fusion protein containing a sequence corresponding to amino acids 60-160 of human CHORDC1 (NP_036256.2).
Sequence:	TKGRHNSEKP PEPVKPEVKT TEKKELCELK PKFQEHIIQA PKPVEAIKRP SPDEPMTNLE LKISASLKQA LDKLKLSSGN EENKKEEDND EIKIGTSCKN G
Isotype:	IgG
Cross-Reactivity:	Mouse
Characteristics:	Polyclonal Antibodies
Purification:	Affinity purification

Target Details

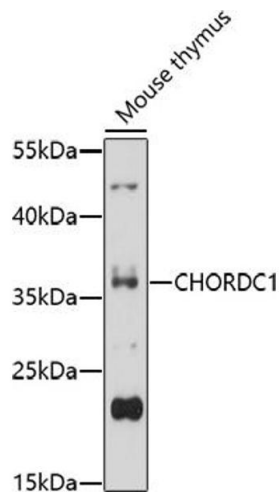
Target:	CHORDC1
Alternative Name:	CHORDC1 (CHORDC1 Products)
Background:	<p>Regulates centrosome duplication, probably by inhibiting the kinase activity of ROCK2.</p> <p>Proposed to act as co-chaperone for HSP90. May play a role in the regulation of NOD1 via a HSP90 chaperone complex. In vitro, has intrinsic chaperone activity. This function may be achieved by inhibiting association of ROCK2 with NPM1. Plays a role in ensuring the localization of the tyrosine kinase receptor EGFR to the plasma membrane, and thus ensures the subsequent regulation of EGFR activity and EGF-induced actin cytoskeleton remodeling. Involved in stress response. Prevents tumorigenesis.,CHORDC1,CHP1,Cell Biology & Developmental Biology,Cell Cycle,Centrosome,CHORDC1</p>
Gene ID:	26973
UniProt:	Q9UHD1

Application Details

Application Notes:	WB,1:500 - 1:2000
Restrictions:	For Research Use only

Handling

Format:	Liquid
Buffer:	PBS with 0.02 % sodium azide,50 % glycerol, pH 7.3.
Preservative:	Sodium azide
Precaution of Use:	This product contains Sodium azide: a POISONOUS AND HAZARDOUS SUBSTANCE which should be handled by trained staff only.
Storage:	-20 °C
Storage Comment:	Store at -20°C. Avoid freeze / thaw cycles.



Western Blotting

Image 1. Western blot analysis of extracts of mouse thymus, using CHORDC1 antibody (ABIN7266619) at 1:1000 dilution. Secondary antibody: HRP Goat Anti-Rabbit IgG (H+L) (ABIN1684268 and ABIN3020597) at 1:10000 dilution. Lysates/proteins: 25 µg per lane. Blocking buffer: 3 % nonfat dry milk in TBST. Detection: ECL Basic Kit (RM00020). Exposure time: 60s.