

Datasheet for ABIN7266630  
**anti-CYB5R1 antibody (AA 1-305)**



[Go to Product page](#)

3 Images

## Overview

Quantity:	100 µL
Target:	CYB5R1
Binding Specificity:	AA 1-305
Reactivity:	Human
Host:	Rabbit
Clonality:	Polyclonal
Conjugate:	This CYB5R1 antibody is un-conjugated
Application:	Western Blotting (WB), Immunohistochemistry (IHC)

## Product Details

Purpose:	CYB5R1 Rabbit pAb
Immunogen:	Recombinant fusion protein containing a sequence corresponding to amino acids 1-305 of human CYB5R1 (NP_057327.2).
Sequence:	MGIQTSPVLL ASLGVGLVTL LGLAVGSYLV RRSRRPQVTL LDPNEKYLLR LLDKTTVSHN TKRFRFALPT AHHTLGLPVG KHIYLSTRID GSLVIRPYTP VTSDEDQGYV DLVIKVVYKLG VHPKFPEGGK MSQYLDLKV GDVVEFRGPS GLLTYTGKGH FNIQPNKKSP PEPRVAKKLG MIAGGTGITP MLQLIRAILK VPEDPTQCFL LFANQTEKDI ILREDLEELQ ARYPNRFKLW FTLDHPPKDW AYSKGFVTAD MIREHLPAPG DDVLVLLCGP PPMVQLACHP NLDKLGYSQK MRFTY
Isotype:	IgG
Cross-Reactivity:	Human, Rat

## Product Details

---

Characteristics: Polyclonal Antibodies

Purification: Affinity purification

## Target Details

---

Target: CYB5R1

Alternative Name: CYB5R1 ([CYB5R1 Products](#))

Background: NADH-cytochrome b5 reductases are involved in desaturation and elongation of fatty acids, cholesterol biosynthesis, drug metabolism, and, in erythrocyte, methemoglobin reduction.,CYB5R1,B5R.1,B5R1,B5R2,NQO3A2,humb5R2,Cancer,Signal Transduction,Endocrine & Metabolism,Lipid Metabolism,Cholesterol Metabolism,Cardiovascular,Lipids,CYB5R1

Gene ID: 51706

UniProt: [Q9UHQ9](#)

## Application Details

---

Application Notes: WB,1:500 - 1:2000,IHC,1:50 - 1:200

Restrictions: For Research Use only

## Handling

---

Format: Liquid

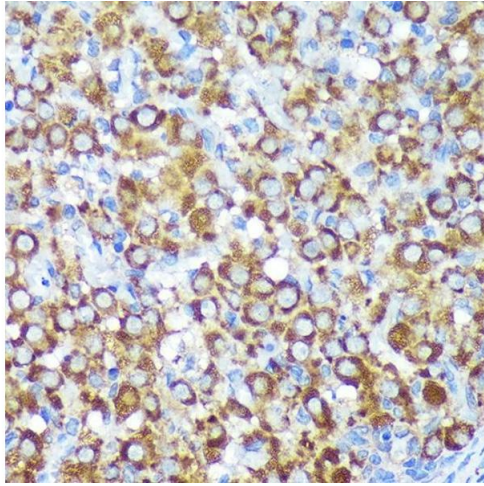
Buffer: PBS with 0.02 % sodium azide,50 % glycerol, pH 7.3.

Preservative: Sodium azide

Precaution of Use: This product contains Sodium azide: a POISONOUS AND HAZARDOUS SUBSTANCE which should be handled by trained staff only.

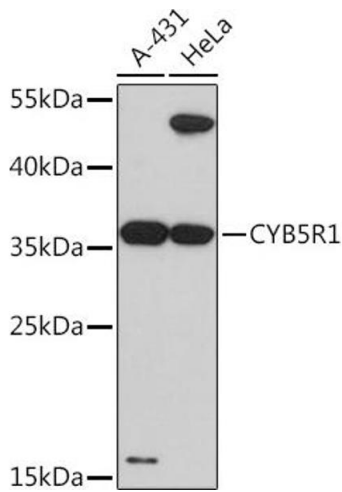
Storage: -20 °C

Storage Comment: Store at -20°C. Avoid freeze / thaw cycles.



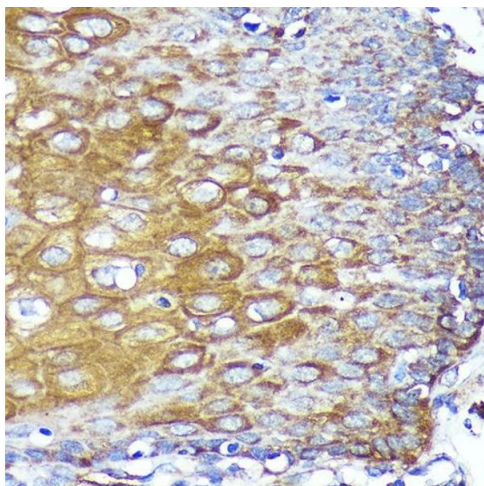
### Immunohistochemistry

**Image 1.** Immunohistochemistry of paraffin-embedded Rat ovary using CYB5R1 Rabbit pAb (ABIN7266630) at dilution of 1:100 (40x lens). Perform microwave antigen retrieval with 10 mM PBS buffer pH 7.2 before commencing with IHC staining protocol.



### Western Blotting

**Image 2.** Western blot analysis of extracts of various cell lines, using CYB5R1 Rabbit pAb (ABIN7266630) at 1:3000 dilution. Secondary antibody: HRP Goat Anti-Rabbit IgG (H+L) (ABIN1684268 and ABIN3020597) at 1:10000 dilution. Lysates/proteins: 25 µg per lane. Blocking buffer: 3 % nonfat dry milk in TBST. Detection: ECL Basic Kit (RM00020). Exposure time: 90s.



### Immunohistochemistry

**Image 3.** Immunohistochemistry of paraffin-embedded Human esophageal using CYB5R1 Rabbit pAb (ABIN7266630) at dilution of 1:100 (40x lens). Perform microwave antigen retrieval with 10 mM PBS buffer pH 7.2 before commencing with IHC staining protocol.