

Datasheet for ABIN7266642

anti-COX6B1 antibody

2 Images

[Go to Product page](#)

Overview

Quantity:	100 µL
Target:	COX6B1
Reactivity:	Human
Host:	Rabbit
Clonality:	Monoclonal
Conjugate:	This COX6B1 antibody is un-conjugated
Application:	Western Blotting (WB), Immunohistochemistry (IHC)

Product Details

Purpose:	COX6B1 Rabbit mAb
Immunogen:	A synthesized peptide derived from human COX6B1.
Isotype:	IgG
Cross-Reactivity:	Human
Characteristics:	Monoclonal Antibodies
Purification:	Affinity purification

Target Details

Target:	COX6B1
Alternative Name:	COX6B1 (COX6B1 Products)
Background:	Cytochrome c oxidase (COX), the terminal enzyme of the mitochondrial respiratory chain,

Target Details

catalyzes the electron transfer from reduced cytochrome c to oxygen. It is a heteromeric complex consisting of 3 catalytic subunits encoded by mitochondrial genes and multiple structural subunits encoded by nuclear genes. The mitochondrially-encoded subunits function in electron transfer, and the nuclear-encoded subunits may be involved in the regulation and assembly of the complex. This nuclear gene encodes subunit VIb. Mutations in this gene are associated with severe infantile encephalomyopathy. Three pseudogenes COX6BP-1, COX6BP-2 and COX6BP-3 have been found on chromosomes 7, 17 and 22q13.1-13.2, respectively.,COX6B1, COX6B, COXG, COXVIb1, cytochrome c oxidase subunit 6B1,Cancer,Signal Transduction,Endocrine & Metabolism,Mitochondrial metabolism,Cytochromes,Mitochondrial markers,Oxidative phosphorylation,Neuroscience,Neurodegenerative Diseases,COX6B1

Molecular Weight: 10kDa

Gene ID: 1340

UniProt: [P14854](#)

Application Details

Application Notes: WB,1:500 - 1:2000,IHC,1:50 - 1:200

Restrictions: For Research Use only

Handling

Format: Liquid

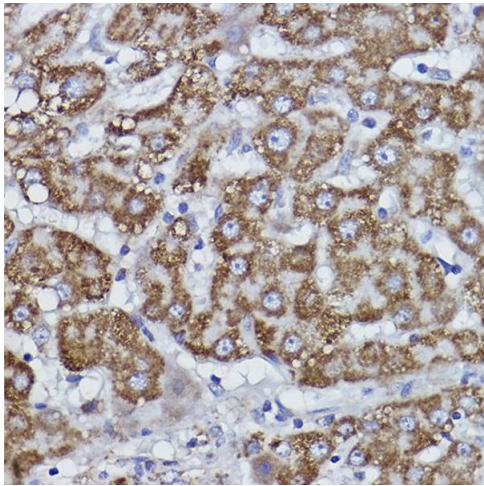
Buffer: PBS with 0.02 % sodium azide,0.05 % BSA,50 % glycerol, pH 7.3.

Preservative: Sodium azide

Precaution of Use: This product contains Sodium azide: a POISONOUS AND HAZARDOUS SUBSTANCE which should be handled by trained staff only.

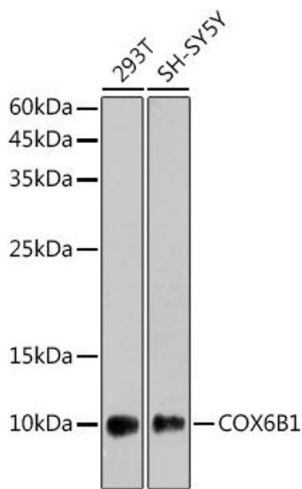
Storage: -20 °C

Storage Comment: Store at -20°C. Avoid freeze / thaw cycles.



Immunohistochemistry

Image 1. Immunohistochemistry of paraffin-embedded human liver using COX6B1 Rabbit mAb (ABIN7266642) at dilution of 1:100 (40x lens). Perform high pressure antigen retrieval with 10 mM citrate buffer pH 6.0 before commencing with IHC staining protocol.



Western Blotting

Image 2. Western blot analysis of extracts of various cell lines, using COX6B1 antibody (ABIN7266642) at 1:1000 dilution. Secondary antibody: HRP Goat Anti-Rabbit IgG (H+L) (ABIN1684268 and ABIN3020597) at 1:10000 dilution. Lysates/proteins: 25 µg per lane. Blocking buffer: 3 % nonfat dry milk in TBST. Detection: ECL Enhanced Kit (RM00021). Exposure time: 180s.