

Datasheet for ABIN7266648

**anti-CYP17A1 antibody****2** Images[Go to Product page](#)

## Overview

Quantity:	100 µL
Target:	CYP17A1
Reactivity:	Human
Host:	Rabbit
Clonality:	Monoclonal
Conjugate:	This CYP17A1 antibody is un-conjugated
Application:	Western Blotting (WB), Immunofluorescence (IF)

## Product Details

Purpose:	CYP17A1 Rabbit mAb
Immunogen:	A synthesized peptide derived from human CYP17A1
Isotype:	IgG
Cross-Reactivity:	Human, Mouse
Characteristics:	Monoclonal Antibodies
Purification:	Affinity purification

## Target Details

Target:	CYP17A1
Alternative Name:	CYP17A1 ( <a href="#">CYP17A1 Products</a> )
Background:	This gene encodes a member of the cytochrome P450 superfamily of enzymes. The

## Target Details

cytochrome P450 proteins are monooxygenases which catalyze many reactions involved in drug metabolism and synthesis of cholesterol, steroids and other lipids. This protein localizes to the endoplasmic reticulum. It has both 17alpha-hydroxylase and 17,20-lyase activities and is a key enzyme in the steroidogenic pathway that produces progestins, mineralocorticoids, glucocorticoids, androgens, and estrogens. Mutations in this gene are associated with isolated steroid-17 alpha-hydroxylase deficiency, 17-alpha-hydroxylase/17,20-lyase deficiency, pseudohermaphroditism, and adrenal hyperplasia. [provided by RefSeq, Jul 2008],CPT7, CYP17, P450C17, S17AH,Cancer,Cardiovascular,Cell Biology & Developmental Biology,Endocrine & Metabolism,Growth factors,Lipid Metabolism,Lipid Metabolism\_Cytochromes,Lipid Metabolism\_Lipases,Lipids,Mitochondrial metabolism,Mitochondrial metabolism\_Cytochromes,Signal Transduction,CYP17A1

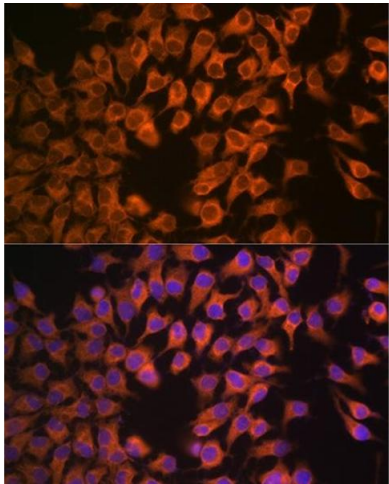
Molecular Weight:	50kDa
Gene ID:	1586
UniProt:	<a href="#">P05093</a>
Pathways:	<a href="#">Metabolism of Steroid Hormones and Vitamin D</a> , <a href="#">Steroid Hormone Biosynthesis</a> , <a href="#">Regulation of Hormone Metabolic Process</a> , <a href="#">Regulation of Hormone Biosynthetic Process</a> , <a href="#">C21-Steroid Hormone Metabolic Process</a> , <a href="#">Cellular Response to Molecule of Bacterial Origin</a>

## Application Details

Application Notes:	WB,1:500 - 1:2000,IF,1:50 - 1:200
Restrictions:	For Research Use only

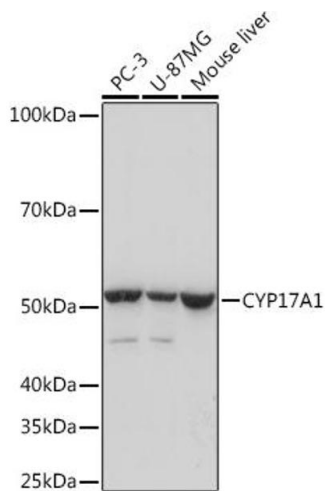
## Handling

Format:	Liquid
Buffer:	PBS with 0.02 % sodium azide,0.05 % BSA,50 % glycerol, pH 7.3.
Preservative:	Sodium azide
Precaution of Use:	This product contains Sodium azide: a POISONOUS AND HAZARDOUS SUBSTANCE which should be handled by trained staff only.
Storage:	-20 °C
Storage Comment:	Store at -20°C. Avoid freeze / thaw cycles.



### Immunofluorescence

**Image 1.** Immunofluorescence analysis of HeLa cells using CYP17 Rabbit mAb (ABIN7266648) at dilution of 1:100 (40x lens). Blue: DAPI for nuclear staining.



### Western Blotting

**Image 2.** Western blot analysis of extracts of various cell lines, using CYP17 Rabbit mAb (ABIN7266648) at 1:1000 dilution. Secondary antibody: HRP Goat Anti-Rabbit IgG (H+L) (ABIN1684268 and ABIN3020597) at 1:10000 dilution. Lysates/proteins: 25 µg per lane. Blocking buffer: 3 % nonfat dry milk in TBST. Detection: ECL Basic Kit (RM00020). Exposure time: 3s.