

Datasheet for ABIN726665
anti-PLGF antibody (AA 131-158)[Go to Product page](#)

1 Image

Overview

Quantity:	100 µL
Target:	PLGF (PGF)
Binding Specificity:	AA 131-158
Reactivity:	Human, Mouse
Host:	Rabbit
Clonality:	Polyclonal
Conjugate:	This PLGF antibody is un-conjugated
Application:	Western Blotting (WB), ELISA

Product Details

Immunogen:	KLH conjugated synthetic peptide derived from mouse PLGF
Isotype:	IgG
Cross-Reactivity:	Human, Mouse
Purification:	Purified by Protein A.

Target Details

Target:	PLGF (PGF)
Alternative Name:	PLGF (PGF Products)
Background:	Synonyms: Placenta growth factor, PGF, PGFL, PIGF, Placental growth factor vascular endothelial growth factor related protein, PIGF 2, PLGF, PIGF2, PLGF_MOUSE, Vascular

Target Details

endothelial growth factor related protein.

Background: The placental-derived growth factor (PlGF) is a dimeric glycoprotein showing a high degree of sequence similarity to the vascular endothelial growth factor. Alternative splicing of the PlGF primary transcript gives rise to two forms, named PlGF-1 and PlGF-2, which differ only in the insertion of a highly basic 21-amino acid stretch at the carboxyl end. The presence of the PlGF mRNA in thyroid, placenta, lung, and goiter has indicated the tissues where this factor functions. However, the role of PlGF in vascular development has not yet been clearly established.

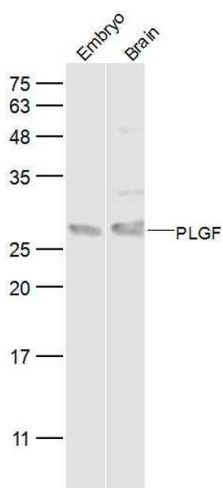
Gene ID:	5228
Pathways:	VEGFR1 Specific Signals

Application Details

Application Notes:	WB 1:300-5000 ELISA 1:500-1000
Restrictions:	For Research Use only

Handling

Format:	Liquid
Concentration:	1 µg/µL
Buffer:	0.01M TBS(pH 7.4) with 1 % BSA, 0.02 % Proclin300 and 50 % Glycerol.
Preservative:	ProClin
Precaution of Use:	This product contains ProClin: a POISONOUS AND HAZARDOUS SUBSTANCE, which should be handled by trained staff only.
Storage:	4 °C,-20 °C
Storage Comment:	Shipped at 4°C. Store at -20°C for one year. Avoid repeated freeze/thaw cycles.
Expiry Date:	12 months



Western Blotting

Image 1. Lane 1: mouse embryo lysates Lane 2: mouse brain lysates probed with PLGF Polyclonal Antibody, Unconjugated at 1:500 dilution and 4°C overnight incubation. Followed by conjugated secondary antibody incubation at 1:10000 for 60 min at 37°C.