

Datasheet for ABIN7266654  
**anti-CYP26A1 antibody**

## 5 Images

[Go to Product page](#)

## Overview

Quantity:	100 µL
Target:	CYP26A1
Reactivity:	Human
Host:	Rabbit
Clonality:	Monoclonal
Conjugate:	This CYP26A1 antibody is un-conjugated
Application:	Western Blotting (WB), Immunohistochemistry (IHC), Immunofluorescence (IF)

## Product Details

Purpose:	CYP26A1 Rabbit mAb
Immunogen:	A synthesized peptide derived from human CYP26A1
Isotype:	IgG
Cross-Reactivity:	Human, Mouse, Rat
Characteristics:	Monoclonal Antibodies
Purification:	Affinity purification

## Target Details

Target:	CYP26A1
Alternative Name:	CYP26A1 ( <a href="#">CYP26A1 Products</a> )
Background:	This gene encodes a member of the cytochrome P450 superfamily of enzymes. The

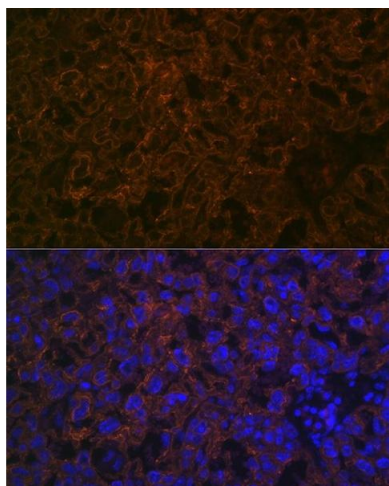
## Target Details

cytochrome P450 proteins are monooxygenases which catalyze many reactions involved in drug metabolism and synthesis of cholesterol, steroids and other lipids. This endoplasmic reticulum protein acts on retinoids, including all-trans-retinoic acid (RA), with both 4-hydroxylation and 18-hydroxylation activities. This enzyme regulates the cellular level of retinoic acid which is involved in regulation of gene expression in both embryonic and adult tissues. Two alternatively spliced transcript variants of this gene, which encode the distinct isoforms, have been reported. [provided by RefSeq, Jul 2008],CP26, CYP26, P450RAI, P450RAI1,Cardiovascular,Endocrine & Metabolism,Lipid Metabolism,Lipid Metabolism\_Cytochromes,Lipid Metabolism\_Lipases,Lipids,Mitochondrial metabolism,Mitochondrial metabolism\_Cytochromes,Signal Transduction,CYP26A1

Molecular Weight:	50kDa
Gene ID:	1592
UniProt:	<a href="#">O43174</a>
Pathways:	<a href="#">Retinoic Acid Receptor Signaling Pathway</a> , <a href="#">Monocarboxylic Acid Catabolic Process</a>

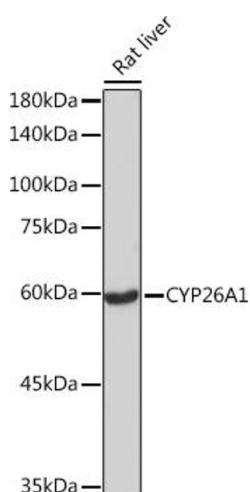
## Application Details

Application Notes:	WB,1:500 - 1:2000,IHC,1:50 - 1:200,IF,1:50 - 1:200
Restrictions:	For Research Use only
Handling	
Format:	Liquid
Buffer:	PBS with 0.02 % sodium azide,0.05 % BSA,50 % glycerol, pH 7.3.
Preservative:	Sodium azide
Precaution of Use:	This product contains Sodium azide: a POISONOUS AND HAZARDOUS SUBSTANCE which should be handled by trained staff only.
Storage:	-20 °C
Storage Comment:	Store at -20°C. Avoid freeze / thaw cycles.



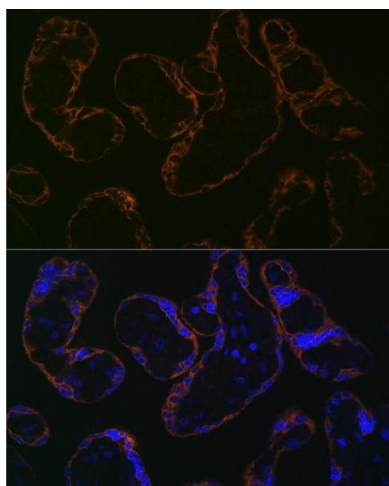
#### Immunofluorescence

**Image 1.** Immunofluorescence analysis of mouse placenta cells using CYP26 Rabbit mAb (ABIN7266654) at dilution of 1:100 (40x lens). Blue: DAPI for nuclear staining.



#### Western Blotting

**Image 2.** Western blot analysis of extracts of Rat liver, using CYP26 Rabbit mAb (ABIN7266654) at 1:1000 dilution. Secondary antibody: HRP Goat Anti-Rabbit IgG (H+L) (ABIN1684268 and ABIN3020597) at 1:10000 dilution. Lysates/proteins: 25 µg per lane. Blocking buffer: 3 % nonfat dry milk in TBST. Detection: ECL Basic Kit (RM00020). Exposure time: 180s.



#### Immunofluorescence

**Image 3.** Immunofluorescence analysis of human placenta cells using CYP26 Rabbit mAb (ABIN7266654) at dilution of 1:100 (40x lens). Blue: DAPI for nuclear staining.

Please check the [product details page](#) for more images. Overall 5 images are available for ABIN7266654.