



[Go to Product page](#)

Datasheet for ABIN7266655  
**anti-CYP26A1 antibody (AA 50-150)**

1 Image

Overview

Quantity:	100 µL
Target:	CYP26A1
Binding Specificity:	AA 50-150
Reactivity:	Human
Host:	Rabbit
Clonality:	Polyclonal
Conjugate:	This CYP26A1 antibody is un-conjugated
Application:	Western Blotting (WB)

Product Details

Purpose:	CYP26A1 Rabbit pAb
Immunogen:	A synthetic peptide corresponding to a sequence within amino acids 50-150 of human CYP26A1 (NP_000774.2).
Sequence:	GFPFFGETLQ MVLQRRKFLQ MKRRKYGFYI KTHLFGRP TV RVMGADNVRR ILLGEHRLVS VHWPASVRTI LGSGCLSNLH DSSHKQRKKV IMRAFSREAL E
Isotype:	IgG
Cross-Reactivity:	Human, Mouse
Characteristics:	Polyclonal Antibodies
Purification:	Affinity purification

## Target Details

---

Target:	CYP26A1
Alternative Name:	CYP26A1 ( <a href="#">CYP26A1 Products</a> )
Background:	<p>This gene encodes a member of the cytochrome P450 superfamily of enzymes. The cytochrome P450 proteins are monooxygenases which catalyze many reactions involved in drug metabolism and synthesis of cholesterol, steroids and other lipids. This endoplasmic reticulum protein acts on retinoids, including all-trans-retinoic acid (RA), with both 4-hydroxylation and 18-hydroxylation activities. This enzyme regulates the cellular level of retinoic acid which is involved in regulation of gene expression in both embryonic and adult tissues. Two alternatively spliced transcript variants of this gene, which encode the distinct isoforms, have been reported.,CYP26A1,CP26,CYP26,P450RAI,P450RAI1,Signal Transduction,Endocrine &amp; Metabolism,Mitochondrial metabolism,Cytochromes,Lipid Metabolism,Cytochromes,Lipases,Cardiovascular,Lipids,CYP26A1</p>
Molecular Weight:	48kDa/56kDa
Gene ID:	1592
UniProt:	<a href="#">O43174</a>
Pathways:	<a href="#">Retinoic Acid Receptor Signaling Pathway</a> , <a href="#">Monocarboxylic Acid Catabolic Process</a>

## Application Details

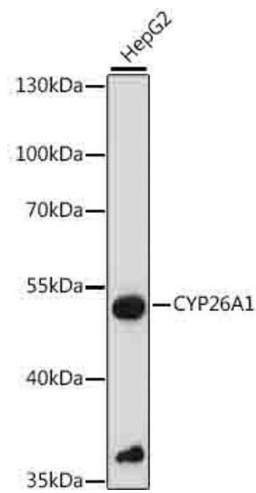
---

Application Notes:	WB,1:500 - 1:2000
Restrictions:	For Research Use only

## Handling

---

Format:	Liquid
Buffer:	PBS with 0.02 % sodium azide,50 % glycerol, pH 7.3.
Preservative:	Sodium azide
Precaution of Use:	This product contains Sodium azide: a POISONOUS AND HAZARDOUS SUBSTANCE which should be handled by trained staff only.
Storage:	-20 °C
Storage Comment:	Store at -20°C. Avoid freeze / thaw cycles.



### Western Blotting

**Image 1.** Western blot analysis of extracts of HepG2 cells, using CYP26 antibody (6259) at 1:1000 dilution. Secondary antibody: HRP Goat Anti-Rabbit IgG (H+L) (ABIN1684268 and ABIN3020597) at 1:10000 dilution. Lysates/proteins: 25 µg per lane. Blocking buffer: 3% nonfat dry milk in TBST. Detection: ECL Basic Kit (RM00020). Exposure time: 3s.