



[Go to Product page](#)

Datasheet for ABIN7266662
anti-Cytohesin 4 antibody (AA 1-70)

1 Image

Overview

Quantity:	100 µL
Target:	Cytohesin 4 (CYTH4)
Binding Specificity:	AA 1-70
Reactivity:	Human
Host:	Rabbit
Clonality:	Polyclonal
Conjugate:	This Cytohesin 4 antibody is un-conjugated
Application:	Western Blotting (WB)

Product Details

Purpose:	CYTH4 Rabbit pAb
Immunogen:	Recombinant fusion protein containing a sequence corresponding to amino acids 1-70 of human CYTH4 (NP_037517.1).
Sequence:	MDLCHPEPAE LSSGETEELQ RIKWHRKQLL EDIQLKDEI ADVFAQIDCF ESAEESRMAQ KEKELCIGRK
Isotype:	IgG
Cross-Reactivity:	Mouse, Rat
Characteristics:	Polyclonal Antibodies
Purification:	Affinity purification

Target Details

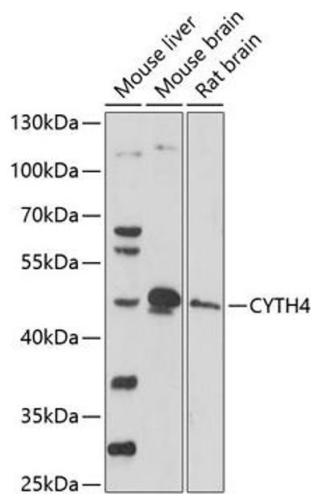
Target:	Cytohesin 4 (CYTH4)
Alternative Name:	CYTH4 (CYTH4 Products)
Background:	<p>This gene encodes a member of the PSCD family of proteins, which have an N-terminal coiled-coil motif, a central Sec7 domain, and a C-terminal pleckstrin homology (PH) domain. The coiled-coil motif is involved in homodimerization, the Sec7 domain contains guanine-nucleotide exchange protein (GEP) activity, and the PH domain interacts with phospholipids and is responsible for association of PSCDs with membranes. Members of this family function as GEPs for ADP-ribosylation factors (ARFs), which are guanine nucleotide-binding proteins involved in vesicular trafficking pathways. This protein exhibits GEP activity in vitro with ARF1 and ARF5, but is inactive with ARF6. Alternatively spliced transcript variants have been found for this gene.,CYTH4,CYT4,DJ63G5.1,PSCD4,Signal Transduction,CYTH4</p>
Molecular Weight:	45kDa
Gene ID:	27128
UniProt:	Q9UIA0

Application Details

Application Notes:	WB,1:500 - 1:2000
Restrictions:	For Research Use only

Handling

Format:	Liquid
Buffer:	PBS with 0.02 % sodium azide,50 % glycerol, pH 7.3.
Preservative:	Sodium azide
Precaution of Use:	This product contains Sodium azide: a POISONOUS AND HAZARDOUS SUBSTANCE which should be handled by trained staff only.
Storage:	-20 °C
Storage Comment:	Store at -20°C. Avoid freeze / thaw cycles.



Western Blotting

Image 1. Western blot analysis of extracts of various cell lines, using CYTH4 antibody (ABIN7266662) at 1:1000 dilution. Secondary antibody: HRP Goat Anti-Rabbit IgG (H+L) (ABIN1684268 and ABIN3020597) at 1:10000 dilution. Lysates/proteins: 25 µg per lane. Blocking buffer: 3 % nonfat dry milk in TBST. Detection: ECL Basic Kit (RM00020). Exposure time: 90s.