



[Go to Product page](#)

Datasheet for ABIN7266668  
**anti-DBP antibody (AA 1-325)**

1 Image

Overview

Quantity:	100 µL
Target:	DBP
Binding Specificity:	AA 1-325
Reactivity:	Human
Host:	Rabbit
Clonality:	Polyclonal
Conjugate:	This DBP antibody is un-conjugated
Application:	Western Blotting (WB)

Product Details

Purpose:	DBP Rabbit pAb
Immunogen:	Recombinant fusion protein containing a sequence corresponding to amino acids 1-325 of human DBP (NP_001343.2).
Sequence:	MARPVSDRTP APLLLGGPAG TPPGGGALLG LRSLLQGTSK PKEPASCLLK EKERKAALPA ATTPGPGLET AGPADAPAGA VVGGGSPRGR PGPVPAPGLL AP LLWERTLP FGDVEYVDLD AFLLEHGLPP SPPPPGGPSP EPSPARTPAP SPGPGSCGSA SPRSSPGHAP ARAALGTASG HRAGLTSRDT PSPVDPDVE VLMTFEPDPA DLALSSIPGH ETFDPRRHRF SEEELKPQPI MKKARKIQVP EEQKDEKYWS RRYKNNEAAK RSRDARRLKE NQISVRAAFL EKENALLRQE VVAVRQELSH YRAVLSRYQA QHGAL
Isotype:	IgG
Cross-Reactivity:	Human

## Product Details

---

Characteristics: Polyclonal Antibodies

Purification: Affinity purification

## Target Details

---

Target: DBP

Alternative Name: DBP ([DBP Products](#))

Background: The protein encoded by this gene is a member of the PAR bZIP transcription factor family and binds to specific sequences in the promoters of several genes, such as albumin, CYP2A4, and CYP2A5. The encoded protein can bind DNA as a homo- or heterodimer and is involved in the regulation of some circadian rhythm genes.,DBP,DABP,Epigenetics & Nuclear Signaling,Transcription Factors,DBP

Molecular Weight: 34kDa

Gene ID: 1628

UniProt: [Q10586](#)

## Application Details

---

Application Notes: WB,1:200 - 1:2000

Restrictions: For Research Use only

## Handling

---

Format: Liquid

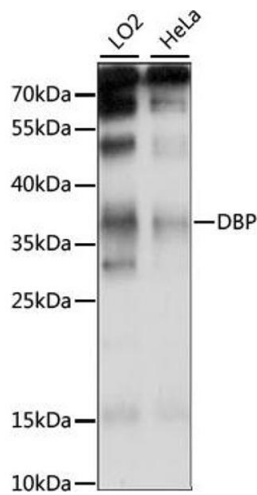
Buffer: PBS with 0.02 % sodium azide,50 % glycerol, pH 7.3.

Preservative: Sodium azide

Precaution of Use: This product contains Sodium azide: a POISONOUS AND HAZARDOUS SUBSTANCE which should be handled by trained staff only.

Storage: -20 °C

Storage Comment: Store at -20°C. Avoid freeze / thaw cycles.



### Western Blotting

**Image 1.** Western blot analysis of extracts of various cell lines, using DBP antibody (ABIN7266668) at 1:1000 dilution. Secondary antibody: HRP Goat Anti-Rabbit IgG (H+L) (ABIN1684268 and ABIN3020597) at 1:10000 dilution. Lysates/proteins: 25 µg per lane. Blocking buffer: 3 % nonfat dry milk in TBST. Detection: ECL Basic Kit (RM00020). Exposure time: 15S.