



[Go to Product page](#)

Datasheet for ABIN7266703

## anti-DDX6 antibody

### 3 Images

#### Overview

Quantity:	100 µL
Target:	DDX6
Reactivity:	Human
Host:	Rabbit
Clonality:	Monoclonal
Conjugate:	This DDX6 antibody is un-conjugated
Application:	Western Blotting (WB), Immunofluorescence (IF)

#### Product Details

Purpose:	DDX6 Rabbit mAb
Immunogen:	A synthesized peptide derived from human DDX6
Isotype:	IgG
Cross-Reactivity:	Human, Mouse, Rat
Characteristics:	Monoclonal Antibodies
Purification:	Affinity purification

#### Target Details

Target:	DDX6
Alternative Name:	DDX6 ( <a href="#">DDX6 Products</a> )
Background:	This gene encodes a member of the DEAD box protein family. The protein is an RNA helicase

## Target Details

---

found in P-bodies and stress granules, and functions in translation suppression and mRNA degradation. It is required for microRNA-induced gene silencing. Multiple alternatively spliced variants, encoding the same protein, have been identified. [provided by RefSeq, Mar 2012],HLR2, P54, RCK,Epigenetics & Nuclear Signaling,RNA Binding,DDX6

---

Molecular Weight: 54kDa

---

Gene ID: 1656

---

UniProt: [P26196](#)

---

Pathways: [Ribonucleoprotein Complex Subunit Organization](#)

## Application Details

---

---

Application Notes: WB,1:500 - 1:2000,IF,1:50 - 1:200

---

Restrictions: For Research Use only

## Handling

---

---

Format: Liquid

---

Buffer: PBS with 0.02 % sodium azide,0.05 % BSA,50 % glycerol, pH 7.3.

---

Preservative: Sodium azide

---

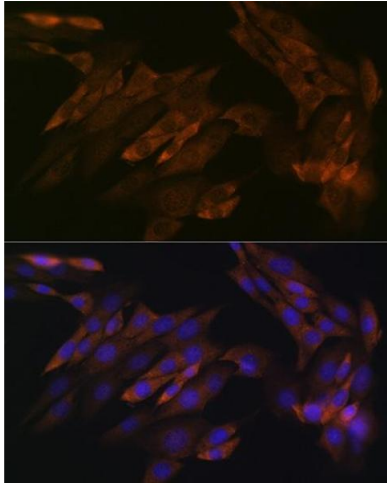
Precaution of Use: This product contains Sodium azide: a POISONOUS AND HAZARDOUS SUBSTANCE which should be handled by trained staff only.

---

Storage: -20 °C

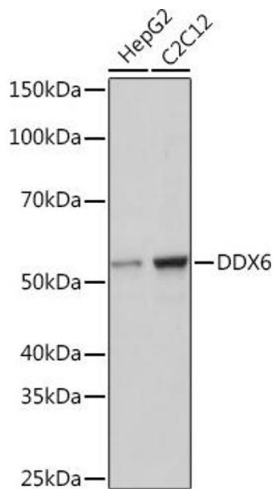
---

Storage Comment: Store at -20°C. Avoid freeze / thaw cycles.



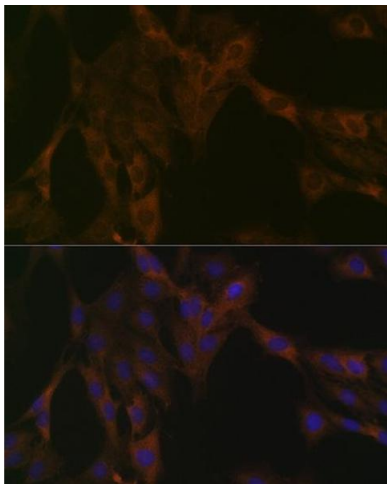
### Immunofluorescence

**Image 1.** Immunofluorescence analysis of NIH-3T3 cells using DDX6 Rabbit mAb (ABIN7266703) at dilution of 1:100 (40x lens). Blue: DAPI for nuclear staining.



### Western Blotting

**Image 2.** Western blot analysis of extracts of various cell lines, using DDX6 Rabbit mAb (ABIN7266703) at 1:1000 dilution. Secondary antibody: HRP Goat Anti-Rabbit IgG (H+L) (ABIN1684268 and ABIN3020597) at 1:10000 dilution. Lysates/proteins: 25 µg per lane. Blocking buffer: 3 % nonfat dry milk in TBST. Detection: ECL Basic Kit (RM00020). Exposure time: 1s.



### Immunofluorescence

**Image 3.** Immunofluorescence analysis of C6 cells using DDX6 Rabbit mAb (ABIN7266703) at dilution of 1:100 (40x lens). Blue: DAPI for nuclear staining.