



[Go to Product page](#)

Datasheet for ABIN7266726
anti-DLL1 antibody (AA 573-723)

3 Images

Overview

Quantity:	100 µL
Target:	DLL1
Binding Specificity:	AA 573-723
Reactivity:	Human
Host:	Rabbit
Clonality:	Polyclonal
Conjugate:	This DLL1 antibody is un-conjugated
Application:	Western Blotting (WB), Immunohistochemistry (IHC)

Product Details

Purpose:	DLL1 Rabbit pAb
Immunogen:	Recombinant fusion protein containing a sequence corresponding to amino acids 573-723 of human DLL1 (NP_005609.3).
Sequence:	LQKHRPPADP CRGETETMNN LANCQREKDI SVSIIGATQI KNTNKKADFH GDHSADKNGF KARYPAVDYN LVQDLKGDDT AVRDAHskRD TKCQPQGSSG EEKGTPTTLR GGEASERKRP DSGCSTSKDT KYQSVYVISE EKDECVIATE V
Isotype:	IgG
Cross-Reactivity:	Human, Mouse, Rat
Characteristics:	Polyclonal Antibodies
Purification:	Affinity purification

Target Details

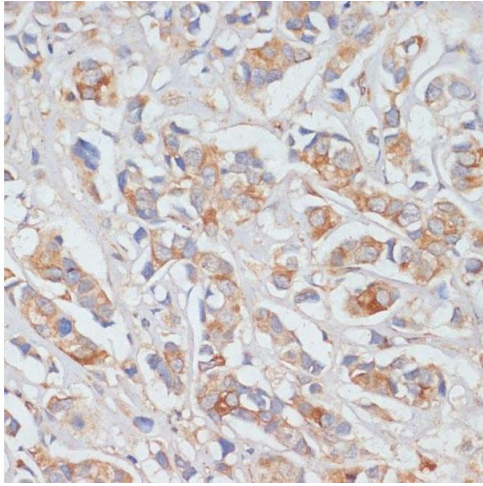
Target:	DLL1
Alternative Name:	DLL1 (DLL1 Products)
Background:	DLL1 is a human homolog of the Notch Delta ligand and is a member of the delta/serrate/jagged family. It plays a role in mediating cell fate decisions during hematopoiesis. It may play a role in cell-to-cell communication.,DLL1,DELTA1,DL1,Delta,Epigenetics & Nuclear Signaling,Signal Transduction,Cell Biology & Developmental Biology,Notch Signaling Pathway,Neuroscience,Stem Cells,Embryonic Stem Cells,Hematopoietic Progenitors,DLL1
Molecular Weight:	27kDa/78kDa
Gene ID:	28514
UniProt:	O00548
Pathways:	Notch Signaling , Stem Cell Maintenance

Application Details

Application Notes:	WB,1:500 - 1:2000,IHC,1:50 - 1:200
Restrictions:	For Research Use only

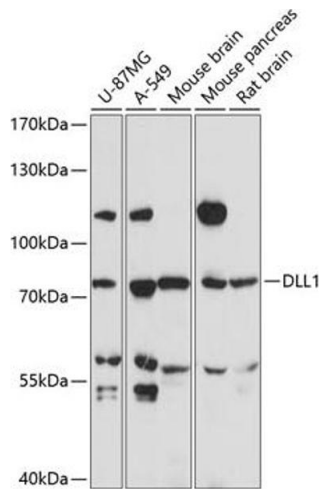
Handling

Format:	Liquid
Buffer:	PBS with 0.02 % sodium azide,50 % glycerol, pH 7.3.
Preservative:	Sodium azide
Precaution of Use:	This product contains Sodium azide: a POISONOUS AND HAZARDOUS SUBSTANCE which should be handled by trained staff only.
Storage:	-20 °C
Storage Comment:	Store at -20°C. Avoid freeze / thaw cycles.



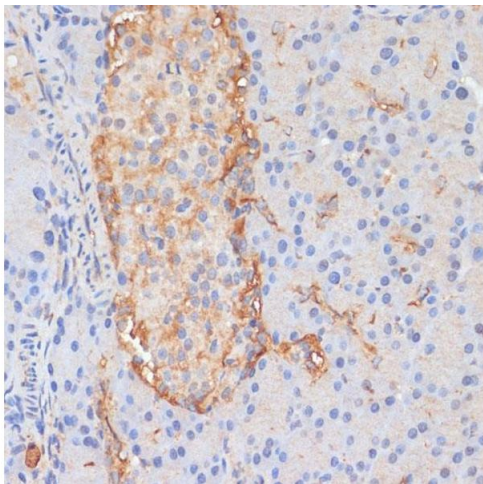
Immunohistochemistry

Image 1. Immunohistochemistry of paraffin-embedded human breast cancer using DLL1 antibody (ABIN7266726) at dilution of 1:100 (40x lens). Perform microwave antigen retrieval with 10 mM PBS buffer pH 7.2 before commencing with IHC staining protocol.



Western Blotting

Image 2. Western blot analysis of extracts of various cell lines, using DLL1 antibody (ABIN7266726) at 1:3000 dilution. Secondary antibody: HRP Goat Anti-Rabbit IgG (H+L) (ABIN1684268 and ABIN3020597) at 1:10000 dilution. Lysates/proteins: 25 µg per lane. Blocking buffer: 3 % nonfat dry milk in TBST. Detection: ECL Basic Kit (RM00020). Exposure time: 30s.



Immunohistochemistry

Image 3. Immunohistochemistry of paraffin-embedded rat pancreas using DLL1 antibody (ABIN7266726) at dilution of 1:100 (40x lens). Perform microwave antigen retrieval with 10 mM PBS buffer pH 7.2 before commencing with IHC staining protocol.