

Datasheet for ABIN7266746  
**anti-DRG2 antibody (AA 150-260)**

## 3 Images

[Go to Product page](#)

## Overview

Quantity:	100 µL
Target:	DRG2
Binding Specificity:	AA 150-260
Reactivity:	Human
Host:	Rabbit
Clonality:	Polyclonal
Conjugate:	This DRG2 antibody is un-conjugated
Application:	Western Blotting (WB), Immunofluorescence (IF)

## Product Details

Purpose:	DRG2 Rabbit pAb
Immunogen:	Recombinant fusion protein containing a sequence corresponding to amino acids 150-260 of human DRG2 (NP_001379.1).
Sequence:	TKGEVQRSLL EKELESVGIR LNKHKPNIYF KPKKGGGISF NSTVTLTQCS EKLVLILHE YKIFNAEVLV REDCSPDEFI DVIVGNRVYM PCLYVYNKID QISMEEVDRL A
Isotype:	IgG
Cross-Reactivity:	Human, Mouse, Rat
Characteristics:	Polyclonal Antibodies
Purification:	Affinity purification

## Target Details

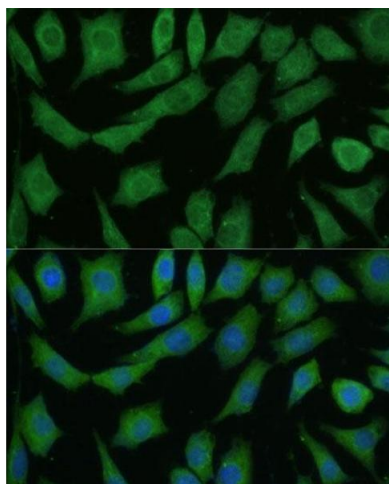
Target:	DRG2
Alternative Name:	DRG2 ( <a href="#">DRG2 Products</a> )
Background:	This gene encodes a GTP-binding protein known to function in the regulation of cell growth and differentiation. Read-through transcripts containing this gene and a downstream gene have been identified, but they are not thought to encode a fusion protein. This gene is located within the Smith-Magenis syndrome region on chromosome 17. [provided by RefSeq, Jan 2012],DRG2,Signal Transduction,G protein signaling,Signal Transduction,Cell Biology & Developmental Biology,Apoptosis,Cell Cycle,Cell differentiation,DRG2
Molecular Weight:	40kDa
Gene ID:	1819
UniProt:	<a href="#">P55039</a>

## Application Details

Application Notes:	WB,1:500 - 1:2000,IF,1:50 - 1:100
Restrictions:	For Research Use only

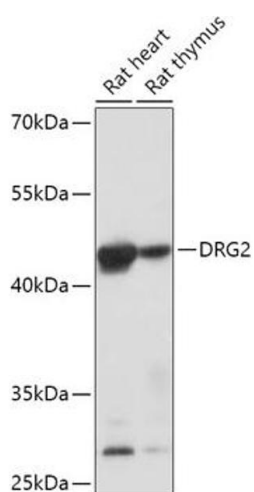
## Handling

Format:	Liquid
Buffer:	PBS with 0.02 % sodium azide,50 % glycerol, pH 7.3.
Preservative:	Sodium azide
Precaution of Use:	This product contains Sodium azide: a POISONOUS AND HAZARDOUS SUBSTANCE which should be handled by trained staff only.
Storage:	-20 °C
Storage Comment:	Store at -20°C. Avoid freeze / thaw cycles.



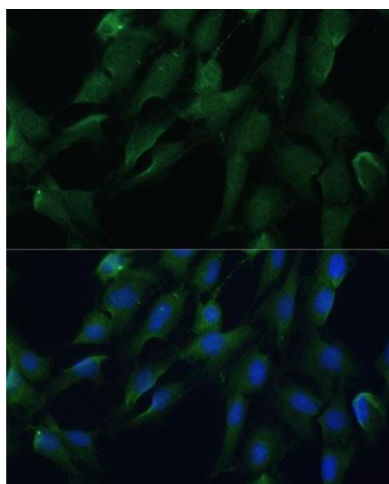
#### Immunofluorescence

**Image 1.** Immunofluorescence analysis of L929 cells using DRG2 antibody (ABIN7266746) at dilution of 1:100. Blue: DAPI for nuclear staining.



#### Western Blotting

**Image 2.** Western blot analysis of extracts of various cell lines, using DRG2 antibody (ABIN7266746) at 1:1000 dilution. Secondary antibody: HRP Goat Anti-Rabbit IgG (H+L) (ABIN1684268 and ABIN3020597) at 1:10000 dilution. Lysates/proteins: 25 µg per lane. Blocking buffer: 3 % nonfat dry milk in TBST. Detection: ECL Basic Kit (RM00020). Exposure time: 60s.



#### Immunofluorescence

**Image 3.** Immunofluorescence analysis of C6 cells using DRG2 antibody (ABIN7266746) at dilution of 1:100. Blue: DAPI for nuclear staining.