

Datasheet for ABIN7266770  
**anti-DPYSL2 antibody**

## 4 Images

[Go to Product page](#)

## Overview

Quantity:	100 µL
Target:	DPYSL2
Reactivity:	Human
Host:	Rabbit
Clonality:	Monoclonal
Conjugate:	This DPYSL2 antibody is un-conjugated
Application:	Western Blotting (WB), Immunofluorescence (IF)

## Product Details

Purpose:	CRMP2/DPYSL2 Rabbit mAb
Immunogen:	A synthesized peptide derived from human CRMP2/DPYSL2
Isotype:	IgG
Cross-Reactivity:	Human, Mouse, Rat
Characteristics:	Monoclonal Antibodies
Purification:	Affinity purification

## Target Details

Target:	DPYSL2
Alternative Name:	DPYSL2 ( <a href="#">DPYSL2 Products</a> )
Background:	This gene encodes a member of the collapsin response mediator protein family. Collapsin

## Target Details

response mediator proteins form homo- and hetero-tetramers and facilitate neuron guidance, growth and polarity. The encoded protein promotes microtubule assembly and is required for Sema3A-mediated growth cone collapse, and also plays a role in synaptic signaling through interactions with calcium channels. This gene has been implicated in multiple neurological disorders, and hyperphosphorylation of the encoded protein may play a key role in the development of Alzheimer's disease. Alternatively spliced transcript variants encoding multiple isoforms have been observed for this gene. [provided by RefSeq, Sep 2011],CRMP-2, CRMP2, DHPRP2, DRP-2, DRP2, N2A3, ULIP-2, ULIP2,Cell Biology & Developmental Biology,Cytoskeleton\_Microtubules,Neurodegenerative Diseases,Neurodegenerative Diseases\_Amyloid Plaque and Neurofibrillary Tangle Formation in Alzheimers Disease,Neuroscience,Protein phosphorylation,DPYSL2

Molecular Weight: 62kDa

Gene ID: 1808

UniProt: [Q16555](#)

Pathways: [Regulation of Cell Size](#)

## Application Details

Application Notes: WB,1:500 - 1:2000,IF,1:50 - 1:200

Restrictions: For Research Use only

## Handling

Format: Liquid

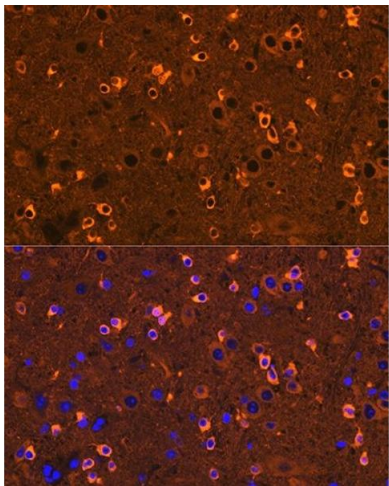
Buffer: PBS with 0.02 % sodium azide,0.05 % BSA,50 % glycerol, pH 7.3.

Preservative: Sodium azide

Precaution of Use: This product contains Sodium azide: a POISONOUS AND HAZARDOUS SUBSTANCE which should be handled by trained staff only.

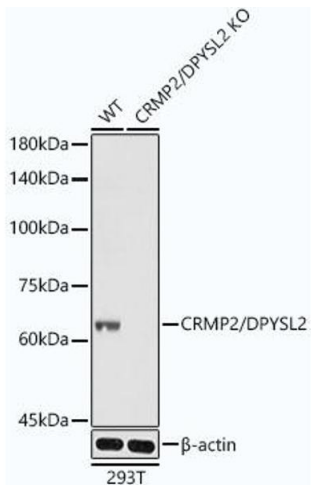
Storage: -20 °C

Storage Comment: Store at -20°C. Avoid freeze / thaw cycles.



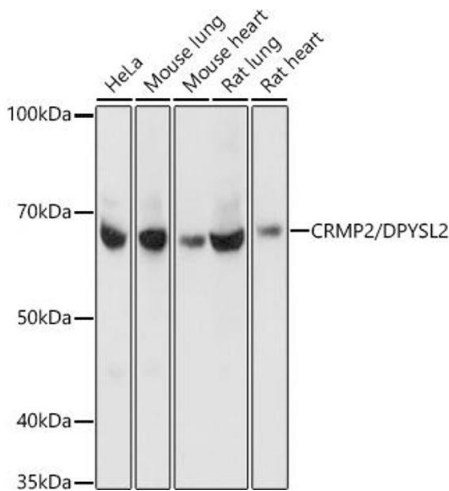
Immunofluorescence

**Image 1.** Immunofluorescence analysis of mouse brain using CRMP2/DPYSL2 Rabbit mAb at dilution of 1:100 (40x lens). Blue: DAPI for nuclear staining.



Western Blotting

**Image 2.** Western blot analysis of extracts from wild type(WT) and CRMP2/DPYSL2 knockout (KO) HeLa cells, using CRMP2/DPYSL2 antibody at 1:3000 dilution.Secondary antibody: HRP Goat Anti-Rabbit IgG (H+L) (ABIN1684268 and ABIN3020597) at 1:10000 dilution.Lysates/proteins: 25 µg per lane.Blocking buffer: 3 % nonfat dry milk in TBST.Detection: ECL Basic Kit (RM00020).Exposure time: 1s.



Western Blotting

**Image 3.** Western blot analysis of extracts of various cell lines, using CRMP2/DPYSL2 Rabbit mAb at 1:1000 dilution.Secondary antibody: HRP Goat Anti-Rabbit IgG (H+L) (ABIN1684268 and ABIN3020597) at 1:10000 dilution.Lysates/proteins: 25 µg per lane.Blocking buffer: 3 % nonfat dry milk in TBST.Detection: ECL Basic Kit (RM00020).Exposure time: 3s.

Please check the [product details page](#) for more images. Overall 4 images are available for ABIN7266770.