

Datasheet for ABIN7266774

**anti-DPYSL5 antibody****3** Images[Go to Product page](#)

## Overview

Quantity:	100 µL
Target:	DPYSL5
Reactivity:	Human
Host:	Rabbit
Clonality:	Monoclonal
Conjugate:	This DPYSL5 antibody is un-conjugated
Application:	Western Blotting (WB), Immunohistochemistry (IHC)

## Product Details

Purpose:	CRMP5/DPYSL5 Rabbit mAb
Immunogen:	A synthesized peptide derived from human CRMP5/DPYSL5
Isotype:	IgG
Cross-Reactivity:	Human, Mouse, Rat
Characteristics:	Monoclonal Antibodies
Purification:	Affinity purification

## Target Details

Target:	DPYSL5
Alternative Name:	DPYSL5 ( <a href="#">DPYSL5 Products</a> )
Background:	This gene encodes a member of the CRMP (collapsing response mediator protein) family

## Target Details

thought to be involved in neural development. Antibodies to the encoded protein were found in some patients with neurologic symptoms who had paraneoplastic syndrome. A pseudogene of this gene is found on chromosome 11. Multiple alternatively spliced variants, encoding the same protein, have been identified. [provided by RefSeq, Dec 2011],CRAM, CRMP-5, CRMP5, Ulip6,Cell Type Marker,Cell Type Marker\_Growth Cone,Cell Type Marker\_Neuron marker,Neurodegenerative Diseases,Neuroscience,DPYSL5

Molecular Weight: 61kDa

Gene ID: 56896

UniProt: [Q9BPU6](#)

## Application Details

Application Notes: WB,1:500 - 1:2000,IHC,1:50 - 1:200

Restrictions: For Research Use only

## Handling

Format: Liquid

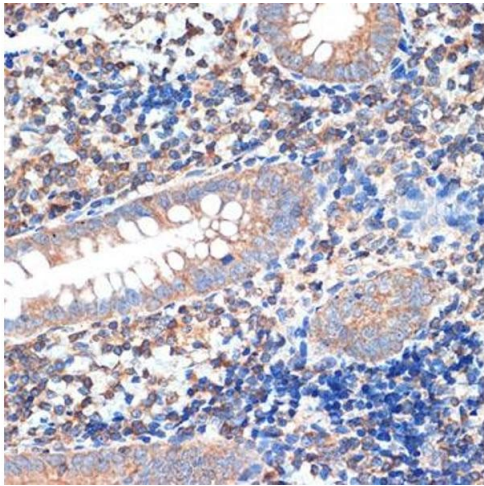
Buffer: PBS with 0.02 % sodium azide,0.05 % BSA,50 % glycerol, pH 7.3.

Preservative: Sodium azide

Precaution of Use: This product contains Sodium azide: a POISONOUS AND HAZARDOUS SUBSTANCE which should be handled by trained staff only.

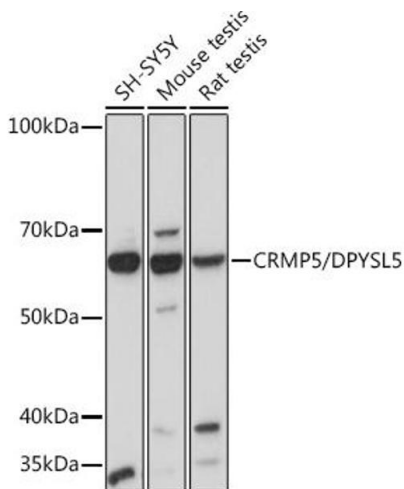
Storage: -20 °C

Storage Comment: Store at -20°C. Avoid freeze / thaw cycles.



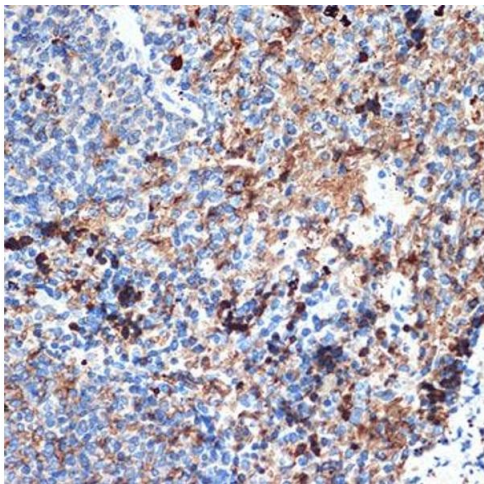
### Immunohistochemistry

**Image 1.** Immunohistochemistry of paraffin-embedded human appendix using CRMP5/DPYSL5 Rabbit mAb (ABIN7266774) at dilution of 1:100 (40x lens). Perform microwave antigen retrieval with 10 mM Tris/EDTA buffer pH 9.0 before commencing with IHC staining protocol.



### Western Blotting

**Image 2.** Western blot analysis of extracts of various cell lines, using CRMP5/DPYSL5 Rabbit mAb (ABIN7266774) at 1:1000 dilution. Secondary antibody: HRP Goat Anti-Rabbit IgG (H+L) (ABIN1684268 and ABIN3020597) at 1:10000 dilution. Lysates/proteins: 25 µg per lane. Blocking buffer: 3 % nonfat dry milk in TBST. Detection: ECL Basic Kit (RM00020). Exposure time: 10s.



### Immunohistochemistry

**Image 3.** Immunohistochemistry of paraffin-embedded rat spleen using CRMP5/DPYSL5 Rabbit mAb (ABIN7266774) at dilution of 1:100 (40x lens). Perform microwave antigen retrieval with 10 mM Tris/EDTA buffer pH 9.0 before commencing with IHC staining protocol.