

Datasheet for ABIN7266782

**anti-DPP3 antibody****2** Images[Go to Product page](#)

## Overview

Quantity:	100 µL
Target:	DPP3
Reactivity:	Human
Host:	Rabbit
Clonality:	Monoclonal
Conjugate:	This DPP3 antibody is un-conjugated
Application:	Western Blotting (WB)

## Product Details

Purpose:	DPP3 Rabbit mAb
Immunogen:	A synthesized peptide derived from human DPP3.
Isotype:	IgG
Cross-Reactivity:	Human, Mouse, Rat
Characteristics:	Monoclonal Antibodies
Purification:	Affinity purification

## Target Details

Target:	DPP3
Alternative Name:	DPP3 ( <a href="#">DPP3 Products</a> )
Background:	This gene encodes a protein that is a member of the M49 family of metallopeptidases. This

## Target Details

cytoplasmic protein binds a single zinc ion with its zinc-binding motif (HELLGH) and has post-proline dipeptidyl aminopeptidase activity, cleaving Xaa-Pro dipeptides from the N-termini of proteins. Increased activity of this protein is associated with endometrial and ovarian cancers. Alternatively spliced transcript variants have been found for this gene.,DPP3, DPPIII, dipeptidyl peptidase 3,Cell Biology & Developmental Biology,Ubiquitin,DPP3

Molecular Weight: 83kDa

Gene ID: 10072

UniProt: [Q9NY33](#)

## Application Details

Application Notes: WB,1:500 - 1:2000

Restrictions: For Research Use only

## Handling

Format: Liquid

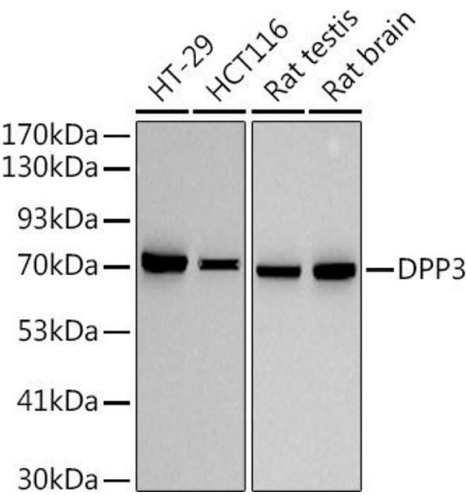
Buffer: PBS with 0.02 % sodium azide,50 % glycerol, pH 7.3.

Preservative: Sodium azide

Precaution of Use: This product contains Sodium azide: a POISONOUS AND HAZARDOUS SUBSTANCE which should be handled by trained staff only.

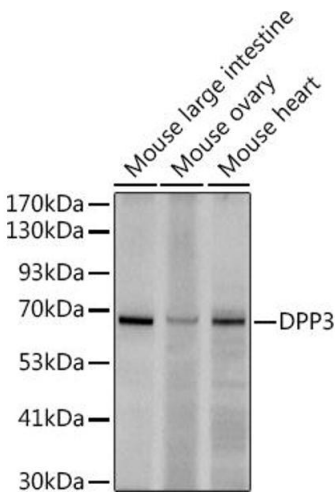
Storage: -20 °C

Storage Comment: Store at -20°C. Avoid freeze / thaw cycles.



#### Western Blotting

**Image 1.** Western blot analysis of extracts of various cell lines, using (ABIN7266782) at 1:500 dilution. Secondary antibody: HRP Goat Anti-Rabbit IgG (H+L) (ABIN1684268 and ABIN3020597) at 1:10000 dilution. Lysates/proteins: 25 µg per lane. Blocking buffer: 3% nonfat dry milk in TBST. Detection: ECL Basic Kit (RM00020). Exposure time: 30s.



#### Western Blotting

**Image 2.** Western blot analysis of extracts of various cell lines, using (ABIN7266782) at 1:500 dilution. Secondary antibody: HRP Goat Anti-Rabbit IgG (H+L) (ABIN1684268 and ABIN3020597) at 1:10000 dilution. Lysates/proteins: 25 µg per lane. Blocking buffer: 3% nonfat dry milk in TBST. Detection: ECL Enhanced Kit (RM00021). Exposure time: 180s.