

Datasheet for ABIN7266798 anti-DISP1 antibody (AA 1325-1524)



[Go to Product page](#)

1 Image

Overview

Quantity:	100 µL
Target:	DISP1
Binding Specificity:	AA 1325-1524
Reactivity:	Human
Host:	Rabbit
Clonality:	Polyclonal
Conjugate:	This DISP1 antibody is un-conjugated
Application:	Western Blotting (WB)

Product Details

Purpose:	DISP1 Rabbit pAb
Immunogen:	Recombinant fusion protein containing a sequence corresponding to amino acids 1325-1524 of human DISP1 (NP_116279.2).
Sequence:	FVHPITHIHH CPCLQGRVKP AGMQNSLPRN FFLHPVQHIQ AQEKIGKTNV HSLQRSIEEH LPKMAEPSSF VCRSTGSLK TCCDPENKQR ELCKNRDVSN LESSGGTENK AGGKVELSLS QTDASVNSEH FNQNEPKVLF NHLMGEAGCR SCPNNSQSCG RIVRVKCNVS DCQMPNMEAN VPAVLTHSEL SGESLLIKTL
Isotype:	IgG
Cross-Reactivity:	Human
Characteristics:	Polyclonal Antibodies

Product Details

Purification: Affinity purification

Target Details

Target: DISP1

Alternative Name: DISP1 ([DISP1 Products](#))

Background: The pattern of cellular proliferation and differentiation that leads to normal development of embryonic structures often depends upon the localized production of secreted protein signals. Cells surrounding the source of a particular signal respond in a graded manner according to the effective concentration of the signal, and this response produces the pattern of cell types constituting the mature structure. A novel segment-polarity gene known as dispatched has been identified in Drosophila and its protein product is required for normal Hedgehog (Hh) signaling. This gene is one of two human homologs of Drosophila dispatched and, based on sequence identity to its mouse counterpart, the encoded protein may play an essential role in Hh patterning activities in the early embryo.,DISP1,DISPA,Signal Transduction,Neuroscience,DISP1

Molecular Weight: 170kDa

Gene ID: 84976

UniProt: [Q96F81](#)

Pathways: [Hedgehog Signaling](#)

Application Details

Application Notes: WB,1:500 - 1:2000

Restrictions: For Research Use only

Handling

Format: Liquid

Buffer: PBS with 0.02 % sodium azide,50 % glycerol, pH 7.3.

Preservative: Sodium azide

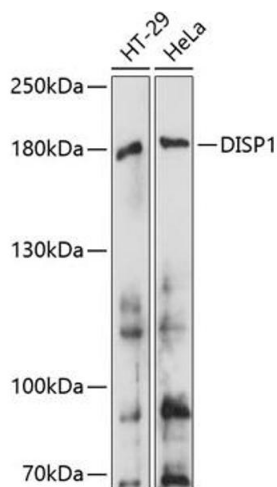
Precaution of Use: This product contains Sodium azide: a POISONOUS AND HAZARDOUS SUBSTANCE which should be handled by trained staff only.

Storage: -20 °C

Handling

Storage Comment: Store at -20°C. Avoid freeze / thaw cycles.

Images



Western Blotting

Image 1. Western blot analysis of extracts of various cell lines, using DISP1 antibody (ABIN7266798) at 1:1000 dilution. Secondary antibody: HRP Goat Anti-Rabbit IgG (H+L) (ABIN1684268 and ABIN3020597) at 1:10000 dilution. Lysates/proteins: 25 µg per lane. Blocking buffer: 3 % nonfat dry milk in TBST. Detection: ECL Basic Kit (RM00020). Exposure time: 30s.