

Datasheet for ABIN7266799

**anti-DISC1 antibody**

5 Images

[Go to Product page](#)

## Overview

Quantity:	100 µL
Target:	DISC1
Reactivity:	Human
Host:	Rabbit
Clonality:	Monoclonal
Conjugate:	This DISC1 antibody is un-conjugated
Application:	Western Blotting (WB), Immunofluorescence (IF)

## Product Details

Purpose:	DISC1 Rabbit mAb
Immunogen:	A synthesized peptide derived from human DISC1
Isotype:	IgG
Cross-Reactivity:	Human, Mouse, Rat
Characteristics:	Monoclonal Antibodies
Purification:	Affinity purification

## Target Details

Target:	DISC1
Alternative Name:	DISC1 ( <a href="#">DISC1 Products</a> )
Background:	This gene encodes a protein with multiple coiled coil motifs which is located in the nucleus,

## Target Details

cytoplasm and mitochondria. The protein is involved in neurite outgrowth and cortical development through its interaction with other proteins. This gene is disrupted in a t(1,11)(q42.1,q14.3) translocation which segregates with schizophrenia and related psychiatric disorders in a large Scottish family. Alternate transcriptional splice variants, encoding different isoforms, have been characterized. [provided by RefSeq, Jul 2008],C1orf136, SCZD9,Cell Biology & Developmental Biology,Cell Cycle,Cell Cycle\_Centrosome,Epigenetics & Nuclear Signaling,Neurodegenerative Diseases,Neurodegenerative Diseases\_Amyloid Plaque and Neurofibrillary Tangle Formation in Alzheimers Disease,Neuroscience,DISC1

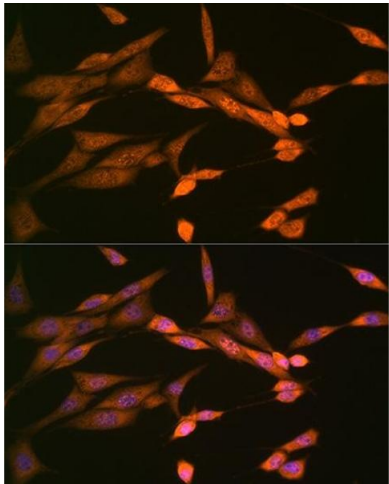
Molecular Weight:	100kDa
Gene ID:	27185
UniProt:	<a href="#">Q9NRI5</a>
Pathways:	<a href="#">Regulation of Cell Size</a>

## Application Details

Application Notes:	WB,1:500 - 1:2000,IF,1:50 - 1:200
Restrictions:	For Research Use only

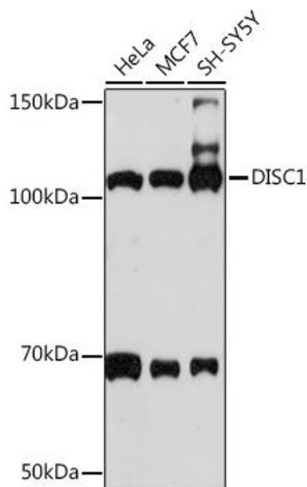
## Handling

Format:	Liquid
Buffer:	PBS with 0.02 % sodium azide,0.05 % BSA,50 % glycerol, pH 7.3.
Preservative:	Sodium azide
Precaution of Use:	This product contains Sodium azide: a POISONOUS AND HAZARDOUS SUBSTANCE which should be handled by trained staff only.
Storage:	-20 °C
Storage Comment:	Store at -20°C. Avoid freeze / thaw cycles.



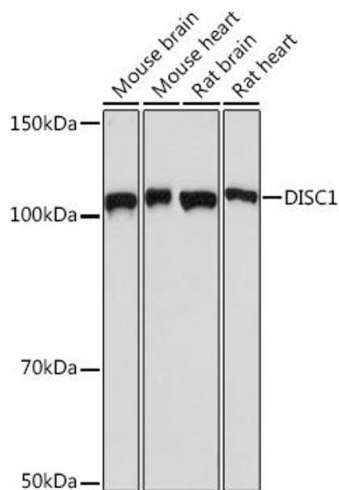
### Immunofluorescence

**Image 1.** Immunofluorescence analysis of NIH-3T3 cells using DISC1 Rabbit mAb (ABIN7266799) at dilution of 1:100 (40x lens). Blue: DAPI for nuclear staining.



### Western Blotting

**Image 2.** Western blot analysis of extracts of various cell lines, using DISC1 Rabbit mAb (ABIN7266799) at 1:1000 dilution. Secondary antibody: HRP Goat Anti-Rabbit IgG (H+L) (ABIN1684268 and ABIN3020597) at 1:10000 dilution. Lysates/proteins: 25 µg per lane. Blocking buffer: 3 % nonfat dry milk in TBST. Detection: ECL Basic Kit (RM00020). Exposure time: 10s.



### Western Blotting

**Image 3.** Western blot analysis of extracts of various cell lines, using DISC1 Rabbit mAb (ABIN7266799) at 1:1000 dilution. Secondary antibody: HRP Goat Anti-Rabbit IgG (H+L) (ABIN1684268 and ABIN3020597) at 1:10000 dilution. Lysates/proteins: 25 µg per lane. Blocking buffer: 3 % nonfat dry milk in TBST. Detection: ECL Basic Kit (RM00020). Exposure time: 30s.

Please check the [product details page](#) for more images. Overall 5 images are available for ABIN7266799.