



[Go to Product page](#)

Datasheet for ABIN726680
anti-PMP22 antibody (AA 101-160)

3 Images

Overview

Quantity:	100 µL
Target:	PMP22
Binding Specificity:	AA 101-160
Reactivity:	Rat, Mouse
Host:	Rabbit
Clonality:	Polyclonal
Conjugate:	This PMP22 antibody is un-conjugated
Application:	Western Blotting (WB), ELISA, Immunofluorescence (Cultured Cells) (IF (cc)), Immunofluorescence (Paraffin-embedded Sections) (IF (p)), Immunohistochemistry (Paraffin-embedded Sections) (IHC (p)), Immunohistochemistry (Frozen Sections) (IHC (fro))

Product Details

Immunogen:	KLH conjugated synthetic peptide derived from human PMP-22
Isotype:	IgG
Cross-Reactivity:	Mouse, Rat
Predicted Reactivity:	Human
Purification:	Purified by Protein A.

Target Details

Target:	PMP22
---------	-------

Target Details

Alternative Name: PMP22 ([PMP22 Products](#))

Background: Synonyms: DSS, HNPP, CMT1A, CMT1E, GAS-3, Sp110, HMSNIA, Peripheral myelin protein 22, PMP-22, Growth arrest-specific protein 3, PMP22, GAS3

Background: PMP22 is a 22 kDa glycoprotein expressed in the compact myelin of the peripheral nervous system. In the peripheral nervous system, PMP 22 is produced by myelinating Schwann cells and is coexpressed with the genes for myelin basic protein (MBP) during nerve development and regeneration. Alterations in the level of this protein cause several genetic human diseases. If the protein is duplicated, patients develop Charcot Marie Tooth disease. If one copy of the gene is deleted, they suffer from the inherited tendency to pressure palsies.

Gene ID: 5376

UniProt: [Q01453](#)

Application Details

Application Notes: WB 1:300-5000
ELISA 1:500-1000
IHC-P 1:200-400
IHC-F 1:100-500
IF(IHC-P) 1:50-200
IF(IHC-F) 1:50-200
IF(ICC) 1:50-200

Restrictions: For Research Use only

Handling

Format: Liquid

Concentration: 1 µg/µL

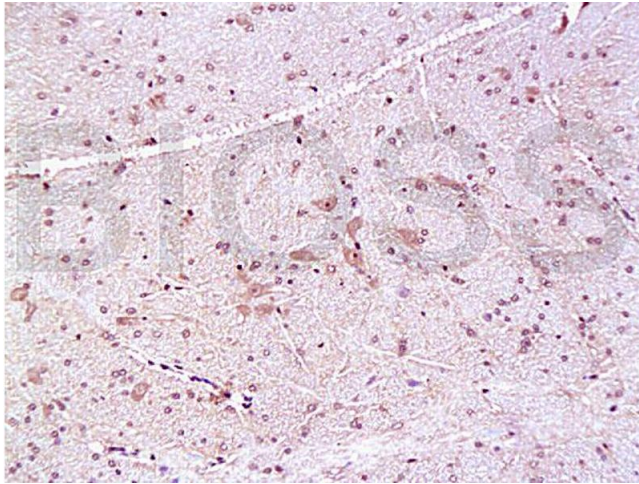
Buffer: 0.01M TBS(pH 7.4) with 1 % BSA, 0.02 % Proclin300 and 50 % Glycerol.

Preservative: ProClin

Precaution of Use: This product contains ProClin: a POISONOUS AND HAZARDOUS SUBSTANCE, which should be handled by trained staff only.

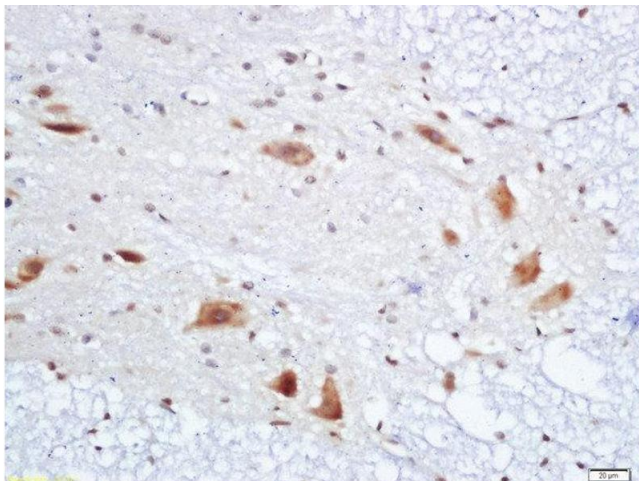
Storage: 4 °C,-20 °C

Storage Comment: Shipped at 4°C. Store at -20°C for one year. Avoid repeated freeze/thaw cycles.



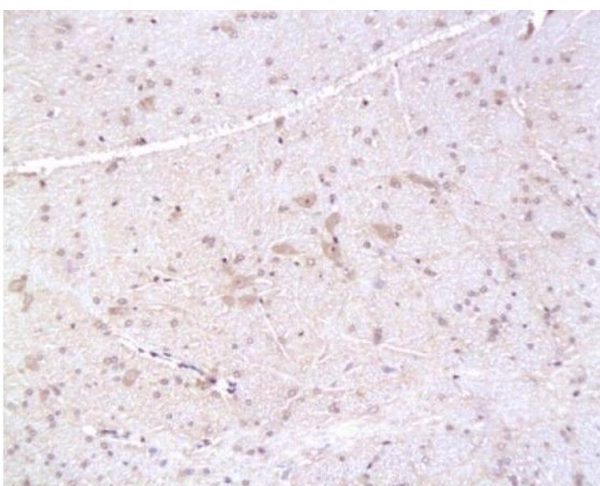
Immunohistochemistry

Image 1. Formalin-fixed and paraffin embedded: rat brain tissue labeled with Anti-PMP22 Polyclonal Antibody, Unconjugated (ABIN726680) at 1:200, followed by conjugation to the secondary antibody and DAB staining



Immunohistochemistry (Paraffin-embedded Sections)

Image 2. Formalin-fixed and paraffin embedded rat spinal cord labeled with Anti-PMP22 Polyclonal Antibody, Unconjugated at 1:200 followed by conjugation to the secondary antibody and DAB staining



Immunohistochemistry (Paraffin-embedded Sections)

Image 3. Formalin-fixed and paraffin embedded: rat brain tissue labeled with Anti-PMP22 Polyclonal Antibody, Unconjugated at 1:200, followed by conjugation to the secondary antibody and DAB staining