

Datasheet for ABIN7266800

anti-DLX3 antibody[Go to Product page](#)**1** Image

Overview

Quantity:	100 µL
Target:	DLX3
Reactivity:	Human
Host:	Rabbit
Clonality:	Monoclonal
Conjugate:	This DLX3 antibody is un-conjugated
Application:	Western Blotting (WB)

Product Details

Purpose:	DLX3 Rabbit mAb
Immunogen:	Recombinant protein of Human DLX3.
Isotype:	IgG
Cross-Reactivity:	Human, Mouse
Characteristics:	Monoclonal Antibodies
Purification:	Affinity purification

Target Details

Target:	DLX3
Alternative Name:	DLX3 (DLX3 Products)
Background:	Many vertebrate homeo box-containing genes have been identified on the basis of their

Target Details

sequence similarity with Drosophila developmental genes. Members of the Dlx gene family contain a homeobox that is related to that of Distal-less (Dll), a gene expressed in the head and limbs of the developing fruit fly. The Distal-less (Dlx) family of genes comprises at least 6 different members, DLX1-DLX6. Trichodontoosseous syndrome (TDO), an autosomal dominant condition, has been correlated with DLX3 gene mutation. This gene is located in a tail-to-tail configuration with another member of the gene family on the long arm of chromosome 17. Mutations in this gene have been associated with the autosomal dominant conditions trichodontoosseous syndrome and amelogenesis imperfecta with taurodontism.,DLX3,AI4,TDO,Epigenetics & Nuclear Signaling,Transcription Factors,DLX3

Molecular Weight: 31kDa

Gene ID: 1747

UniProt: [O60479](#)

Application Details

Application Notes: WB,1:500 - 1:2000

Restrictions: For Research Use only

Handling

Format: Liquid

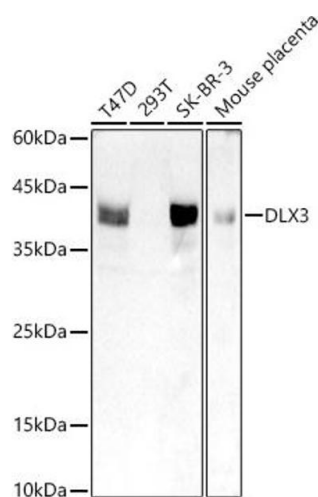
Buffer: PBS with 0.02 % sodium azide,0.05 % BSA,50 % glycerol, pH 7.3.

Preservative: Sodium azide

Precaution of Use: This product contains Sodium azide: a POISONOUS AND HAZARDOUS SUBSTANCE which should be handled by trained staff only.

Storage: -20 °C

Storage Comment: Store at -20°C. Avoid freeze / thaw cycles.



Western Blotting

Image 1. Western blot analysis of extracts of various cell lines, using DLX3 antibody (ABIN7266800) at 1:1000 dilution. Secondary antibody: HRP Goat Anti-Rabbit IgG (H+L) (ABIN1684268 and ABIN3020597) at 1:10000 dilution. Lysates/proteins: 25 µg per lane. Blocking buffer: 3 % nonfat dry milk in TBST. Detection: ECL Basic Kit (RM00020). Exposure time: 90s.