

Datasheet for ABIN7266834

anti-DRD3 antibody[Go to Product page](#)**1** Image

Overview

Quantity:	100 µL
Target:	DRD3
Reactivity:	Human
Host:	Rabbit
Clonality:	Monoclonal
Conjugate:	This DRD3 antibody is un-conjugated
Application:	Western Blotting (WB)

Product Details

Purpose:	Dopamine Receptor D3 (DRD3) Rabbit mAb
Immunogen:	A synthesized peptide derived from human Dopamine Receptor D3 (DRD3) (DRD3)
Isotype:	IgG
Cross-Reactivity:	Human, Mouse, Rat
Characteristics:	Monoclonal Antibodies
Purification:	Affinity purification

Target Details

Target:	DRD3
Alternative Name:	DRD3 (DRD3 Products)
Background:	This gene encodes the D3 subtype of the five (D1-D5) dopamine receptors. The activity of the

Target Details

D3 subtype receptor is mediated by G proteins which inhibit adenylyl cyclase. This receptor is localized to the limbic areas of the brain, which are associated with cognitive, emotional, and endocrine functions. Genetic variation in this gene may be associated with susceptibility to hereditary essential tremor 1. Alternative splicing of this gene results in transcript variants encoding different isoforms, although some variants may be subject to nonsense-mediated decay (NMD). [provided by RefSeq, Jul 2008],D3DR, ETM1, FET1,Neuroscience,DRD3

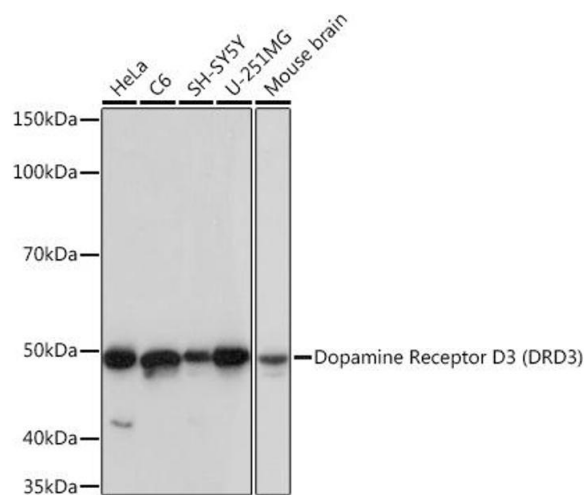
Molecular Weight:	44kDa
Gene ID:	1814
UniProt:	P35462
Pathways:	Regulation of Systemic Arterial Blood Pressure by Hormones , cAMP Metabolic Process , Regulation of G-Protein Coupled Receptor Protein Signaling , Proton Transport , Negative Regulation of Transporter Activity

Application Details

Application Notes:	WB,1:500 - 1:2000
Restrictions:	For Research Use only

Handling

Format:	Liquid
Buffer:	PBS with 0.02 % sodium azide,0.05 % BSA,50 % glycerol, pH 7.3.
Preservative:	Sodium azide
Precaution of Use:	This product contains Sodium azide: a POISONOUS AND HAZARDOUS SUBSTANCE which should be handled by trained staff only.
Storage:	-20 °C
Storage Comment:	Store at -20°C. Avoid freeze / thaw cycles.



Western Blotting

Image 1. Western blot analysis of extracts of various cell lines, using Dopamine Receptor D3 (DRD3) (DRD3) Rabbit mAb (ABIN7266834) at 1:1000 dilution. Secondary antibody: HRP Goat Anti-Rabbit IgG (H+L) (ABIN1684268 and ABIN3020597) at 1:10000 dilution. Lysates/proteins: 25 µg per lane. Blocking buffer: 3 % nonfat dry milk in TBST. Detection: ECL Basic Kit (RM00020). Exposure time: 3s.