

Datasheet for ABIN7266839
anti-Doublecortin antibody (AA 240-360)[Go to Product page](#)

2 Images

Overview

| | |
|----------------------|--|
| Quantity: | 100 µL |
| Target: | Doublecortin (DCX) |
| Binding Specificity: | AA 240-360 |
| Reactivity: | Human |
| Host: | Rabbit |
| Clonality: | Polyclonal |
| Conjugate: | This Doublecortin antibody is un-conjugated |
| Application: | Western Blotting (WB), Immunofluorescence (IF) |

Product Details

| | |
|-------------------|--|
| Purpose: | DCX Rabbit pAb |
| Immunogen: | Recombinant fusion protein containing a sequence corresponding to amino acids 240-360 of human DCX (NP_835364.1). |
| Sequence: | HDDFGDDDV F IACGPEKFRY AQDDFSLDEN ECRVMKGNPS ATAGPKASPT PQKTSKSPG PMRRSKSPAD SANGTSSSQL STPKSKQSPI STPTSPGSLR KHKDLYLPLS LDDSDSLGDS M |
| Isotype: | IgG |
| Cross-Reactivity: | Human, Mouse |
| Characteristics: | Polyclonal Antibodies |
| Purification: | Affinity purification |

Target Details

| | |
|-------------------|---|
| Target: | Doublecortin (DCX) |
| Alternative Name: | DCX (DCX Products) |
| Background: | <p>This gene encodes a member of the doublecortin family. The protein encoded by this gene is a cytoplasmic protein and contains two doublecortin domains, which bind microtubules. In the developing cortex, cortical neurons must migrate over long distances to reach the site of their final differentiation. The encoded protein appears to direct neuronal migration by regulating the organization and stability of microtubules. In addition, the encoded protein interacts with LIS1, the regulatory gamma subunit of platelet activating factor acetylhydrolase, and this interaction is important to proper microtubule function in the developing cortex. Mutations in this gene cause abnormal migration of neurons during development and disrupt the layering of the cortex, leading to epilepsy, mental retardation, subcortical band heterotopia ('double cortex' syndrome) in females and lissencephaly ('smooth brain' syndrome) in males. Multiple transcript variants encoding different isoforms have been found for this</p> <p>gene.,DBCN,DC,LISX,SCLH,XLIS,DCX,Cell Biology & Developmental Biology,Cell Cycle,Centrosome,Cell Adhesion,Microtubules,Neuroscience,Cell Type Marker,Neuron marker,Growth Cone,DCX</p> |
| Molecular Weight: | 40kDa |
| Gene ID: | 1641 |
| UniProt: | O43602 |

Application Details

| | |
|--------------------|-----------------------------------|
| Application Notes: | WB,1:500 - 1:2000,IF,1:50 - 1:200 |
| Restrictions: | For Research Use only |

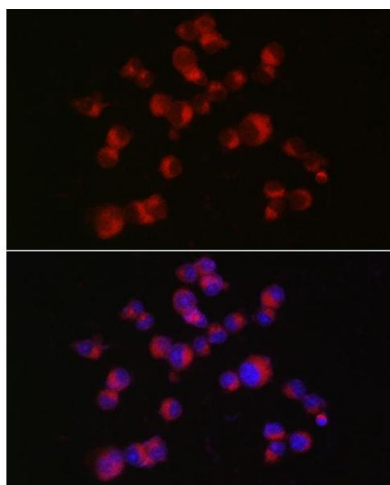
Handling

| | |
|--------------------|--|
| Format: | Liquid |
| Buffer: | PBS with 0.02 % sodium azide,50 % glycerol, pH 7.3. |
| Preservative: | Sodium azide |
| Precaution of Use: | This product contains Sodium azide: a POISONOUS AND HAZARDOUS SUBSTANCE which should be handled by trained staff only. |
| Storage: | -20 °C |

Handling

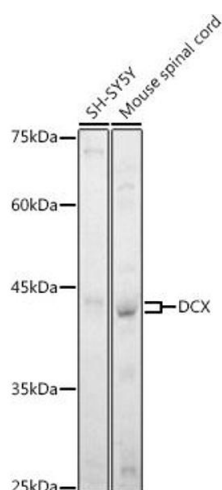
Storage Comment: Store at -20°C. Avoid freeze / thaw cycles.

Images



Immunofluorescence

Image 1. Immunofluorescence analysis of Neuro-2a cells using DCX Rabbit pAb (ABIN7266839) at dilution of 1:150 (40x lens). Blue: DAPI for nuclear staining.



Western Blotting

Image 2. Western blot analysis of extracts of various cell lines, using DCX antibody (ABIN7266839) at 1:1000 dilution. Secondary antibody: HRP Goat Anti-Rabbit IgG (H+L) (ABIN1684268 and ABIN3020597) at 1:10000 dilution. Lysates/proteins: 25 µg per lane. Blocking buffer: 3 % nonfat dry milk in TBST. Detection: ECL Enhanced Kit (RM00021). Exposure time: 180s.