

Datasheet for ABIN7266866
anti-DYNLRB1 antibody (AA 1-63)



[Go to Product page](#)

2 Images

Overview

Quantity:	100 µL
Target:	DYNLRB1
Binding Specificity:	AA 1-63
Reactivity:	Human
Host:	Rabbit
Clonality:	Polyclonal
Conjugate:	This DYNLRB1 antibody is un-conjugated
Application:	Western Blotting (WB), Immunohistochemistry (IHC)

Product Details

Purpose:	DYNLRB1 Rabbit pAb
Immunogen:	A synthetic peptide corresponding to a sequence within amino acids 1-63 of human DYNLRB1 (NP_001268656.1).
Sequence:	MDNPTTTQYA SLMHSFILKA RSTVRDIDPQ NDLTFLRIRS KKNEIMVAPD KDYFLIVIQN PTE
Isotype:	IgG
Cross-Reactivity:	Human, Mouse
Characteristics:	Polyclonal Antibodies
Purification:	Affinity purification

Target Details

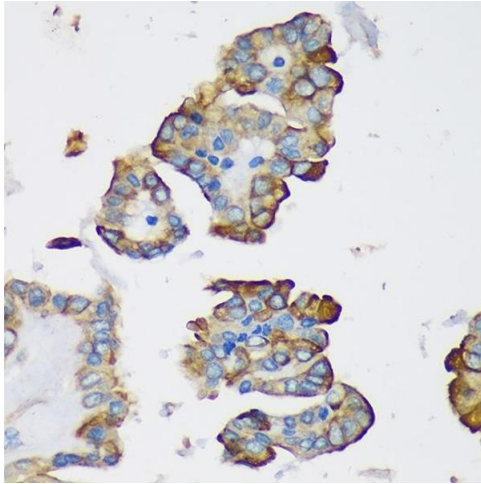
Target:	DYNLRB1
Alternative Name:	DYNLRB1 (DYNLRB1 Products)
Background:	<p>This gene is a member of the roadblock dynein light chain family. The encoded cytoplasmic protein is capable of binding intermediate chain proteins, interacts with transforming growth factor-beta, and has been implicated in the regulation of actin modulating proteins.</p> <p>Upregulation of this gene has been associated with hepatocellular carcinomas, suggesting that this gene may be involved in tumor progression. Alternative splicing results in multiple transcript variants. Pseudogenes of this gene have been defined on chromosomes 12 and 18.,DYNLRB1,BITH,BLP,DNCL2A,DNLC2A,ROBLD1,Cancer,Tumor biomarkers,Signal Transduction,Cell Biology & Developmental Biology,Cytoskeleton,Motor Proteins,DYNLRB1</p>
Molecular Weight:	5kDa/10kDa
Gene ID:	83658
UniProt:	Q9NP97

Application Details

Application Notes:	WB,1:500 - 1:2000,IHC,1:50 - 1:200
Restrictions:	For Research Use only

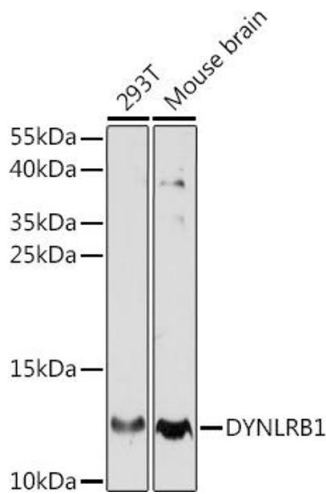
Handling

Format:	Liquid
Buffer:	PBS with 0.02 % sodium azide,50 % glycerol, pH 7.3.
Preservative:	Sodium azide
Precaution of Use:	This product contains Sodium azide: a POISONOUS AND HAZARDOUS SUBSTANCE which should be handled by trained staff only.
Storage:	-20 °C
Storage Comment:	Store at -20°C. Avoid freeze / thaw cycles.



Immunohistochemistry

Image 1. Immunohistochemistry of paraffin-embedded Human thyroid cancer using DYNLRB1 Rabbit pAb (ABIN7266866) at dilution of 1:100 (40x lens). Perform microwave antigen retrieval with 10 mM PBS buffer pH 7.2 before commencing with IHC staining protocol.



Western Blotting

Image 2. Western blot analysis of extracts of various cell lines, using DYNLRB1 antibody (ABIN7266866) at 1:770 dilution. Secondary antibody: HRP Goat Anti-Rabbit IgG (H+L) (ABIN1684268 and ABIN3020597) at 1:10000 dilution. Lysates/proteins: 25 µg per lane. Blocking buffer: 3 % nonfat dry milk in TBST. Detection: ECL Basic Kit (RM00020). Exposure time: 90s.